



SOLD

SOLD IN 1 HOME OPEN & RECORD AREA PRICE AGAIN BY NANCY BIRD

+++++ SOLD AGAIN IN FIRST HOME OPEN AND RECORD AREA PRICE BY NANCY BIRD - IF WOULD LIKE AN APPRIASAL ON YOUR PROPERTY CONTACT NANCY BIRD ON 041 555 8594

Nancy Bird is Proud to Present this Stylish "AS NEW" Beautifully Presented Executive Apartment with 2 Spacious Bedrooms, 1 large Bathroom, plus Big Balcony and Separate large Storage Room right next door for convenience, in a modern, well maintained Security Building with Intercom Access and Private Gated Security Carpark. Boasting, as one of the top floor apartments in the building, in the most sought after location in The City Of Cockburn, in a family orientated pristine suburb of Harvest Lakes, Atwell, with a huge bonus of less than 1 minutes walk to Aubin Grove Train Station, straight to Perth CBD and Harvest Lakes Shopping Complex with Woolworths Supermarket and a variety of shops, restaurants and cafes as well as easy freeway access. Close by to award winning Atwell and Aubin Grove Primary Schools, Atwell College and Gateway Shopping Precinct, viewing this impressive "Stylish Executive Apartment" will impress the fussiest of Buyers to nest or invest !

Presented beautifully "AS NEW" and vacant ready to move into ASAP to nest or invest, with brand new neutral décor ,new Paint, new "never used" quality plush Carpets with underlay, plus gorgeous big modern kitchen with modern stainless appliances included with the apartment is, an induction stove top and rangehood, double door fridge/freezer, dishwasher and microwave plus NBN connected - there's nothing to do just move in and enjoy!

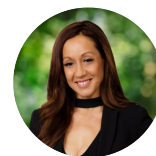
This stunning apartment spacious floorplan, boasts a large Open Plan Living with stylish large Kitchen with extra long Breakfast Bar, Lounge Area and Dining Area leading directly out to the big Balcony where you can relax and enjoy outdoor living space as well.

This spacious functional Kitchen size is usually found in houses, with an extra long and wide Island bench/ breakfast bar comfortably seating four, with under bench cupboards, large pantry, double sink with drainer, PLUS includes all the quality stainless steel appliances you need new dishwasher, double door fridge and microwave with plenty of over head storage cupboards, Induction Stove Top, Rangehood and Under Bench Oven, with this good sized Kitchen you can easily cook up a storm and entertain in your stunning apartment.

2 BED | 1 BATH | 1 CAR

PRICE:
\$480,000

OPEN FOR INSPECTION:
N/A



Nancy Bird
0415558594

nancybird@atrealty.com.au

www.atrealty.com.au



33/55 Flourish Loop, Atwell

TOTAL AREA - 82.8 SQM



PLAN IS APPROXIMATE AND REPRESENTATIONAL ONLY

Disclaimer: Please note this floor plan is for marketing purposes and is to be used as a guide only. All dimensions are estimates only and may not be exact measurements.