

335 HENRY STREET, DENILQUIN, NSW, 2710



**SOLD**

## RENOVATED CHARM & ELEGANCE

Introducing the Federation Renovated 4 Bedroom / 2 Bathroom / 2 Living Area Home - a perfect blend of classic charm and modern elegance. This meticulously renovated residence offers a harmonious combination of historical features and contemporary amenities, creating a truly inviting and comfortable living space.

### Key Features:

**Four Bedrooms:** The home boasts four spacious bedrooms, providing ample space for the entire family or guests. Each bedroom is thoughtfully designed to maximize comfort and functionality.. The master bedroom features a walk-in robe & recently renovated ensuite.

**Two Bathrooms:** Enjoy the luxury of two beautifully renovated bathrooms, featuring modern fixtures and finishes. The design seamlessly combines style and practicality..

**Two Living Areas:** This property features not one, but two distinct living areas, providing flexibility for various family activities. Whether you prefer a cozy family movie night or a more formal entertaining space, this home has it all.

**Renovated Kitchen:** The heart of the home is the renovated kitchen, equipped with modern appliances including gas cooktop & new dishwasher, ample storage, and stylish countertops. It's a perfect space for culinary enthusiasts and those who enjoy entertaining.

**Classic Federation Charm:** Preserving the charm of its Federation roots, this home showcases timeless architectural elements, such as high ceilings, ornate detailing, and beautiful period features that add character to every room.

**Modern Amenities:** While honoring its heritage, this home has been thoughtfully updated with modern conveniences, ensuring a seamless

**4 BED | 2 BATH | 2 CAR**

**PRICE:**  
\$550,000

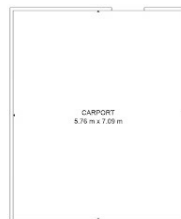
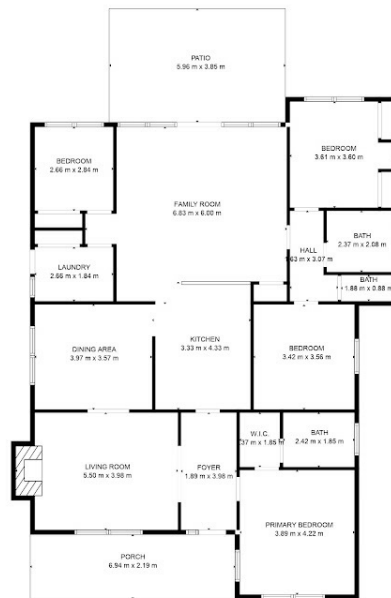
**OPEN FOR INSPECTION:**  
N/A



**Ashley Hall**  
**0429173775**

ashley@atrealty.com.au  
[www.ashrealestate.com.au](http://www.ashrealestate.com.au)

335 HENRY STREET



NICOLE CONNELLY PHOTOGRAPHY  
0458 122 661

TOTAL: 168 m<sup>2</sup>

EXCLUDED AREAS: PATIO: 23 m<sup>2</sup>, PORCH: 15 m<sup>2</sup>, CARPORT: 41 m<sup>2</sup>,  
FIREPLACE: 1 m<sup>2</sup>

MEASUREMENTS ARE CALCULATED BY NICOLE CONNELLY CREATIVE. DEEMED HIGHLY RELIABLE BUT NOT GUARANTEED.

Disclaimer: Please note this floor plan is for marketing purposes and is to be used as a guide only. All dimensions are estimates only and may not be exact measurements.