

SOLD

LIFESTYLE SUBURB IN THE HEART OF BRISBANE

First time buyers / investors take note. This 2 bedroom unit is in the perfect location only 6 km to Brisbane CBD in a vibrant and active community. The wonderful position is a short stroll to the Brisbane River and Corso where cycle paths lead directly to Southbank and the University of Queensland. Set in a boutique complex of 3 units, number 1 has 2 good sized bedrooms, modern bathroom and kitchen. The lovely leafy outlook of this unit is in line with the many parks and old growth trees of the suburb, while the private yard attached is fully fenced as a peaceful haven for enjoying that deserved cup of coffee, some gardening or a place to keep the animals. (Ducks not included)

Comprising

- Open plan living and dining with new air conditioner.
- Two spacious bedrooms with air conditioning.(Main with built-ins)
- Modern kitchen with pantry and dishwasher.
- Timber Floors throughout.
- Balcony with leafy outlook.
- Single LUG with laundry, extra storage and dedicated back door.
- Private fenced backyard.
- New double glazed windows for noise reduction and energy efficiency.
- New hot water system.
- New external hardwood stairs.

Lifestyle choices close by include -

- Brisbane Corso.
- Green Bridge to university of QLD.
- Yeronga Rail Station.
- Olympic Football Club.
- Tennyson Tennis Centre.
- Yeronga Memorial Park and many other parks.
- Yeronga Olympic Pool.
- Yeerongpilly Green (new shopping complex)
- Fairfield Gardens Shopping Ctr.
- Foco Nuovo - House Concerts in Yeronga.

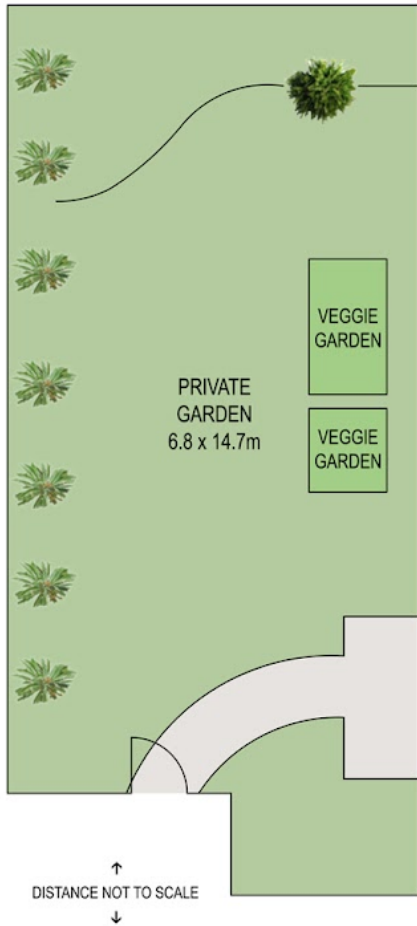
2 BED | 1 BATH | 1 CAR

PRICE:
\$500,000

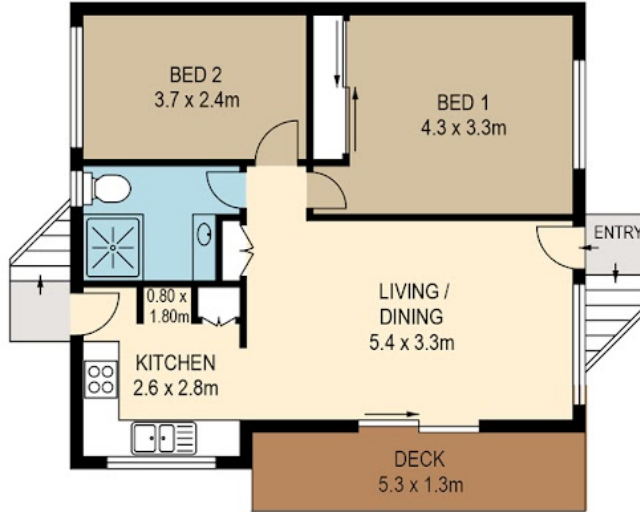
OPEN FOR INSPECTION:
N/A



Trish Holliday
0411825808
trish@atrealty.com.au
www.atrealty.com.au



LOWER LEVEL



APARTMENT LEVEL



PLANS SHOWN ONLY INDICATIVE OF LAYOUT. DIMENSIONS ARE APPROXIMATE.

All information contained herein is gathered from sources we believe to be reliable. However we cannot guarantee its accuracy and interested persons should rely on their own enquiries.

internal 76sqm
external 9sqm
total 85sqm



Disclaimer: Please note this floor plan is for marketing purposes and is to be used as a guide only. All dimensions are estimates only and may not be exact measurements.

www.realscope.com.au