



SOLD

MODERN LIVING AT ITS BEST!

This Craftsman builder is offering this brand new double storey townhouses!
Features: 3-bedroom, 2-bathrooms, 3-toilets, double storey, double garage, front panel lift door & rear access doors. Comprising a luxurious kitchen with stone bench tops, island breakfast bar, stainless steel appliances all overlooking the spacious meals area and the open plan lounge/living room with separate laundry, separate powder room and internal access via the garage.

The master bedroom with full ensuite, fully fitted walk in robe, 2 more generous bedrooms with fitted built in robes, upstairs landing / open study, separate family bathroom and toilet. 2.7meter ceiling with high set internal doors, carpets to bedrooms and upstairs living, engineered timber floors to downstairs living, tiles to wet areas, quality fixtures and fittings, floor to ceiling tiles in the bathrooms and so much more.

Enjoy this modern home and the ease of access to the rear yard, the deck, the alfresco BBQ area and the low maintenance gardens.
An Inspection will delight!

Thinking of selling now or in the future? For a free-market appraisal Call
Lou 0417-166-668 / Leeanne 0404-261 469 or email lou@atrealty.com.au
Statement of information will be available upon request.

Inspection times and property availability are subject to change without notice. Disclaimer: All information contained herein is gathered from sources we believe to be reliable. We cannot guarantee its accuracy and interested parties should make and rely on their own enquiries.

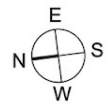
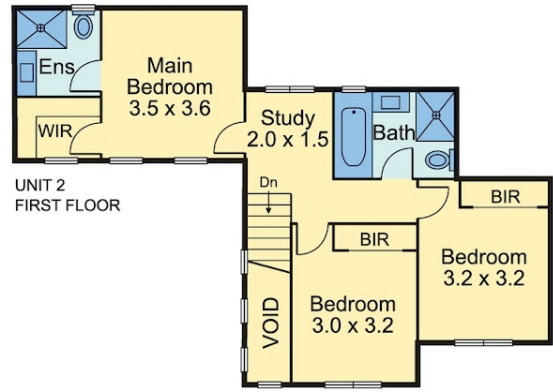
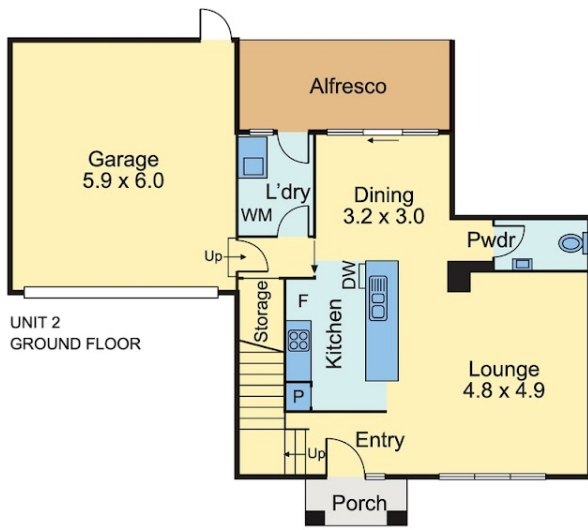
3 BED | 2 BATH | 2 CAR

PRICE:
\$910,000

OPEN FOR INSPECTION:
N/A



Lou Rinnovasi
0417166668
lou@atrealty.com.au
www.atrealty.com.au



Every care has been taken to verify the accuracy of the details and dimensions in this property plan. Prospective purchasers are advised to make their own enquiries to satisfy themselves in all respects. The plan is a representation only and is not necessarily to scale.

Disclaimer: Please note this floor plan is for marketing purposes and is to be used as a guide only. All dimensions are estimates only and may not be exact measurements.