



SOLD

LOCATION, VIEW'S AND STUNNING RENOVATION

Be impressed with this beautifully renovated home with the most outstanding views over the city of Mount Gambier.

Built on the side of Mount Gambier's crater lakes, this home sits on an elevated allotment, with rear yard access to the Lakes area and its many walking trails.

Shelley Crescent is one of Mount Gambier's most sought-after locations, close to Tenison Woods College, and is a quiet cul de sac with very little traffic.

The home has been completely renovated over the last few years and is a credit to the owners, as the finishes, colours and styling make this home perfect for modern living.

Step inside to a welcoming entrance hallway, with the downstairs consisting of a double garage and workshop with remote roller door.

Also on the lower floor is the main bedroom, which is large, having window views to the North, and complemented with VJ panelling and built in office/computer area, a large walk-through robe leads to a stunning en-suite with separate toilet, stand alone feature bath, large shower recess and quality floor to ceiling tiling.

Character timber stairs with built in lighting leads you to the main part of the house.

As entering to the open family kitchen meals area, you are dazzled by some of the best views of the city, through large north facing windows which not only capture the view but also the aspects of the North winter sun.

The feature of the family room is modern kitchen with caesarstone benchtops, Electrolux appliances feature splash back, black tapware and floating timber floor which flow throughout the house.

A feature wall displays a built-in slow combustion heater, perfect to sit in front through those winter months and enjoy the view.

Off the kitchen is the popular butler's pantry ideal for dinner preparation, heaps of storage space, a place for the coffee machine to get your mornings to a great start. Adjoining the butler's pantry is a well-appointed laundry with again having modern classy finishes.

Three bedrooms upstairs all have the luxury of walk-in robes with their own dressing/ vanity table.

The main bathroom is large and open with quality fittings and again stunning with floor to ceiling tiling.

Sliding door from the meals area leads to a large private rear yard, complemented by established teddy bear magnolias and Mexican Orange Blossoms surrounding a gazebo/ fire pit area ideal

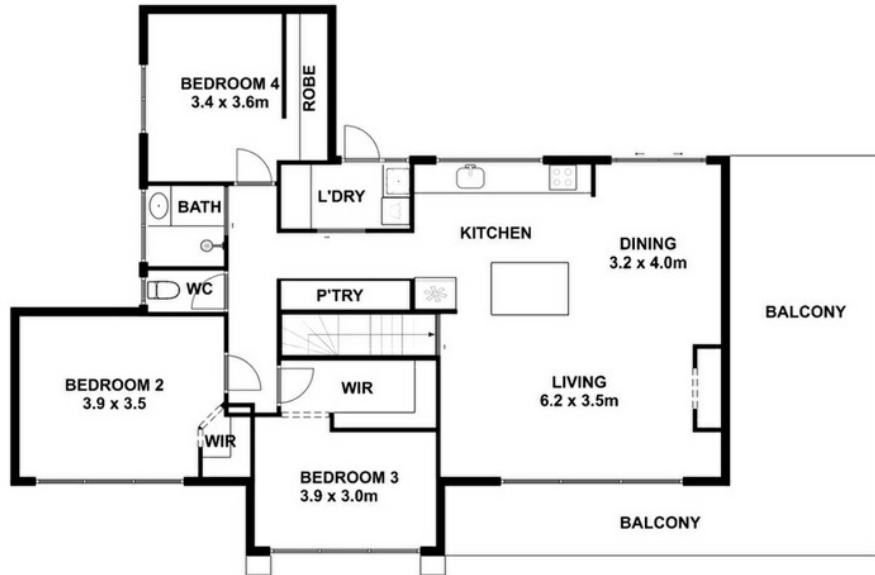
4 BED | 2 BATH | 3 CAR

PRICE:
\$850,000

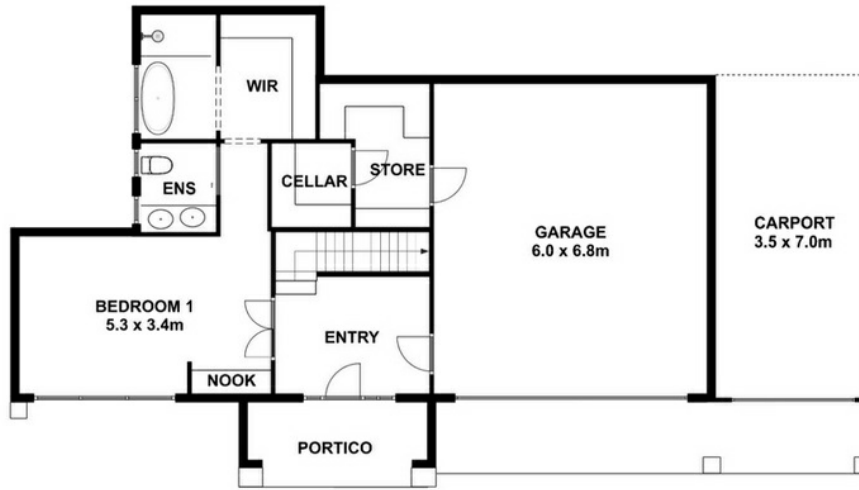
OPEN FOR INSPECTION:
N/A



Peter Dempsey
0418854393
peterdempsey@atrealty.com.au
peterdempseyatrealty.com
RLA: 269823



UPPER LEVEL



Living :	240 SQ.M
Carport :	24.SQ.M
Portico :	7 SQ.M
Alfresco :	24 SQ.M
Total :	295 SQ.M

This drawing is for illustration purpose only. All measurements are approximate and information intended to be relied upon should be independently verified.

Disclaimer: Please note this floor plan is for marketing purposes and is to be used as a guide only. All dimensions are estimates only and may not be exact measurements.