

SOLD

EXECUTIVE TOWNHOUSE IN PACIFIC PINES

OPEN HOME TIMES TO FOLLOW

Luxurious and spacious townhouse nestled within an exclusive boutique development - conveniently situated near all amenities! Easily accessible to local schools, shopping centres (Coles Shopping Centre Pacific Pines just across the road), and public transportation right at your doorstep. This remarkable residence features a secluded and fenced backyard for added privacy. Contemporary and impeccably maintained, this property is bound to leave a lasting impression!

Highlights include:

Contemporary and spacious townhouse constructed with solid rendered brick and adorned with a modern facade and colorbond roofing. Developed by Sunland group, it boasts three generously sized double bedrooms (including a king-size master with ensuite featuring a large shower) and a spacious walk-in wardrobe.

Two bathrooms located upstairs, supplemented by an additional powder room downstairs.

Expansive open-plan living areas perfect for entertaining.

State-of-the-art designer kitchen complete with an island bench featuring a breakfast bar, luxurious stone countertops, gas cooktops, dishwasher, and stainless steel electric oven.

Generous private and fenced courtyard providing a serene outdoor retreat.

Automated lock-up garage along with ample visitor parking space.

Reverse cycle air conditioning ensuring comfort in the living area and master bedroom.

Situated within a modern boutique complex in a highly desirable central location. Surrounded by schools, parks, and various shopping centres (including Westfield Helensvale and Pacific Pines Town Centre), with easy access to bus routes servicing Griffith University and Gold Coast Hospital, as well as proximity to the M1 Motorway.

3 BED | 2 BATH | 1 CAR

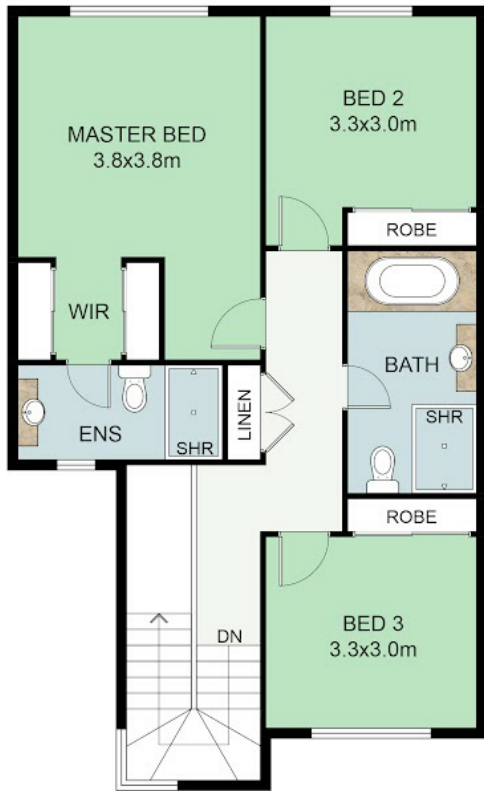
PRICE:
\$705,000

OPEN FOR INSPECTION:
N/A

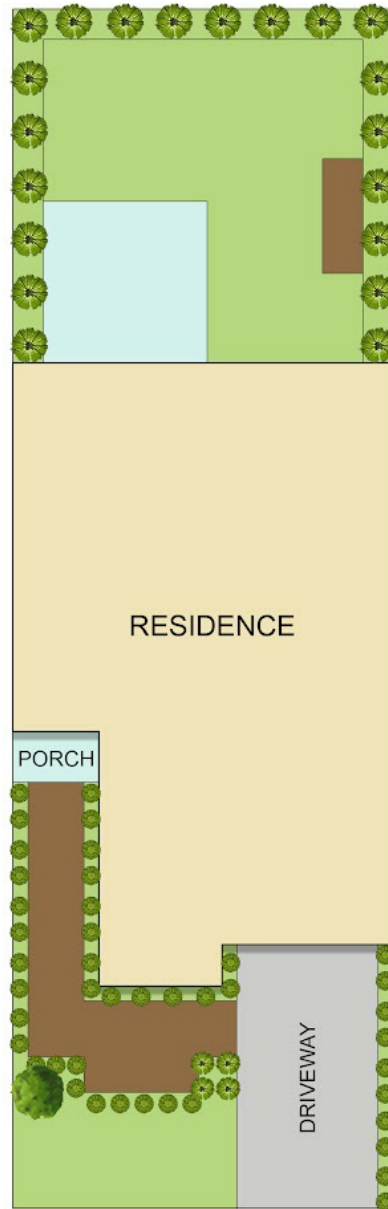


Tony Brown
0418961500
tonybrown@atrealty.com.au
www.atrealty.com.au

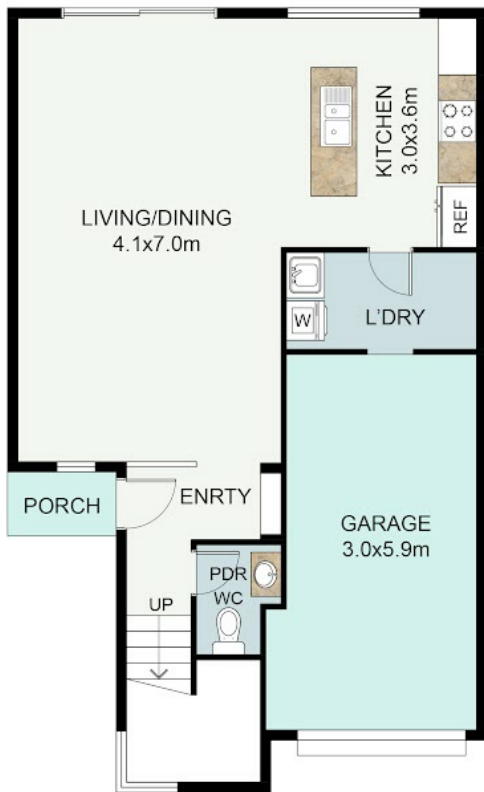
CONTACT:
TONY BROWN
 tonybrown@realty.com.au
 0418 961 500
 @realty



FIRST FLOOR PLAN



SITE PLAN



Disclaimer: Please note this floor plan is for marketing purposes and is to be used as a guide only. All dimensions are estimates only and may not be exact measurements.

All buyers must do their own investigations into the accuracy of these plans.