

**SOLD**

## FULLY LANDSCAPED & RENOVATED - READY TO MOVE IN

Dating back to an era defined by unparalleled quality, this brick family residence exudes an irresistible charm and character. Meticulously maintained, and now enriched by a complete renovation and landscaping, it has been witness to countless moments of joy.

For more detailed information visit the dedicated property website at [www.111mckenziestreet.com](http://www.111mckenziestreet.com)

Showcasing timeless period elements such as lofty ceilings, intricate plasterwork, and exquisite hardwood floors, the residence seamlessly integrates modern upgrades including a sleek kitchen with stone bench tops and ample storage. An array of stylish bathrooms, spacious and functional, complement the layout which encompasses a generous main lounge, an additional expansive living area or workspace, and a delightful dining space adjacent to the kitchen. The grand master bedroom boasts floor-to-ceiling built-in wardrobes and a private ensuite.

A substantial covered deck at the rear of the property provides a perfect setting for year-round gatherings, while the well-maintained gardens, extensive garaging, and sheds accessible from the rear lane offer views of the Wonthaggi Golf Club. Positioned on a sizeable block spanning approximately 972 square meters, this residence benefits from a convenient location within walking distance of the CBD, public transport, and schools.

The location, space and parking potential would also make this property perfect for a home based business.

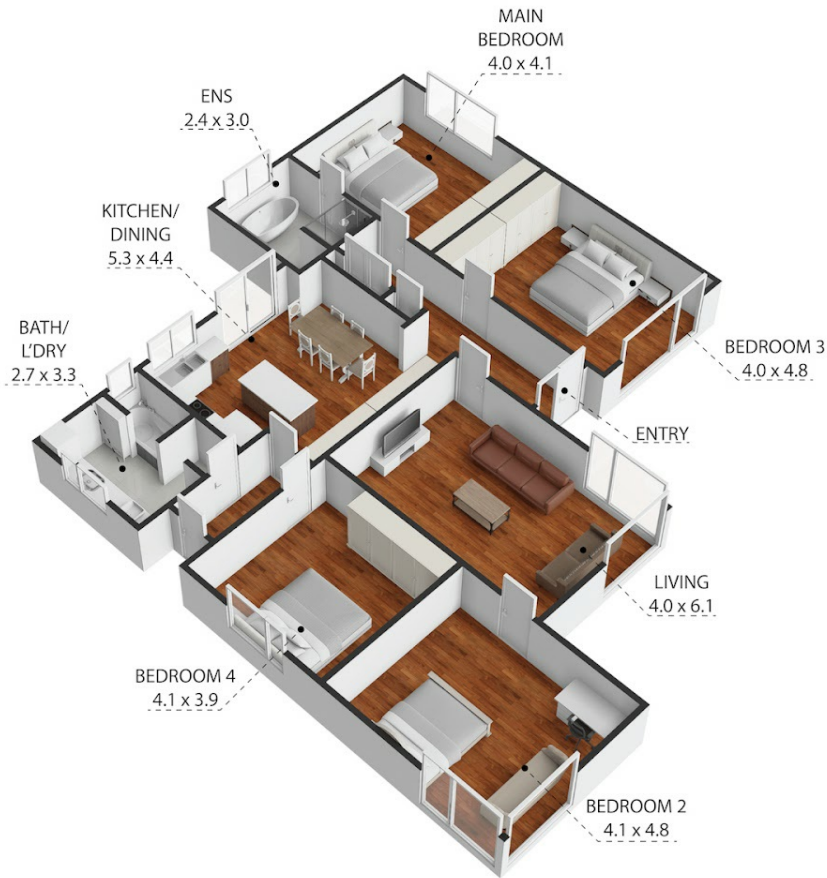
4 BED | 2 BATH | 2 CAR

PRICE:  
\$680,000

OPEN FOR INSPECTION:  
N/A



**Leo Edwards**  
0472523445  
[leo@atrealty.com.au](mailto:leo@atrealty.com.au)  
[www.atrealty.com.au](http://www.atrealty.com.au)



111 McKenzie Street, Wonthaggi 3995

TOTAL APPROX. FLOOR AREA 158 SQ.M

Whilst every attempt has been made to ensure the accuracy of the floor plan contained here, measurements of doors, windows, rooms and any other items are approximate and no responsibility is taken for any error, omission, or misstatement. This plan is for illustrative purposes only and should be used as such by any prospective purchaser.

**INVERLOCH**  
RESEARCH

@realty

Disclaimer: Please note this floor plan is for marketing purposes and is to be used as a guide only. All dimensions are estimates only and may not be exact measurements.

Leo Edwards  
0472523445  
leo@atrealty.com.au  
www.atrealty.com.au

@realty