



# SOLD

## LOVE AT FIRST SIGHT!

MULTIPLE OFFERS RECEIVED FOR THIS MAGNIFICENT PROPERTY

### LOVE AT FIRST SIGHT!

Your every sense will be delighted as you walk through this luxurious, fully renovated Kingsley home. Thoughtful architecture with recent modern renovations are evident within every element of this home both inside & out. This is definitely a home like no other & will suit the most discerning of buyers.

### FEATURES INCLUDE:

- King size master bedroom with WIR, fully renovated en-suite PLUS a bonus room to be used either as a nursery or create a HUGE WIR, the choice is yours! Refer to attached plan
- Minor bedrooms double size – 2,3,4 with BIR's & ceiling fans
- Fully renovated family bathroom in neutral tones, wall hung, stone top vanity with overhead mirrored cabinets, separate toilet
- High spec, designer kitchen that is sure to impress with plumbed in double fridge recess, Bosch steam oven & conventional oven, Induction cook top, rangehood, Fisher Paykel dishwasher, stunning Caesar stone, waterfall benchtops with recessed double sink, glass splashback, big pantry, storage is abundant with soft close draws. Convenient 'shoppers' entrance from garage directly into kitchen.
- ENORMOUS open plan kitchen/dining & living room – absolutely stunning space & definitely the heart of this home! With easy-care floorboards, an abundance of natural light flowing through plentiful windows & doors whilst seamlessly integrating with the resort style pool and alfresco – you can't help but be impressed!
- Formal lounge/theatre room with plush carpet – a lovely, serene space
- Study with long built in desk with room for up to 4 chairs
- Laundry fully renovated with Caesar stone bench tops, glass splashbacks, half doubles as a butler pantry
- Alarm, security screens & doors, security shutters, sensor lights outdoors
- Ducted evap air-conditioning throughout, gas bayonet, NBN
- HWS instantaneous

### ALFRESCO & OUTDOOR SPACE

Indulgence at its best! This beautiful space was created by the current owners in Dec 2022. They wanted an all-year-round usable space which has definitely been achieved!

- Alfresco - entertaining made easy with the extra-large alfresco, with gabled roof & stunning

4 BED | 2 BATH | 2 CAR

### PRICE:

\$1,160,000

### OPEN FOR INSPECTION:

N/A

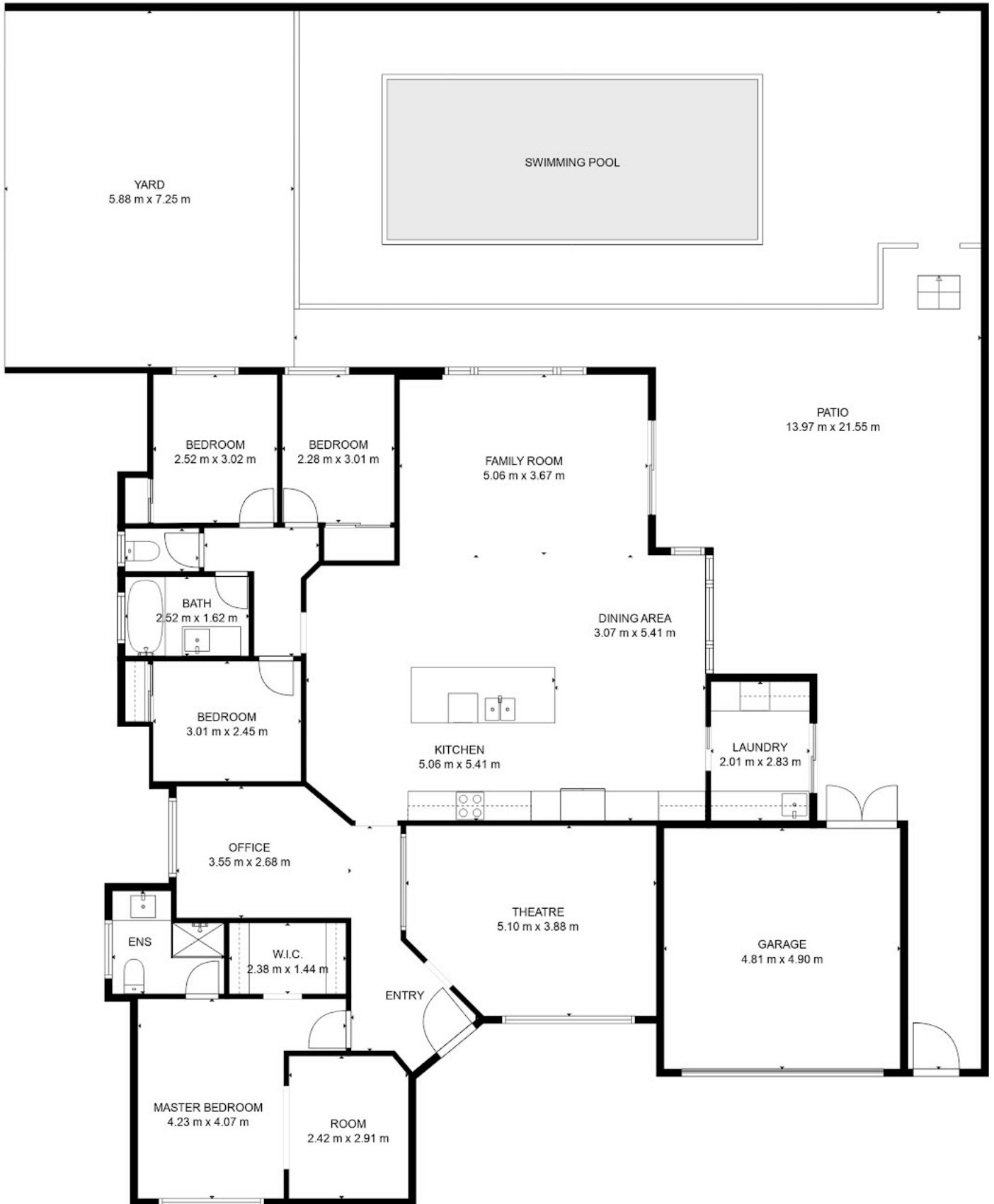


**Jill Groves | Chloe Leggett Team**

**0408765240**

jillgroves@atrealty.com.au

[www.atrealty.com.au](http://www.atrealty.com.au)



Disclaimer: Please note this floor plan is for marketing purposes and is to be used as a guide only. All dimensions are estimates only and may not be exact measurements.

**@reality** 3 Whitburn Rd, Kingsley

Jill Groves | Chloe Leggett Team

0408765240

jillgroves@atrealty.com.au

www.atrealty.com.au

Not to scale • All measurements are approximate • Drawn for presentation purposes only

**@reality**