



SOLD

AMAZING CITY VIEWS IN THIS MODERN AFFORDABLE 2 BEDROOM UNIT

"Twenty seven Borgia" is a modern apartment complex completed in 2017, located under 5.5km from the heart of Brisbane CBD. This affordable modern apartment would make the perfect first home, investment or those looking to downsize.

Features include:

- * Two generous bedrooms with built-in wardrobes
- * Modern open plan kitchen with dishwasher, dining and lounge room
- * Air-conditioning in living and bedroom plus ceiling fans
- * Large private covered balcony
- * One secure car park

Such a fantastic location with its access to transport into the CBD or easy access to Woolloowin train station this unit is a must see for convenient inner city living.

You will feel connected with a direct link to the city, a short stroll to Lutwyche Bus Station redefining easy commuting. Whether you are homeward bound or heading out, the CBD, Airport via the tunnel, Centro Lutwyche Shopping Centre, Royal Brisbane Hospital and an array of shops, restaurants and the stunning Kedron Brook parkland are all just minutes away.

- * Current Lease in place \$615 expires 12th July 24
- * Body Corp approx \$108.50 per week
- * Rates approx \$1934.00 pa

Whether you are looking as a future first homeowner, investing, or downsizing, this is a must see.

Disclaimer: The information provided has been obtained in good faith and is to be used as a guide only. @realty nor the acting agent/s provide any guarantees, undertakings, or warnings as to the accuracy, completeness, or up-to-date nature of the information provided by the Vendor or other Persons. We urge all interested parties to undertake their own due diligence independently in determining whether or not this information is in fact accurate. The website may have filtered

2 BED | 2 BATH | 1 CAR

PRICE:
\$681,000

OPEN FOR INSPECTION:
N/A

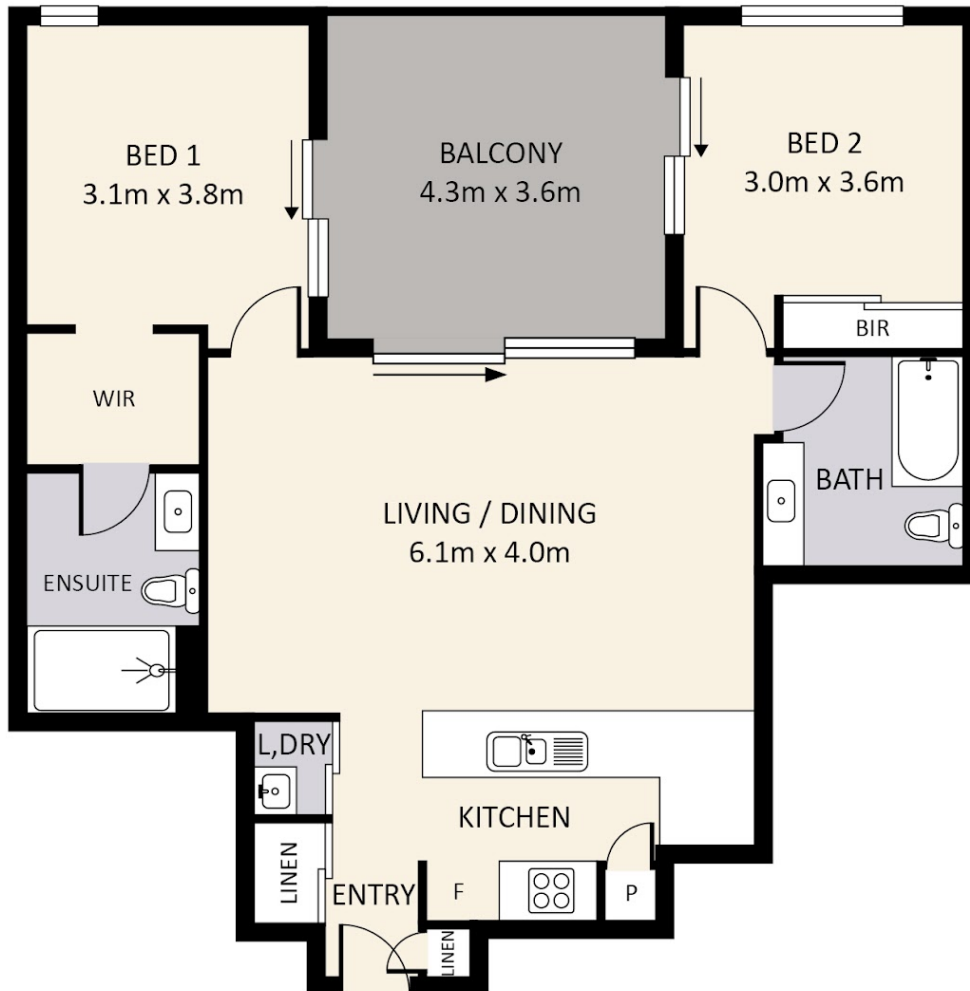
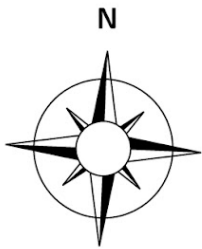


Gregg Hewitt
0413442229
gregg@atrealty.com.au
Gregg Hewitt

25/27 High Street Lutwyche



Internal 82m² | External 14m² | Total 96m²



Disclaimer: Floor plan measurements are approximate and for illustrative purposes only.

Disclaimer: Please note this floor plan is for marketing purposes and is to be used as a guide only. All dimensions are estimates only and may not be exact measurements.

