



**SOLD**

## VERSATILE FLOOR PLAN

Well maintained 3 bedroom home in a quiet court location ideal for couples starting out or slowing down.

Features Include:

- Formal entry
- 3 bedrooms (built in robes to bedroom 2)
- En-suite plus walk in robe to bedroom 1
- Open plan living and dining
- Family room
- Gas kitchen with breakfast bar
- Ducted evaporative cooling
- Gas heating
- Outdoor entertaining area
- Easy care gardens with rainwater tank and tool shed
- Carport with remote roller door
- Land size 330m<sup>2</sup> (approx.)

All information provided has been obtained from sources we believe to be accurate, however, we cannot guarantee the information is accurate and we accept no liability for any errors or omissions (including but not limited to a property's land size, floor plans and size, building age and condition). Interested parties should make their own inquiries and obtain their own legal advice.

RLA 269823

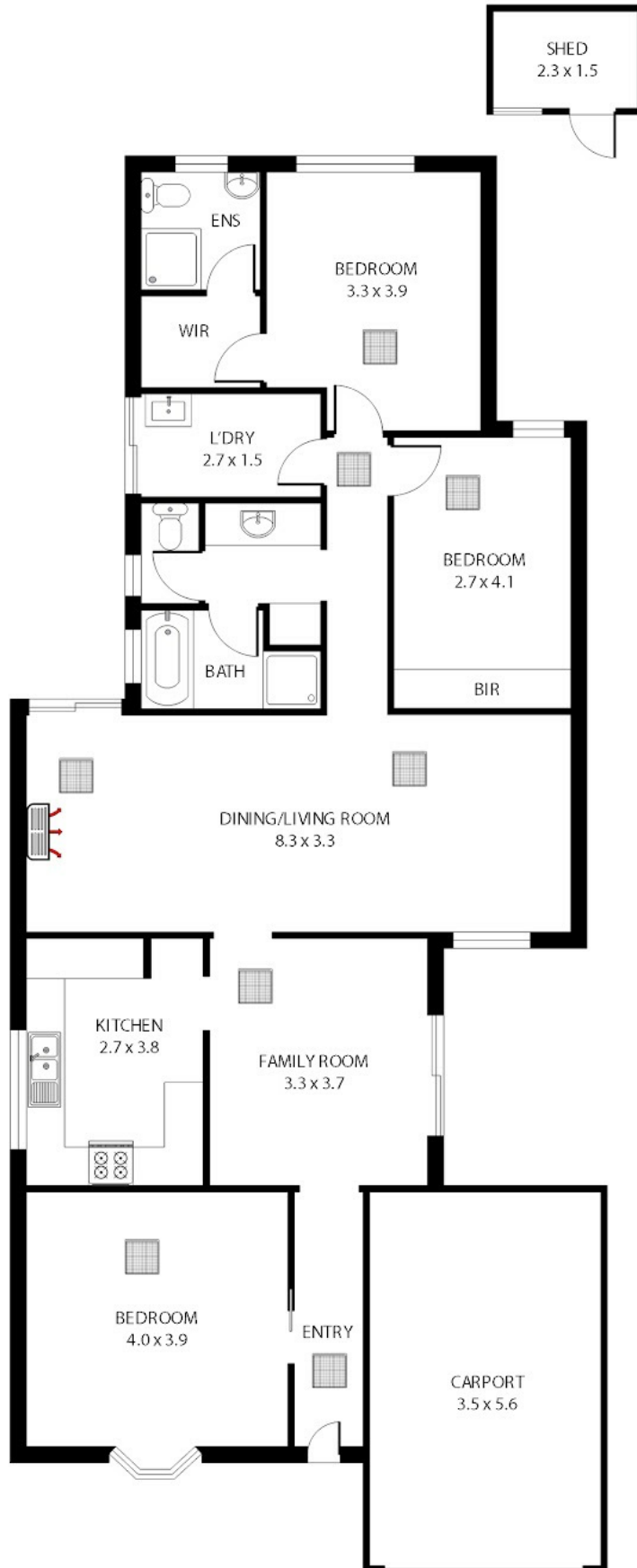
**3 BED | 2 BATH | 1 CAR**

**PRICE:**  
\$580,000

**OPEN FOR INSPECTION:**  
N/A



**Darren Bayford**  
**0403776577**  
dbayford@atrealty.com.au  
[www.atrealty.com.au](http://www.atrealty.com.au)  
RLA: 269823



157m<sup>2</sup>    124m<sup>2</sup>    20m<sup>2</sup>    3m<sup>2</sup>

Disclaimer: Please note this floor plan is for marketing purposes and is to be used as a guide only. All dimensions are estimates only and may not be exact measurements.

Whilst every attempt has been made to ensure the accuracy of the floor plan contained here, measurements of doors, windows, rooms and any other items are approximate and no responsibility is taken for any error, omission, or misstatement. This floor plan is for illustrative purposes only and should be used as such by any prospective purchaser.

**Darren Bayford**  
 0403776577  
 dbayford@atrealty.com.au  
[www.atrealty.com.au](http://www.atrealty.com.au)

