



SOLD

GREAT INVESTMENT OR PLACE TO LIVE OFFERS OVER \$260,000

Located at 'Castlepoint Apartments' in the popular inner-city suburb of Belgian Gardens, in a secure gated community, is this modern, easy-care unit.

TO INSPECT TODAY CALL GERARD TODAY ON - 0426779633.

This stunning 106 sqm ground floor unit has 1 bedroom, bathroom and car parking space and the bonus of the huge front patio that overlooks the central pool area, just ideal for entertaining and relaxing.

The modern kitchen is a chef's delight, equipped with top-of-the-line stainless steel appliances, ample storage, and sleek stone countertops, whilst the bathroom is generously sized with a large walk-in shower and includes the laundry. (See the attached floorplan).

The community pool area features a child's pool, barbeque area and covered sitting areas, all in a lovely tropical setting.

The property is currently rented through NRAS at \$315 per week until the 3/6/24 after which the new owner can elect to continue or end the agreement.

New rental estimate \$360+ pw
Body corporate fees are \$112 pw
Rates are approximately \$3,173.80 per year.

Other great features of the property are:

- Remote entry to the complex and the buildings,
- Camera security in the public areas,
- Designated car parking space and storeroom,
- Located a short distance from the city, waterfront and airport.

This is an incredible opportunity for occupiers or investors to get their foot into the growing Townsville property market.
Call today and arrange an inspection.

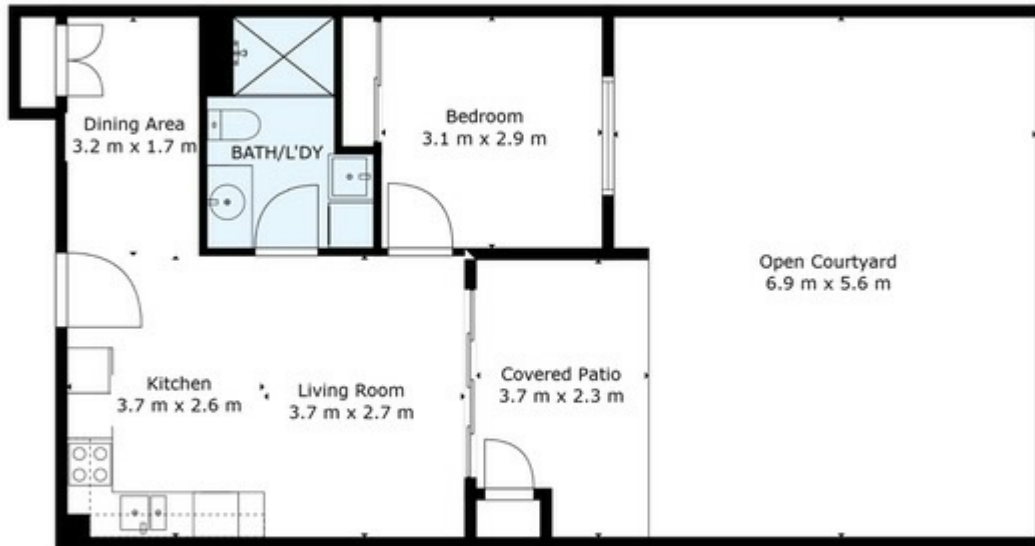
1 BED | 1 BATH | 1 CAR

PRICE:
\$267,500

OPEN FOR INSPECTION:
N/A



Gregg Hewitt
0413442229
gregg@atrealty.com.au
Gregg Hewitt



UNIT 202/167-173 BUNDOCK STREET, BELGIAN GAEDENS, QLD, 4810

This floor plan including furniture, fixture measurements and dimensions are approximate and for illustrative purposes only.

Disclaimer: Please note this floor plan is for marketing purposes and is to be used as a guide only. All dimensions are estimates only and may not be exact measurements.