



SOLD

PRIVATE TRI LEVEL QUALITY TOWNHOUSE IN BLUE CHIP LOCATION

Rare as hens teeth!

This tri-level Architecturally designed three bedroom townhouse has a stylish vibe, with trendy additional features you normally wouldn't expect to see in a townhouse.

Featuring :

- An impressive timber stairway leads the way to a the light filled loft space. The loft is an area you will love due to its versatility, and as a bonus the loft comes air-conditioned. In addition, there is a designated study area or home office centrally located to all three bedrooms.
- The master bedroom comes with a complete wall of floor to ceiling built-ins, and you'll appreciate the high ceilings.
- Tucked away at the rear of a small complex of just four townhouses.
- Larrakeyah is a highly desirable suburb
- Open plan living & dining space opening out to the back courtyard
- Guests powder room with 3rd toilet off the internal laundry
- Double attached carport with direct entry into townhouse
- Paved rear courtyard garden with garden storage shed
- Fully Fenced to keep pets inside
- This property is a substantial 323m2 on Title

BODY CORP MANAGER : Whittles

BODY CORP FEES : Approx \$1970 per qtr

DCC RATES : \$1700 per year

Contact Agent today on 0417 508800 to book your inspection.

4 BED | 2 BATH | 2 CAR

PRICE:
\$630,000

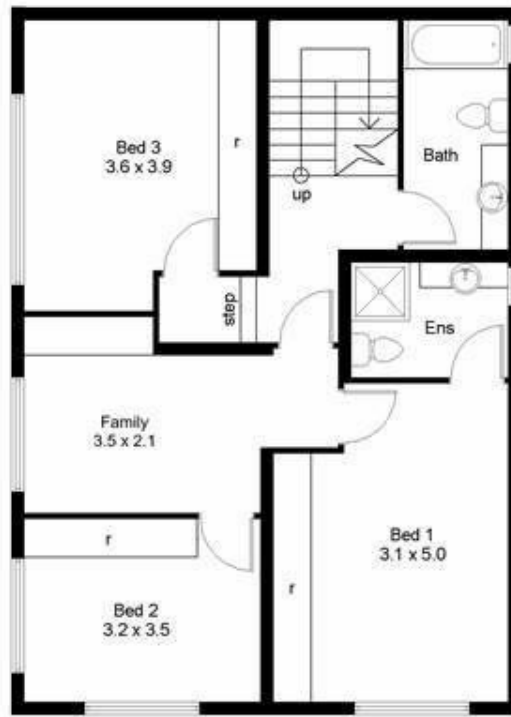
OPEN FOR INSPECTION:
N/A



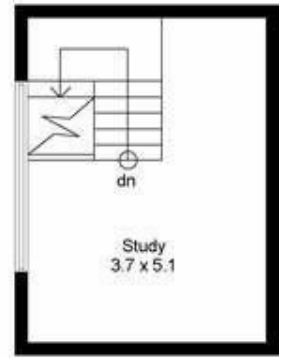
Nicole Wheeler
0417508800
nicolewheeler@atrealty.com.au
www.atrealty.com.au



Ground floor



First floor



Second floor

UPRN: 1014820



Disclaimer: Please note this floor plan is for marketing purposes and is to be used as a guide only. All dimensions are estimates only and may not be exact measurements.