

**SOLD**

## LUSH TROPICAL RAIN FORREST RETREAT

### LUSH TROPICAL RAIN FORREST RETREAT

This is definitely living off the grid. You're very own lush tropical paradise in the Townsville Hinterland.

Waterfalls, creeks, tall trees and lush tropical undergrowth. Walk amongst the Rain Forrest. Lots of birdlife, bush turkeys, parrots, butterflies and wildlife to enjoy. If you are looking for a beautiful property with good soils, reliable, high rainfall and also flood free - this is it. Backs onto the Paluma State Forest abundant in native trees, plants and wildlife. Located just 35 mins north of Townsville and 23 mins from Ingham. It is just 4k from the Frosty Mango and Crystal Creek.

Drive only 10 mins to fish from the local beach, 10 min to swim in the crystal clear waters of Big Crystal creek and just 15 mins to Jourama falls. Like deep sea fishing launch your boat from the Lucinda port to explore the spectacular Hinchinbrook area and find your favourite fishing spots or head for the Reef.

Your choices are endless a beautiful lifestyle in the lush, tropical environment. Privacy, space and peace a feature. The feed growth is phenomenal most of the year keeping your animals fat and healthy. Come and view this property and feel what it's like to get back to nature. Maybe just a weekend retreat to get away from the Rat race or Build your home here for that sea change lifestyle.

There don't think there's any Gorillas in the mist but the Gorilla sticks sure do grow well here.

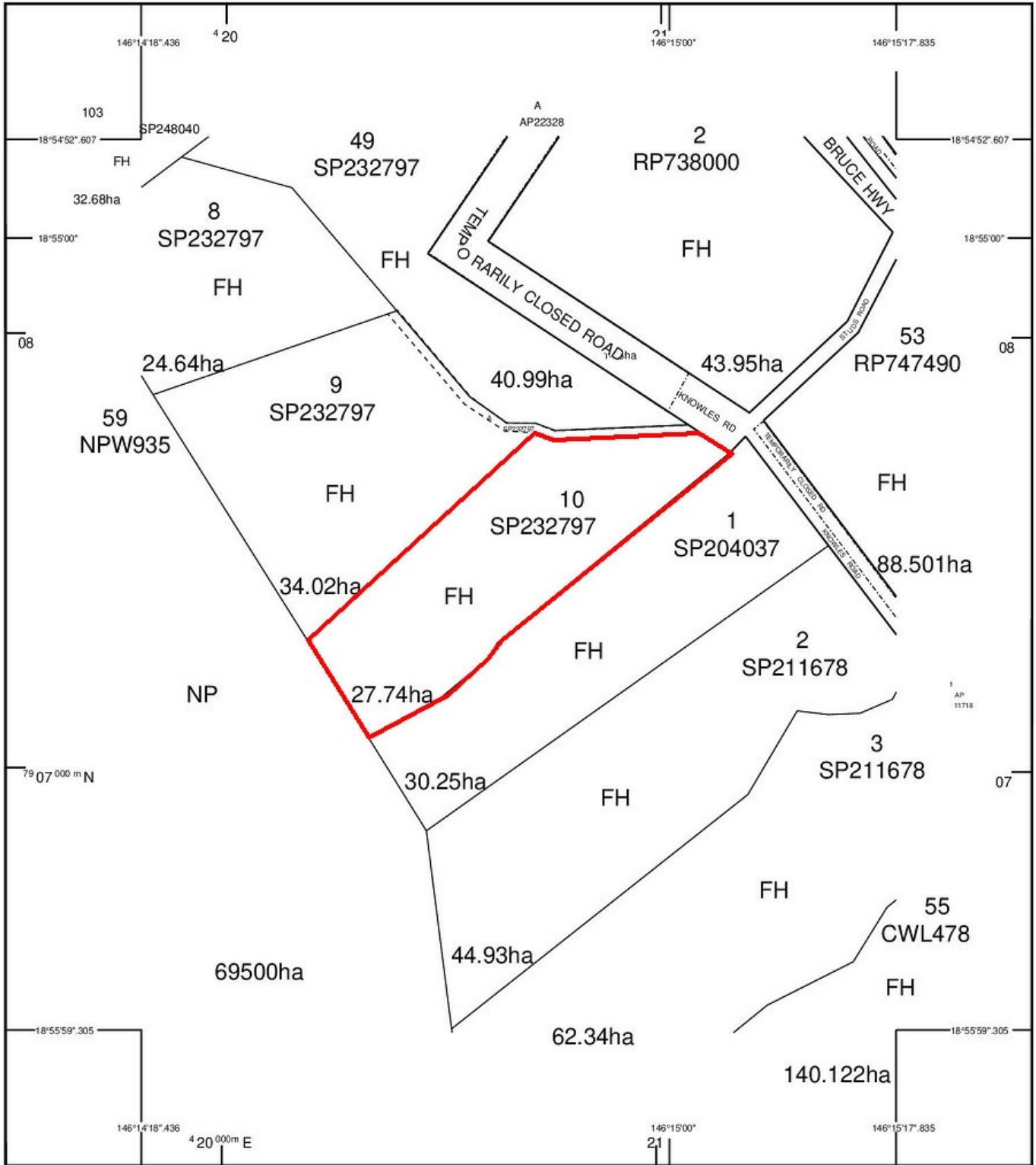
0 BED | 0 BATH | 0 CAR

PRICE:  
\$300,000

OPEN FOR INSPECTION:  
N/A



**Ken Entriken**  
**0419689498**  
kenentriken@atrealty.com.au  
[www.atrealty.com.au](http://www.atrealty.com.au)



STANDARD MAP NUMBER  
8160-32122



**SmartMap**  
An External Product of  
SmartMap Information Services  
Based upon an extraction from the  
Digital Cadastral Data Base

MAP WINDOW POSITION & NEAREST LOCATION

SUBJECT PARCEL DESCRIPTION

DCDB  
Lot/Plan 10/SP232797  
Area/Volume 27.74ha

CLIENT SERVICE STANDARDS

PRINTED 27/02/2024

Disclaimer: Please note this floor plan is for marketing purposes and is to be used as a guide only. All dimensions are estimates only and may not be exact measurements.

**Ken Triken**  
0419689498  
kenentriken@atrealty.com.au  
www.atrealty.com.au

Despite Department of Resources best efforts, RESOURCES makes no representations or warranties in relation to the Information, and, to the extent permitted by law, exclude or limit all warranties relating to correctness, accuracy, reliability, completeness or currency and all liability for any direct, indirect and consequential costs, losses, damages and expenses incurred in any way (including but not limited to that arising from negligence) in connection with any use of or reliance on the Information.  
For further information on SmartMap products visit  
<https://www.qld.gov.au/housing/buying-owning-home/property-land-valuations/smartmaps>

Queensland Government  
(c) The State of Queensland, (Department of Resources) 2024.  
**@realty**