

**SOLD**

## STUNNING BRAND NEW DETACHED DUPLEX

Soto Realty, does it again and we are delighted to present this brand new double storey brick veneer duplex. This is an ideal opportunity for first home buyers, young families or investors. Perfectly positioned in an excellent family friendly location, in one of the best streets and in the heart of Canley Vale.

This modern day double storey duplex is showcasing a spacious open floor plan layout that is combined with ultra modern and spacious interiors with top quality inclusions. It is only a few minutes walk to Canley Vale Train Station, primary schools, child care, parks and more.

### PROPERTY FEATURES:

- \* 5 generous sized bedrooms all with built in wardrobes & 3 ensuites
- \* Quality kitchen with 40mm stone bench tops
- \* Combined dining area & lounge area
- \* 4.5 Stylish modern bathrooms
- \* Single lock up garage with remote control
- \* Internal laundry
- \* Ducted air conditioning system + video intercom system
- \* Alarm system & smoke alarm system
- \* Spacious rear alfresco area with kitchenette

THE VENDOR IS FULLY COMMITTED TO SELL AND ALL OFFERS WILL BE CONSIDERED.

For further information contact below details:

Agents: Saul Soto: 0402 948 807  
BJ Gregory: 0422 333 333

View: Contact the agents for a private inspection

DISCLAIMER: @realty Pty Ltd, believe that all information provided/contained herein be true and correct to the best of our ability and in no way misleading. Purchasers however are all advised to carry out their own enquiries and relevant searches.

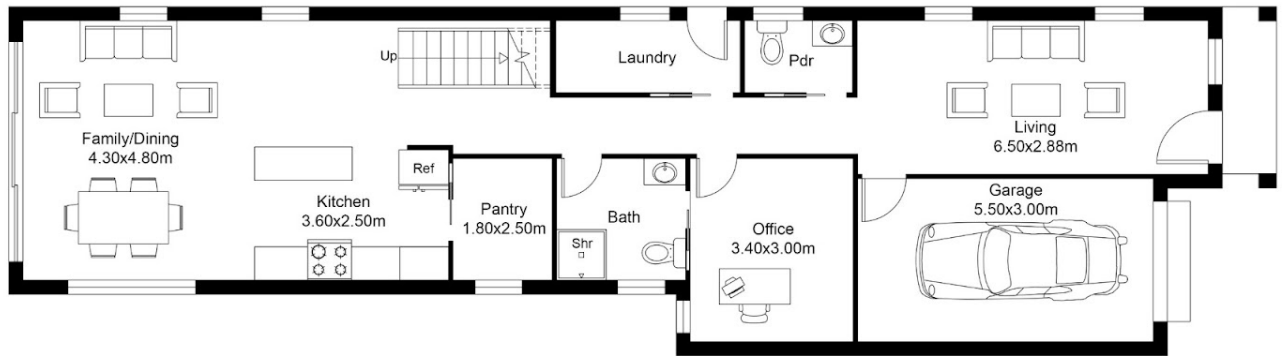
**5 BED | 4 BATH | 1 CAR**

**PRICE:**  
**\$1,225,000**

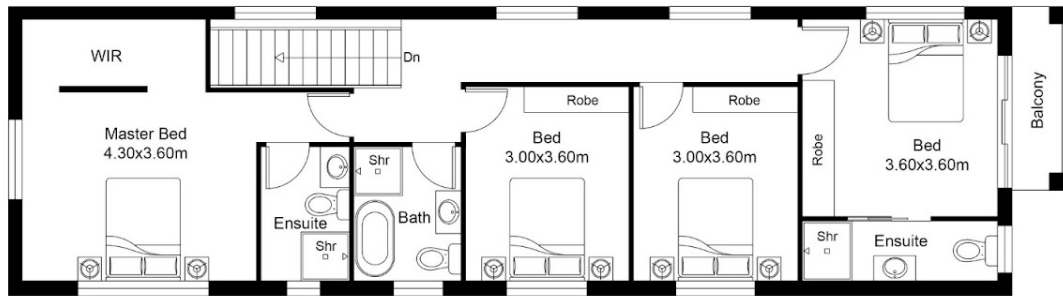
**OPEN FOR INSPECTION:**  
**N/A**



**Saul Soto**  
**0402948807**  
saul.soto@atrealty.com.au  
[www.atrealty.com.au](http://www.atrealty.com.au)



GROUND FLOOR PLAN



FIRST FLOOR PLAN



40A Cardwell Street  
Canley Vale



**SOTO REALTY**  
REAL ESTATE AGENCY



Disclaimer: Please note this floor plan is for marketing purposes and is to be used as a guide only. All dimensions are estimates only and may not be exact measurements.