

SOLD

SEEKING FAMILY -- LARGE OR SMALL

This outstanding property offers a unique opportunity for your family to secure a peaceful and tranquil lifestyle in a desirable location. Situated on a generous elevated 607sqm block, this four bedroom residence provides the perfect setting for a contemporary lifestyle.

Inside, you will appreciate the spaciousness of the family room, the practicality of the large built in bedrooms (main with walk in robe) and the flexibility of the separate living spaces.

The stylish kitchen features large bench space, dishwasher, generous pantry, electric cooking while the adjoining family room and separate dining space creates the centrepiece of this impressive family home. These relaxed living zones connect seamlessly with a generous entertaining area where you are never far from conversation and a comfortable outdoor space, an ideal gathering point for extended family and friends.

Creating family harmony, there is a separate living room at the opposite end of the home to the bedrooms for those who want to turn in early and those that don't.

Just a few of the features on offer here

- 2 bathrooms
- Carpet to bedrooms and lounge
- Tiled living areas
- Ducted vacuum systems
- Double remote garage
- 5kw Solar
- Fully fenced
- Side access

Your new home provides a large fenced space for the kids to play or room for a pool plus an abundance of separate living and entertaining areas.

With so much to appreciate here, you will want to be the first to see it. Those seeking space and privacy with an impressive layout and the flexibility to accommodate family living, should look no further than this beautifully presented contemporary home.

4 BED | 2 BATH | 2 CAR

PRICE:
\$827,500

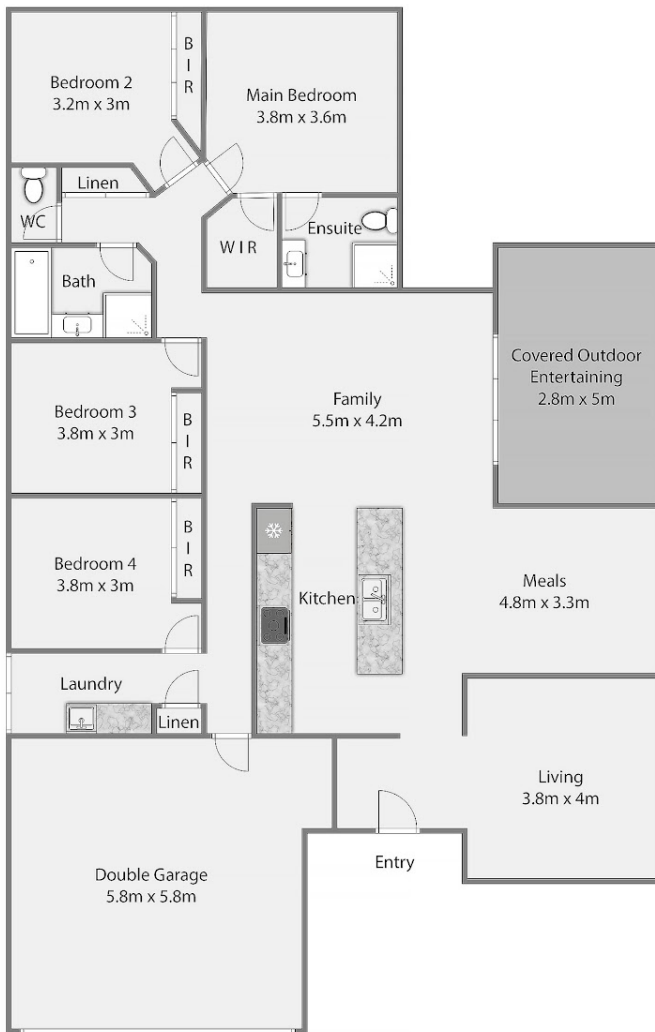
OPEN FOR INSPECTION:
N/A



Vicki Cunningham
0466895574

cunningham@atrealty.com.au
www.atrealty.com.au

17 Poynter Street Redland Bay



This plan is a simple schematic representation of the property.

Whilst every care is taken it should only be considered as an artist impression.

Disclaimer: Please note this floor plan is for marketing purposes and is to be used as a guide only. All dimensions are estimates only and may not be exact measurements.