



FOR SALE

SPACIOUS DUPLEX IN GROWING MORAYFIELD

This impressive Dual key presents an exceptional opportunity for large families or astute investors seeking substantial accommodation in one of Morayfield's most convenient locations. Spanning an impressive 240 square meters of living space on a fully fenced 458 square meter block, this property delivers both space and comfort in a highly sought-after residential area.

The thoughtfully designed layout features six generous bedrooms and four well-appointed bathrooms, making it perfect for multi-generational living or families with teenagers seeking their own space. Two separate living areas provide flexibility for relaxation and entertainment, while the outdoor entertainment area becomes the heart of family gatherings and weekend barbecues.

Climate control is assured year-round with comprehensive air conditioning throughout, including split system and reverse cycle units ensuring comfort in Queensland's variable weather. The double garage provides secure parking for two vehicles, while the fully fenced yard offers privacy and security for children and pets to play safely.

- Six spacious bedrooms for growing families
- Four bathrooms eliminating morning queues
- Two living areas for flexible family dynamics
- Outdoor entertainment area perfect for hosting
- Double garage plus additional driveway parking
- Fully fenced 458sqm block for privacy and security

Morayfield's strategic location places you just 44 kilometres north of Brisbane CBD, with excellent transport links via the nearby railway station connecting you to the city, Ipswich, and Sunshine Coast. The suburb's family-friendly atmosphere is enhanced by excellent educational facilities, including highly regarded primary schools like Morayfield State School with its heritage-listed buildings, Minimbah State School, and Morayfield East State School, plus the well-established Morayfield State High School catering to over 1,600 students.

Daily conveniences are at your doorstep with Morayfield Shopping Centre just minutes away, providing comprehensive retail, dining, and service options. The suburb's rich Scottish heritage, dating back to 1868 when it was named after Morayshire in Scotland, adds character to this predominantly residential area known for its low-set brick homes and family-oriented community.

6 BED | 4 BATH | 2 CAR

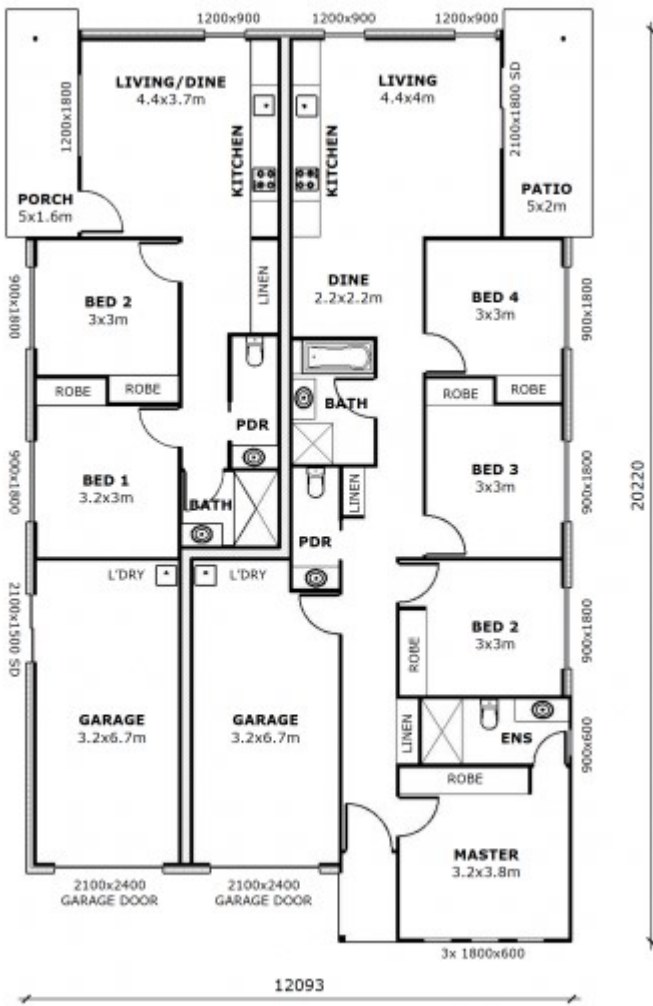
PRICE:
Turn Key

OPEN FOR INSPECTION:
N/A



Ian Partridge
0415733349

ianpartridge@atrealty.com.au
www.atrealty.com.au



Disclaimer: Please note this floor plan is for marketing purposes and is to be used as a guide only. All dimensions are estimates only and may not be exact measurements.