



SOLD

SERENE 4-BEDROOM HAVEN ON 1.5 ACRES

INSPECTIONS BY APPOINTMENT ONLY. ENQUIRE NOW TO ARRANGE YOURS!

Nestled on a serene parcel of land just over 1.5 acres, this inviting home offers a blend of privacy, space, and comfort, making it an ideal choice for families or individuals who cherish tranquility and the beauty of nature. Its strategic position backing onto Ferry Creek, coupled with a beautiful outlook, establishes a sense of seclusion while remaining conveniently close to essential amenities.

The heart of this residence is its well-designed floorplan that features four generously sized bedrooms, ensuring ample space for family and guests alike. Two of these bedrooms are equipped with built-in robes, while the master suite delights with a walk-in robe and a full ensuite, providing a private retreat within the home. The main bathroom is thoughtfully positioned off the kitchen and living room, supporting the flow of daily life.

Central to the home's design is the open plan kitchen and living area, which becomes a focal point for family interactions and entertaining. The kitchen boasts a gas stove, electric oven, an island benchtop, and an abundance of cupboard space. Adjacent to the kitchen, the living room features sliding door access to a securely fenced yard, perfect for pets and children to play safely outdoors. The formal lounge, complete with a fireplace, and the adjacent dining room offer additional spaces for relaxation and hosting gatherings.

Beyond the functional layout, this home is enhanced with features like gas ducted heating, floating floorboards, and solar panels, adding comfort, style, and efficiency to daily living. A laundry room and a double carport further contribute to the home's practicality and appeal.

4 BED | 2 BATH | 2 CAR

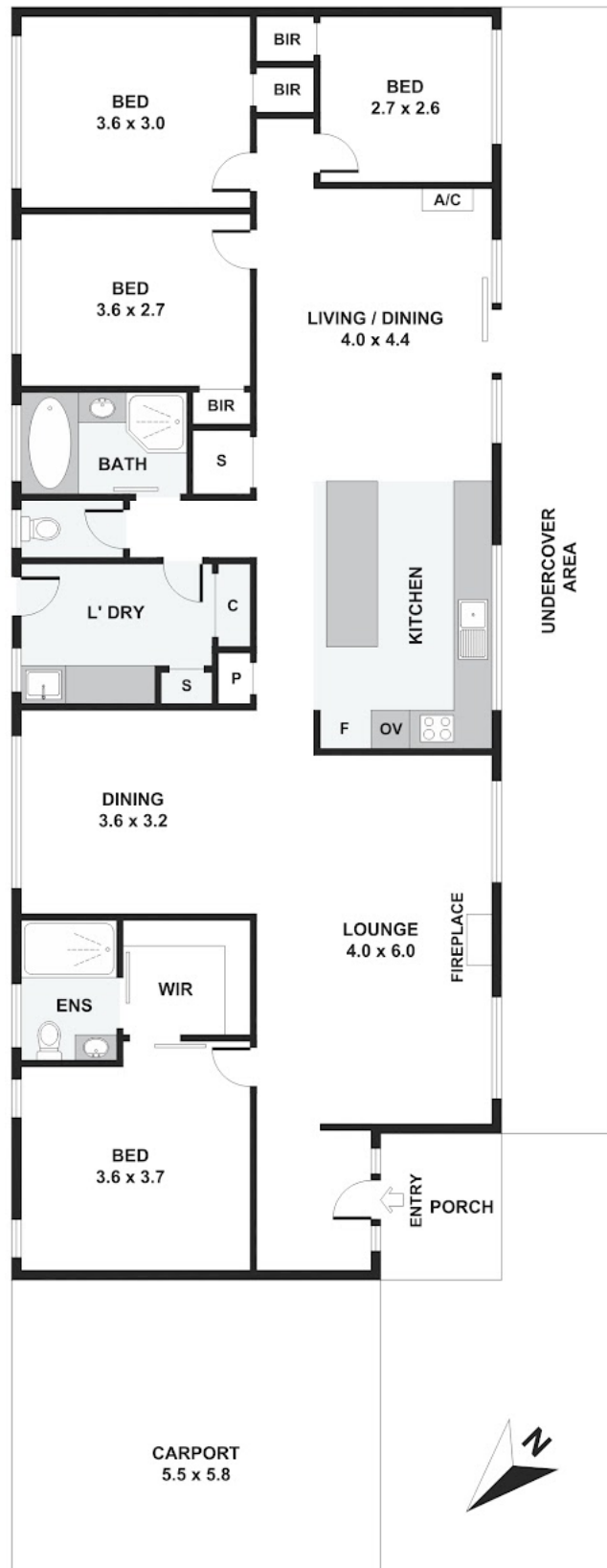
PRICE:
\$1,000,000

OPEN FOR INSPECTION:
N/A



Scott Collins
0499005265
scottcollins@atrealty.com.au
scottcollins.com

78 Hume Street, Upwey



Disclaimer: Please note this floor plan is for marketing purposes and is to be used as a guide only. All dimensions are estimates only and may not be exact measurements.

Please note: All stated dimensions are approximate only. Particulars given are for general information only and do not constitute any representation on the part of the vendor or agent.