



SOLD

MOVE IN TODAY- NEWLY RENOVATED - RARE SINGLE - LEVEL VILLA - LARGE 116 SQ MTRS OF LIVING. LAST OPEN HOME SATURDAY OFFERS CLOSE 27TH - 9.30 TO 10 AM

Looks new - Feels new - Is new : This single-level villa is located on the east side of the M1, just north of Robina, making it an ideal property for upsizers or downsizers. The convenient location offers easy access to amenities and attractions such as Robina Town Centre, Pacific Fair, and the Gold Coast's best surfing beaches, all within a 10-minute drive. Public transport is also available right at your doorstep, eliminating the need for a car. Additionally, the property boasts excellent on-site management.

Key features include:

- * Gated secure community
- * Resort facilities - pool - spa - sauna - clubhouse - Parklands
- * Three oversized bedrooms with fans and built-in robes.
- * Two bathrooms, including an ensuite off the master bedroom.
- * A sizable kitchen with a spacious pantry, dishwasher, and ample cupboard space.
- * An open plan lounge/dining area that opens up to a private quiet N/E undercover entertaining area and spacious backyard.
- * Ideal for pets
- * Two car spaces - one single lock-up garage with internal access, and visitor parking.
- * Plenty of storage space.
- * Air conditioned

The complex also offers a range of resort-style facilities, including a large pool with a waterfall, secure gated access, a gym, a sauna, and a games/recreation room equipped with a kitchen for gatherings and parties.

The property is within walking distance of excellent private and public schools, shops, a tavern, McDonald's, a service station, a bottle shop, parklands, and a bus stop. Furthermore, with plans for the new Merrimac train station, commuting to Brisbane CBD or Brisbane International Airport

3 BED | 2 BATH | 2 CAR

PRICE:
\$746,900

OPEN FOR INSPECTION:
N/A

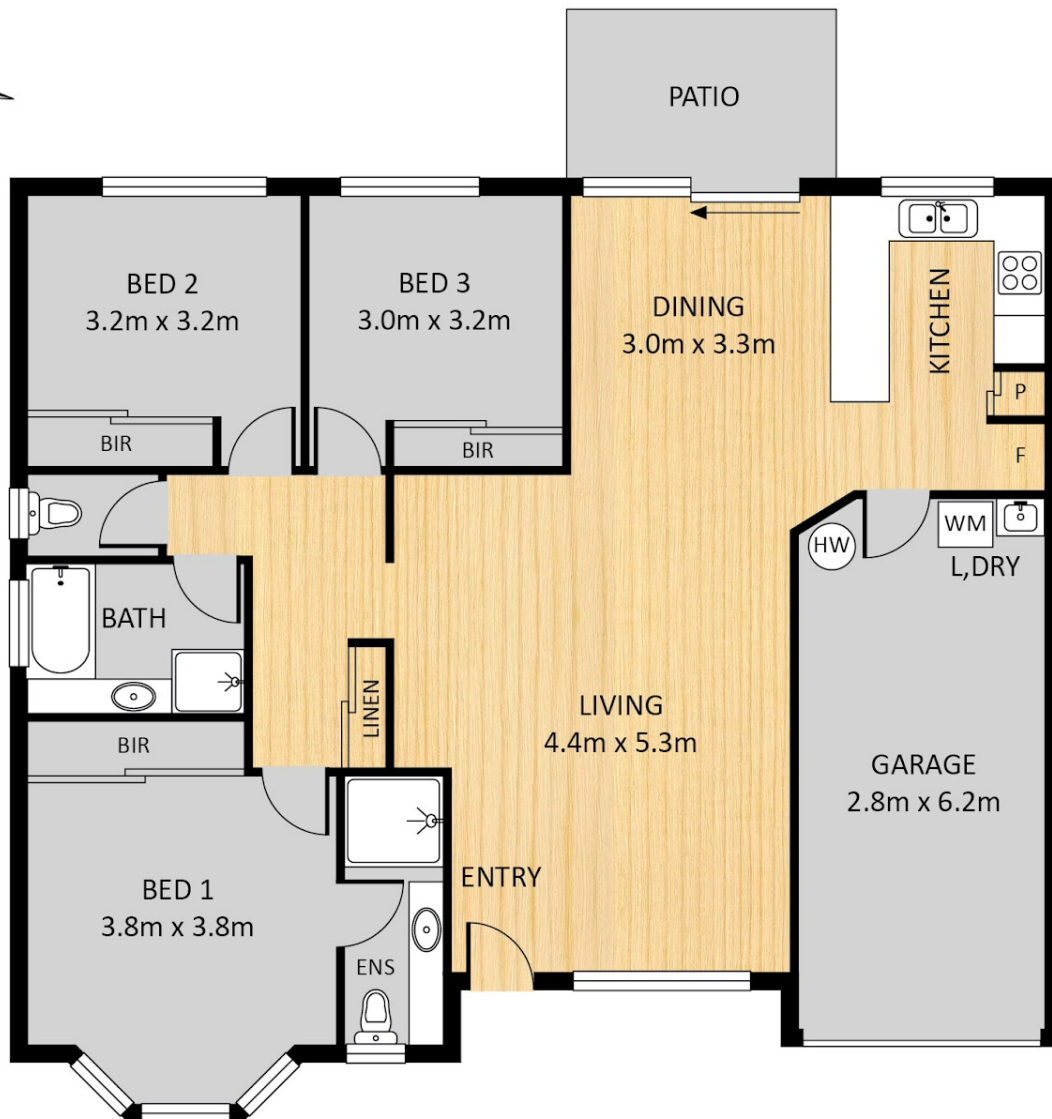
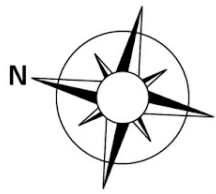


Gregg Hewitt
0413442229
gregg@atrealty.com.au
Gregg Hewitt

4/2-6 Ghilgal Road Merrimac



Total approx floor area 116m²



Disclaimer: Floor plan measurements are approximate and for illustrative purposes only.

Disclaimer: Please note this floor plan is for marketing purposes and is to be used as a guide only. All dimensions are estimates only and may not be exact measurements.

