



SOLD

RENOVATORS DELIGHT!

LOCATION! LOCATION! LOCATION!

Stuart Park is one of Darwin's up and coming suburbs, the first suburb from the City, located minutes from Stuart Park school and Darwin's Marina developments and the Darwin Wharf Precinct, the Convention Centre, a prime piece of real estate. All this at your doorstep in Stuart Park.

Situated in a small complex of only 6, this cosy townhouse has a very special private outdoor area, for that extra slice of alfresco living so very necessary and sought after in our hot tropical climate. The inside of the unit needs a little tender loving care, with a lick of paint and quick reno it will be like new!

The 2 bedrooms are located on level 1, both opening onto their own breezy balconies and the main bedroom is huge and even has a small office alcove. Both bedrooms have built in robes and air-conditioning for your comfort, or just leave the balcony doors open for those fresh clean breezes.

The corner kitchen is well located to the rear of the property and also needs some work. Other features include a second toilet and shower in the internal laundry downstairs. The floor features cool ceramic tiles throughout and a car-port will keep your car cool!!

Close to famous Parap or Mindil Beach markets, Yacht Club for sunset drinks or just down the highway to the sensational boardwalk cafes of Cullen Bay Marina - all these exciting venues are all at your fingertips! Darwin's future has never looked so prosperous - a future pot-of-gold for home owners or investors alike. Additional feature - Lifestyle living mere minutes to everywhere exciting in Darwin.

Pets allowed in complex upon body corporate approval.

Darwin City Council Rates : approx \$1800 per year

Body Corp Managers : Elite Strata Management

Body Corp Fees approx \$1200 per qtr

Currently tenanted (periodic lease) to the same tenant for many years.

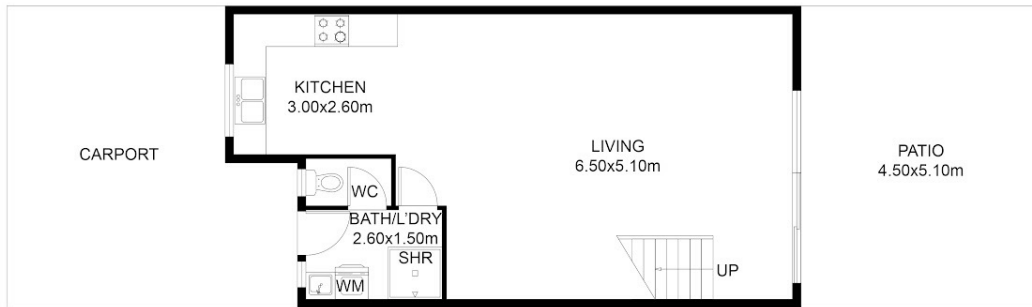
2 BED | 2 BATH | 1 CAR

PRICE:
\$342,500

OPEN FOR INSPECTION:
N/A



Nicole Wheeler
0417508800
nicolewheeler@atrealty.com.au
www.atrealty.com.au



GROUND FLOOR PLAN



FIRST FLOOR PLAN

This floor plan including furniture, fixture measurements and dimensions are approximate and for illustrative purposes only. @Realty gives no guarantee, warranty or representation as to the accuracy and layout. All enquiries must be directed to the agent, vendor or party representing this floor plan.

6/6 Henry Street Stuart Park

Disclaimer: Please note this floor plan is for marketing purposes and is to be used as a guide only. All dimensions are estimates only and may not be exact measurements.