

# SOLD

## EXECUTIVE RURAL RETREAT

This private executive retreat is the epitome of Hamptons elegance. Upon driving into the welcoming entrance, you are immediately immersed in the sheer appeal and scale of this stunning 5 bedroom family residence.

The large, open plan design includes stained polished floorboards that greets you upon entry. An outlook to the generous hardwood deck with views to the tropical pool and mountain views beyond, make this home an entertainer's dream.

The features of this stunning property include:-

- 8208 sqm block with fast access to M1 motorway
- Private road with no thoroughfare
- 5 spacious bedrooms all with dedicated sonos sound, televisions, fans and feature lighting.
- Dedicated Lounge and Dining Room with open Fireplace
- Hamptons Kitchen with butler's pantry, extensive cabinets and feature lighting
- Laundry with fold down Robyn Hood ironing board
- Family Room with Integrated Cabasse multimedia sound
- Ipad docking/controllers throughout to monitor sound/air conditioning, doorbell.
- 3 bathrooms. 1 with standalone Claw bath. TVs in bathrooms and toilet. WIFI controlled Heaters in Bathrooms
- Additional powder room
- Utility Room with Toilet, hand basin and additional washing machine provision
- Complete home freshly painted
- Solar Panels
- Solar hot water and on demand gas hot water
- 3 phase power
- New Ducted WIFI Controlled Air conditioning plus split systems
- Perimeter security cameras
- Remote control / wifi controllable electric gates
- Fully Insulated
- Dedicated pet area secured with pet house and self watering system

5 BED | 3 BATH | 15  
CAR

PRICE:  
\$2,300,000

OPEN FOR INSPECTION:  
N/A



**Darren Leigh**  
0422832537  
darren@atrealty.com.au  
[www.atrealty.com.au](http://www.atrealty.com.au)

Marketed by Darren Leigh

@realty

Tel: Darren 0422 832537

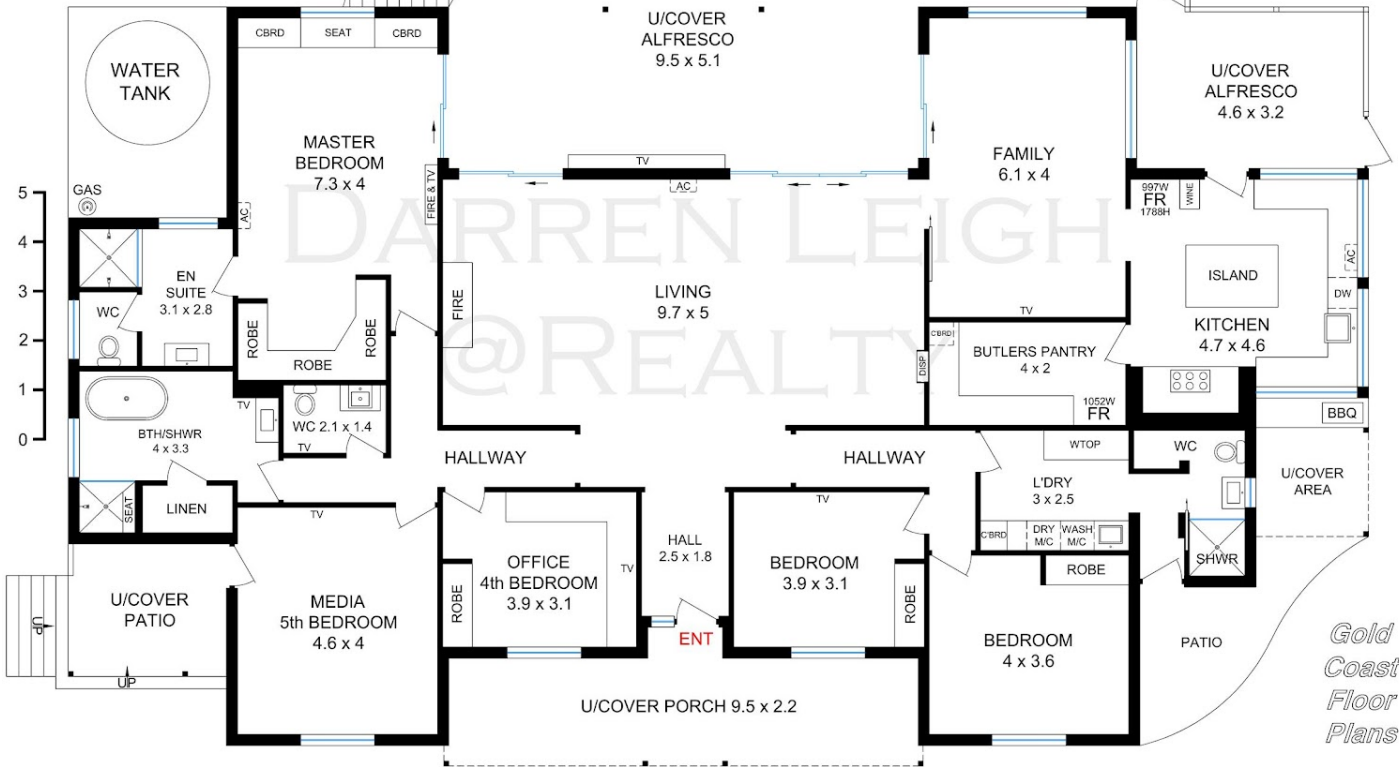


Please refer to floor plan 2 of 2 for area details

Waldheim

10 COOLIBAH ROAD,  
GAVEN 4211

Floor Plan 1 of 2



0435 282505 Scale in Meters. Dimensions are approximate. Whilst every care has been made we cannot guarantee its 100% accuracy and interested persons should rely on their own enquiries

Gold  
Coast  
Floor  
Plans

Disclaimer: Please note this floor plan is for marketing purposes and is to be used as a guide only. All dimensions are estimates only and may not be exact measurements.

Darren Leigh  
0422832537  
darren@atrealty.com.au  
www.atrealty.com.au

@realty