

**SOLD**

## MULTI-GENERATIONAL LIVING - OPSZ & WHSZ

OFFERS CLOSE BY 4PM TUESDAY 2/4/24 - \*The owner reserves the right to sell prior without notice\*

Contact Agent for price guide

Home Opens:

Wednesday 27/3/24 at 10.30am to 11am

Thursday 28/3/24 at 6pm to 6.30pm

Saturday 30/3/24 at 10.30am to 11am

Sunday 31/3/24 at 2pm to 2.30pm

Look no further! Lovingly maintained, this quality built, double storey residence offers easy multi-generational living with its unique & versatile floor plan offering 4 huge bedrooms with 3 bathrooms! Location wise, you'll be pressed to find better! Just minutes walk or drive to Oberthur Primary School & Willetton High School.

### UPSTAIRS FEATURES INCLUDE:

- King size master bedroom with the comfort of air conditioning or ceiling fan for those hot nights, large double windows overlooking the peaceful garden, two separate BIR's, ensuite with good size vanity, toilet & shower
- Bedrooms two & three are both queen size with BIR's & air conditioning
- Family bathroom in neutral tones with huge corner bath/shower, vanity & toilet
- Ducted evaporative air conditioning throughout upstairs

### DOWNSTAIRS FEATURES INCLUDE:

- Bedroom four is queen size with full height window. This would make a fabulous home office if not using as a bedroom.
- 3rd bathroom is compact but versatile, with shower, vanity & toilet
- High spec, designer kitchen that is sure to impress, with modern cabinetry including large pantry with pull out storage baskets, soft close drawers & stunning glass door display cabinets. Large fridge recess, microwave cabinet, SMEG chef's oven with 6 burner gas cooktop & electric oven, stainless steel splashback & rangehood. Dishwasher, double sink, stunning engineered black granite benchtops with breakfast bar.
- Open plan kitchen/dining/living room – a beautiful space with French doors opening out to the alfresco & pool area
- Living room – complete with stunning gas fire and ornamental mantel piece, also with French

4 BED | 3 BATH | 2 CAR

PRICE:

\$1,380,000

OPEN FOR INSPECTION:

N/A

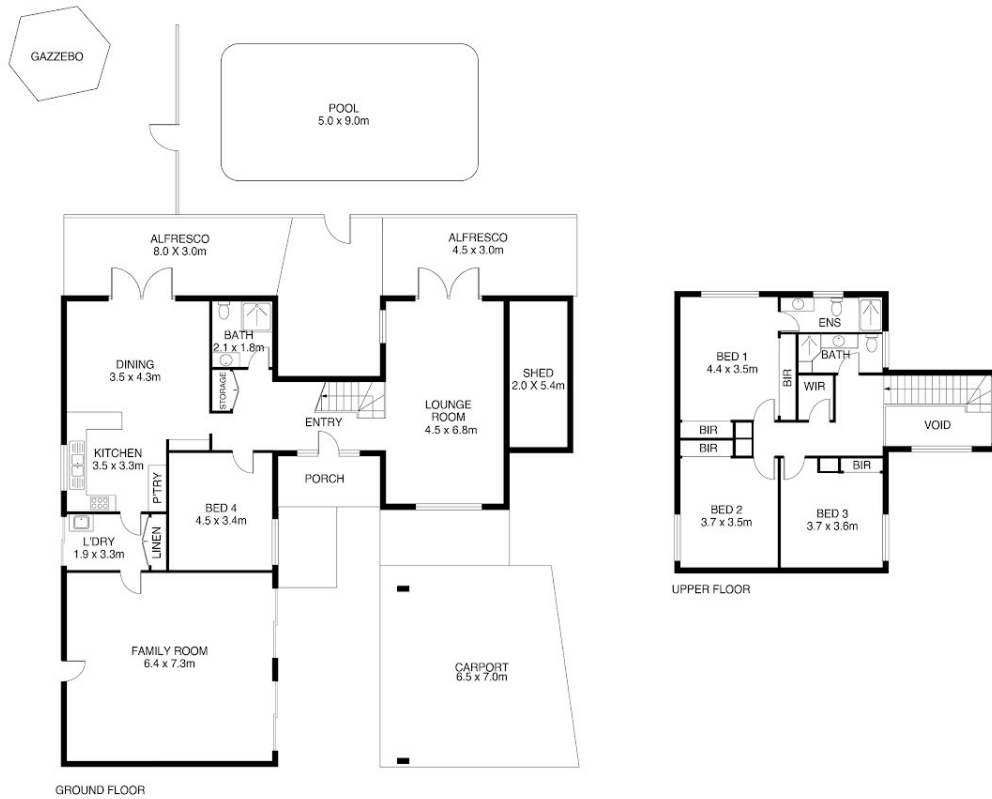


**Jill Groves | Chloe Leggett Team**

**0408765240**

jillgroves@atrealty.com.au

[www.atrealty.com.au](http://www.atrealty.com.au)



**@realty** 48 Nicholls Crescent, Bull Creek

Not to scale • All measurements are approximate • Drawn for presentation purposes only

Disclaimer: Please note this floor plan is for marketing purposes and is to be used as a guide only. All dimensions are estimates only and may not be exact measurements.