**SOLD**

CHARMING UNIT IN PRIME LOCALE

NO BODY CORPORATE FEES!

Nestled in a highly sought-after locale, this charming unit offers an outstanding opportunity for first-time buyers, young families, discerning downsizers, and savvy investors alike. With an inviting facade of rendered brick, this front unit is one of only two on the block, promising a serene living experience free of body corporate fees.

Step inside to discover a warm and welcoming interior adorned with floorboards throughout, creating a seamless flow from room to room. The three well-appointed bedrooms come complete with built-in robes, ensuring ample storage space. Natural light filters through roller shutters, marrying security with comfort.

The heart of the home is the kitchen, which is sure to delight any home chef with its Miele gas appliances, oven, and dishwasher. Entertaining is a breeze with an updated bathroom and a separate toilet for convenience.

Ducted heating throughout ensures your family's comfort during cooler months, while the rear pergola presents a perfect setting for alfresco dining or simply soaking up the sun. An additional room and carport enhance the appeal, offering extra space for a multitude of uses.

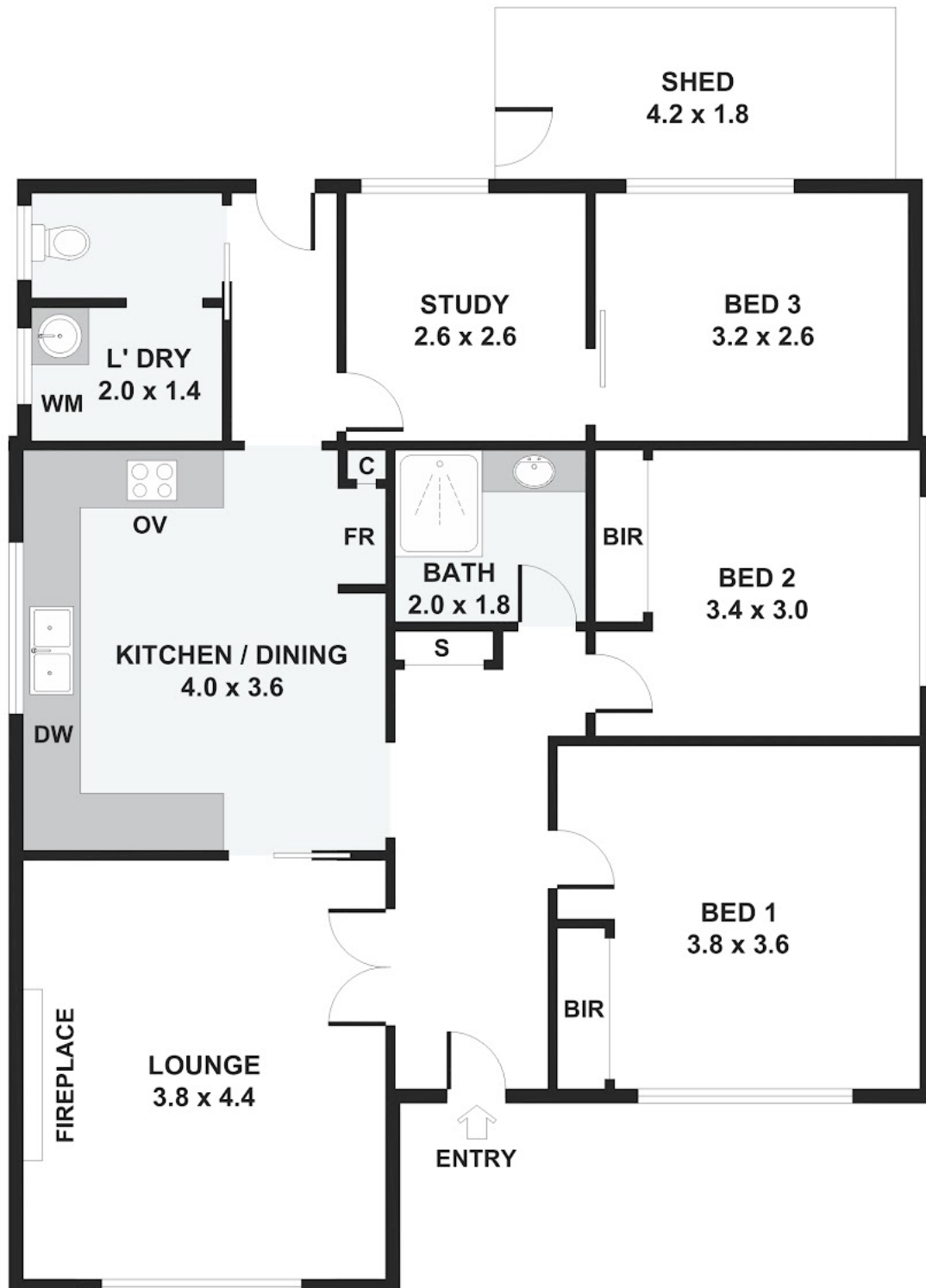
This unit is ideally positioned to embrace the vibrant lifestyle of Noble Park. With schools, shops, eateries, and transport links including Noble Park and Sandown Park train stations just a stone's throw away, everything you need is within easy reach. Situated on a generous plot of 261 square metres, this is an opportunity not to be missed.

For more information contact Bruce Ung Today!

Please note : Photo I.D. required at all inspections

3 BED | 1 BATH | 1 CAR**PRICE:**
\$600,000**OPEN FOR INSPECTION:**
N/A**Bruce Ung**
0422353767
bruceung@atrealty.com.au
www.atrealty.com.au

1/1071 Heatherton Road, Noble Park



Disclaimer: Please note this floor plan is for marketing purposes and is to be used as a guide only. All dimensions are estimates only and may not be exact measurements.

Please note: All stated dimensions are approximate only. Particulars given are for general information only and do not constitute any representation on the part of the vendor or agent.