

SOLD

IDEAL FAMILY HOME WITH SUNROOM!

Welcome to your dream home nestled in a highly sought-after location! This property offers everything your family needs for comfortable living and more. Let's explore the features that make this home truly exceptional:

- 3 Bedroom, 2 Bathroom Home
- Open Plan Living, Dining, and Kitchen Areas: Experience seamless living with open-plan design, connecting the living, dining, and kitchen areas, creating a warm and inviting space for family gatherings and entertaining.
- Ceiling Fans in Bedrooms: Stay cool and comfortable year-round with ceiling fans installed in the bedrooms, providing a refreshing breeze on warm summer days and nights.
- Split System Air Conditioning: Experience year-round comfort with split system AC.
- Sunroom for Entertaining: Relax and entertain in style in the sunroom, offering the perfect setting for enjoying morning coffee, hosting barbecue parties, or simply unwinding with a good book.
- Side Access and Storage Shed: Benefit from convenient side access, ideal for storing recreational vehicles, boats, or trailers, along with a storage shed providing ample space for all your storage needs.
- Carport: Park with ease under the carport, providing protection for your vehicle from the elements.

Location:

Situated just minutes away from Budgewoi Lake, shopping centers, medical facilities, and the M1 motorway, this home offers unparalleled convenience. Additionally, it's a short stroll to both primary and high schools, making it an ideal location for families with school-aged children.

Don't miss this opportunity to secure your family's future in this wonderful home! Contact Tom on 0414 002 753 or Brad on 0413 875 833 today to arrange a viewing and experience the lifestyle this property has to offer.

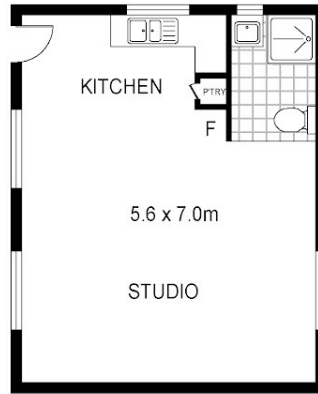
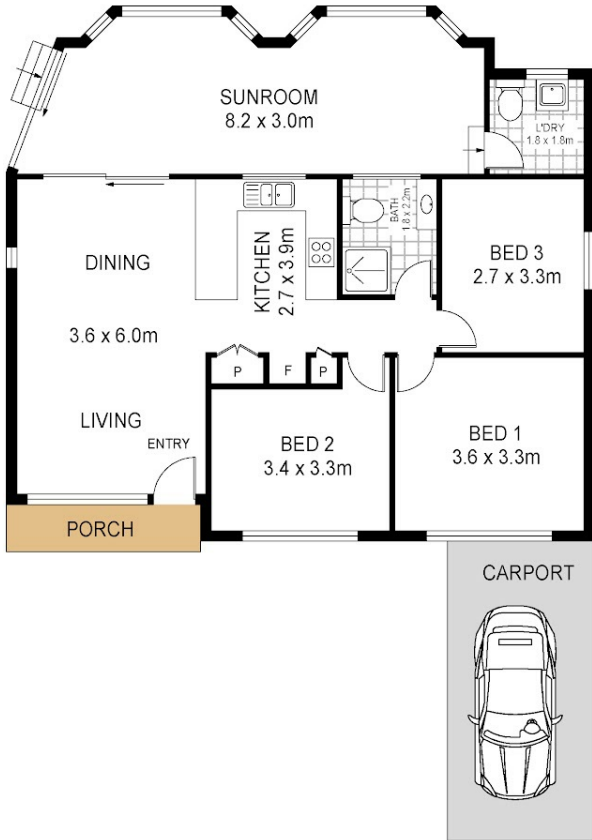
3 BED | 2 BATH | 3 CAR

PRICE:
\$665,000

OPEN FOR INSPECTION:
N/A



Brad Barker
0413875833
bradbarker@atrealty.com.au
www.atrealty.com.au



SITE PLAN : 575.4sqm



31 Kallaroo Road
San Remo



Total Internal Floor Area: 101 sqm
Total Internal Studio Area: 39 sqm

Scale in metres. Indicative only. Dimensions are approximate. All information contained herein is gathered from sources we believe to be reliable. However we cannot guarantee its accuracy and interested persons should rely on their own enquiries



Disclaimer: Please note this floor plan is for marketing purposes and is to be used as a guide only. All dimensions are estimates only and may not be exact measurements.