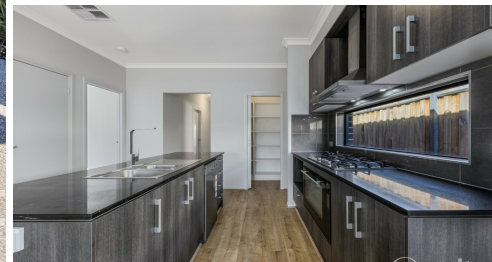


7 WHISPERING WAY CLYDE NORTH



FOR SALE

EXPLORE MODERN LIVING IN MERIDIAN ESTATE, CLYDE NORTH!

Discover modern living at 7 Whispering Way, Clyde North in the Meridian Estate! This stylish home features a master bedroom with ensuite, three additional bedrooms, and two living areas. The open-plan kitchen boasts gas cooking, stone benchtops, and a walk-in pantry. Outside, enjoy the alfresco area and low-maintenance yard. With nearby amenities and schools, plus high ceilings, cooling, and heating, this home offers comfort and convenience. Contact Tarun on 0468883302 to arrange an inspection today! Please note: While we strive for accuracy, buyers are encouraged to verify information independently. [Consumer Affairs Due Diligence Checklist] (<http://www.consumer.vic.gov.au/duediligencechecklist>)

4 BED | 2 BATH | 2 CAR

PRICE:

\$680,000 - \$720,000

OPEN FOR INSPECTION:

N/A



Tarun Sumrani

0468883302

tarun@atrealty.com.au

www.atrealty.com.au



7 Whispering Way, Clyde North

Disclaimer: Please note this floor plan is for marketing purposes and is to be used as a guide only. All dimensions are estimates only and may not be exact measurements.