

**SOLD**

## UNIQUE FULLY RENOVATED SPANISH STYLE HOME !!!

THIS PROPERTY WILL CAPTIVATE YOUR HEART AND SOUL !!!

Originally built in 1975, this substantial home has been lovingly restored To Enhance Its Original Spanish Style, and is the perfect combination of unique style and modern day living, brought together as one, with WOW factor overload !!!

From the moment you enter the exquisite arched walkway to the front door, you will be enchanted!

Fully renovated, this house features the following:

### DOWNSTAIRS:

- \*Double Storey height foyer entry featuring a massive 18 light Wrought Iron Chandelier
- \*Fully Air Conditioned Open plan dining/living area, with servery through to the kitchen
- \*The main lounge features soaring ceilings with exposed beams, enhanced by rustic wrought iron chandeliers, an open fire place, new high end vinyl flooring, and French doors opening out to a gorgeous porcelain tiled courtyard.
- \*A Brand New Kitchen, featuring up market Stainless Steel Appliances, including a gas cooktop/electric oven, dishwasher and pantry.
- \*The kitchen flows through to an Air conditioned second lounge area, perfect as a TV room or rumpus room for the children.
- \*Separate Laundry with door to the garage and backyard
- \*Single Lock Up Garage
- \*Fourth Bedroom/Office/Teenage retreat with its own separate entry to the house
- \*Brand new Two way bathroom

### UPSTAIRS:

- \*Air Conditioned Master suite, featuring a walk in robe, French doors opening out to a private balcony, and brand new Ensuite
- \*Two additional spacious bedrooms with ceiling fans
- \*Brand New Main Bathroom
- \*Brand new fourth "Bath House" , exquisitely styled with a large soaking bath - throw open the gorgeous French doors and soak up the peace and tranquility this ambient "escape" provides !!!

### BACKYARD:

- \*Private and fully fenced

4 BED | 4 BATH | 3 CAR

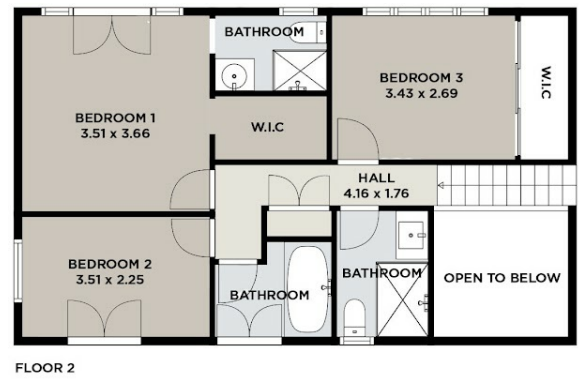
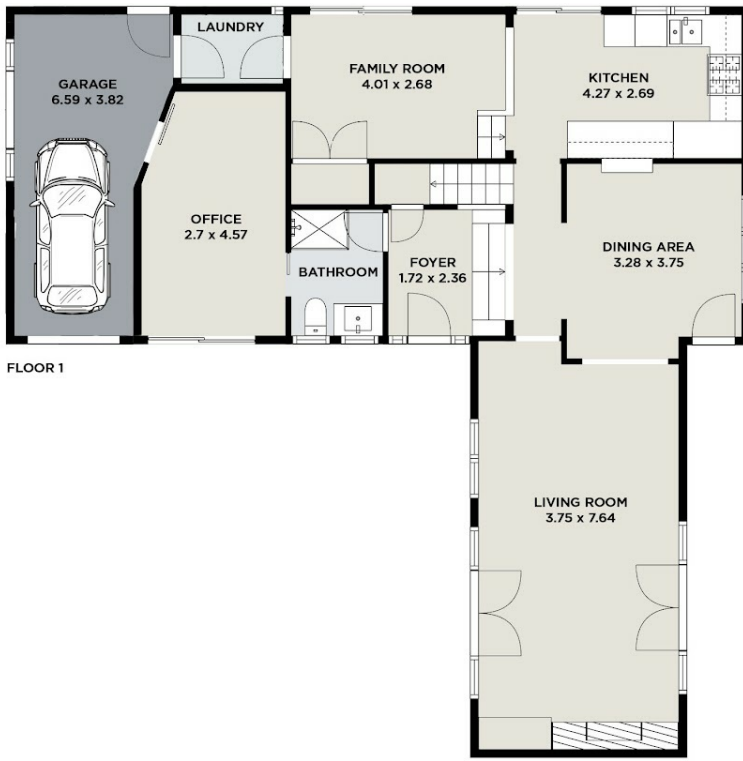
PRICE:  
\$610,000

OPEN FOR INSPECTION:  
N/A



**Jane Vella**  
**0449110979**

janevella@atrealty.com.au  
[www.atrealty.com.au](http://www.atrealty.com.au)



**Building size: 300m<sup>2</sup>**  
**Land size: 607m<sup>2</sup>**

SIZES AND DIMENSIONS ARE APPROXIMATE, ACTUAL MAY VARY. THIS PLAN IS FOR ILLUSTRATIVE PURPOSES ONLY AND SHOULD ONLY BE USED AS SUCH BY ANY PROSPECTIVE PURCHASER.

**25 Cook Street, West Gladstone**



Disclaimer: Please note this floor plan is for marketing purposes and is to be used as a guide only. All dimensions are estimates only and may not be exact measurements.

**Jane Vella**  
**0449110979**  
 janevella@atrealty.com.au  
[www.atrealty.com.au](http://www.atrealty.com.au)

