

**SOLD**

## THE PERFECT START IN THE HEART OF LIDCOMBE | QUALITY DOUBLE BRICK APARTMENT IN AN UNBEATABLE LOCATION

Located in the heart of the highly sought out suburb of Lidcombe will be this quality double brick, two bedroom apartment that is enviably positioned only a stones throw away from the heart of the thriving Lidcombe CBD that offers an incredibly convenient and connected lifestyle for you and your family.

Only moments away from your doorstep, you will find:

- Dining Precinct, Medical Services & Specialist Stores
- Lidcombe Shopping Centre
- Lidcombe Train Station
- Lidcombe Public School
- St Joachim's Catholic Primary School
- Dooley's Lidcombe Catholic Club
- Easy Access to Major Arterial Roads (A6, A44 & M4)

Offering impressive district views and a glimpse of the Sydney CBD, this solid two bedroom double brick apartment enjoys an expansive and generous floorplan that allows you and your family to live comfortably, has the ability to allow your family to grow further without concern for limitations of space whilst giving your family peace of mind in the quality of it's build.

Why you will love this home:

- Two Generously Sized Bedrooms with Built in Wardrobes
- East Facing & Spacious Open Plan Living that flows seamlessly to the Balcony
- Renovated Kitchen with Stone Benchtops, Quality Appliances and Ample Storage
- Intercom, Air-Conditioning and Internal Laundry
- Single Car Space

2 BED | 1 BATH | 1 CAR

PRICE:  
\$527,500

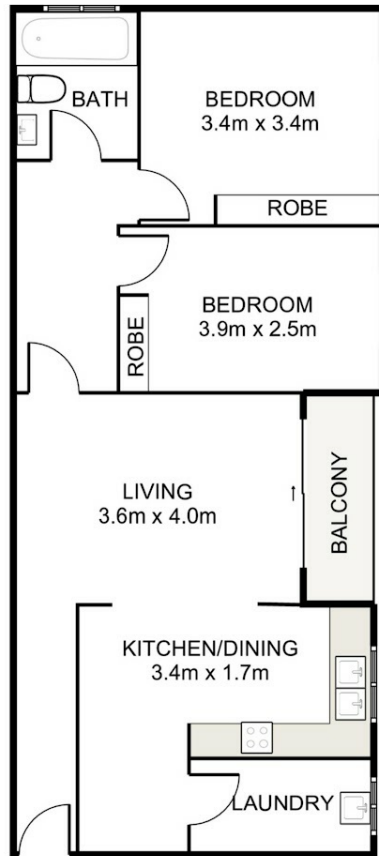
OPEN FOR INSPECTION:  
N/A



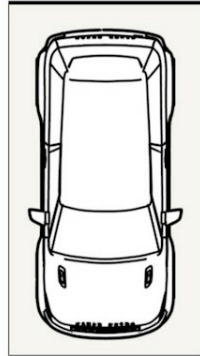
**Jason Nguyen**  
**0478684380**

[jnguyen@atrealty.com.au](mailto:jnguyen@atrealty.com.au)

[www.smythproperty.com.au](http://www.smythproperty.com.au)



KITCHEN/DINING  
3.4m x 1.7m



DISCLAIMER: Floorplans and sizes are indicative only. We cannot guarantee its accuracy and accept no responsibility for such. Interested persons should rely on their own enquiries.

Disclaimer: Please note this floor plan is for marketing purposes and is to be used as a guide only. All dimensions are estimates only and may not be exact measurements.