

1911 RUGBY ROAD, BEVENDALE, NSW, 2581



FOR SALE

“ LACHLAN RUN” 970 ACRES, ROLLING HILLS, RIVER FRONTAGE, ENORMOUS POTENTIAL, DAMS, DUAL ROAD FRONTAGE, 12 PARCELS.

A super exciting opportunity for you to own a large slice of The Southern Tablelands with 970 acres of sheep grazing country, direct river frontage to the Lachlan River, Dual Road frontage to Rugby & Bevendale Roads.

On the land stands the original family homestead which was built by the Dowling family in 1950, other improvements include a shearing shed & machinery shed.

The homestead is connected to power and is in good structural condition waiting for a new family to add their personal touch.

This fine rural property features marvellous rolling hills and beautiful valleys with some great elevated hilltops that offer amazing views of the distant mountains and the surrounding country landscape, zoned RU2, Separated into 11 with portions with lots of dams and fresh water around the property.

Simply a great family land holding whether you want to graze or just give your family a nice start in the country with a beautiful lifestyle and a to leave a legacy way into the future.

Located about 35 minutes to the township of Crookwell or Gunning About an hour from Goulburn and around 3 hours from Sydney.

For more information or to arrange a private inspection Call Elias Sleiman now on 0438184127

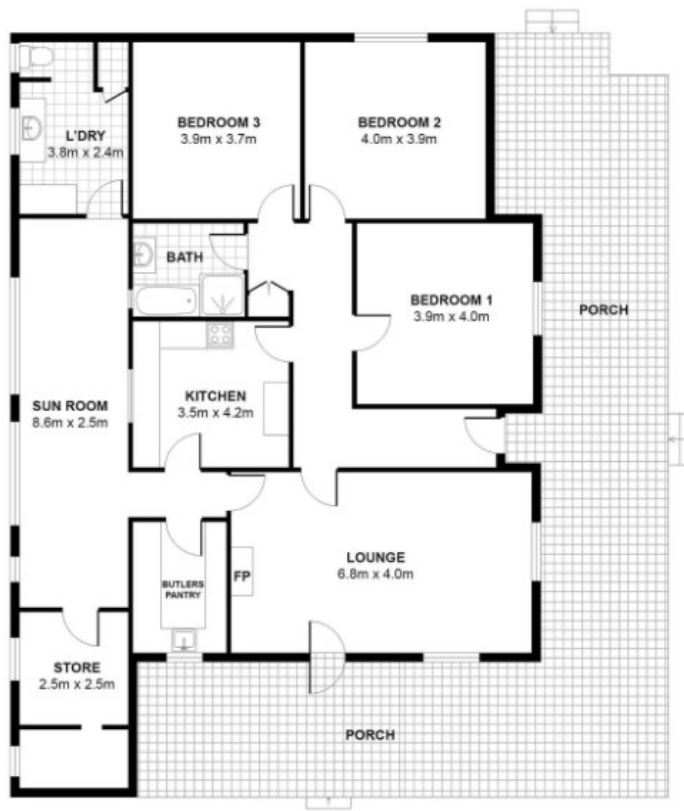
4 BED | 2 BATH | 4 CAR

PRICE:
\$2,900,000

OPEN FOR INSPECTION:
N/A



Elias Sleiman
0438184127
elias@atrealty.com.au
www.ruralnational.com.au



Disclaimer: Please note this floor plan is for marketing purposes and is to be used as a guide only. All dimensions are estimates only and may not be exact measurements.