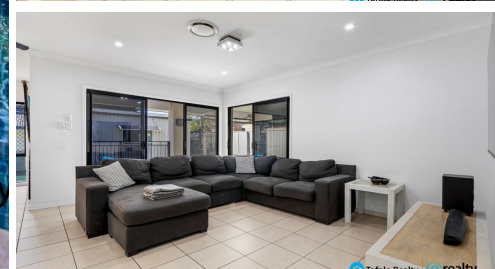


2 PELLITA COURT, VICTORIA POINT, QLD, 4165



SOLD

SOLD! LARGE FAMILY HOME WITH POOL & SHED!

SOLD!

Step into your dream home at 2 Pellita Court, Victoria Point! Tucked away in a tranquil cul-de-sac, this property offers a harmonious blend of comfort and convenience.

Boasting 5 bedrooms and 2 bathrooms, there's ample space for the whole family to thrive. The generous 1,058 m² flat block provides plenty of room for outdoor activities and relaxation.

But wait, there's more! Picture yourself hosting epic gatherings in your backyard oasis, complete with a fantastic BBQ fixture that comes with the home. And for your furry friends, there's ample space to roam and play.

But that's not all! There is a beautiful pool as well! Imagine having your own private retreat with a versatile pool house that can be transformed into a game room, gym, or guest house. It's the ultimate space for entertaining guests or unwinding after a long day.

Plus, don't overlook the massive shed offering enough car spaces for the entire family. Whether it's for storage or tinkering on projects, this shed has you covered.

Built in 2005, this meticulously maintained home is conveniently located near local shops, schools, and parks, making it an ideal retreat for families.

Seize this incredible opportunity! Contact us today to schedule a viewing and turn 2 Pellita Court into your forever home!

5 BED | 2 BATH | 5 CAR

PRICE:
\$1,100,000

OPEN FOR INSPECTION:
N/A



Ben Tafolo
0419260719
tafola@atrealty.com.au
tafalorealty.com.au



2 Pellita Court **VICTORIA POINT**

INT: 270m²
EXT: 105m²

5 | 2 | 5 | 375m² | 1058m²

All dimensions are approximate; they are subject to errors and inaccuracies and no liability will be accepted. Plans are shown for marketing purposes only.

Disclaimer: Please note this floor plan is for marketing purposes and is to be used as a guide only. All dimensions are estimates only and may not be exact measurements.