



SOLD

LOOKING TO DOWNSIZE! IN A FABULOUS OVER 50'S VILLAGE.

This newly designed Hamptons Home offers a relaxed and stylish lifestyle, for the fussiest of homeowners. With open plan living flowing out to the gorgeous alfresco area and garden – perfect for entertaining!

Virtually a Brand-New home on offer here. All the manuals and warranties have been put in a folder ready for the new lucky owner/s.

Latest state-of-the-art Dream Kitchen, brand new Asko appliances top of the range dishwasher, cooktop, oven and rangehood. Country style kitchen cupboards, draws and pantry. Plenty of bench space in charcoal/marble colour with stunning splash back. Corner pantry with power points. Breakfast bar.

The dining room is the hub of the home, with room for the whole family to visit or have friends over, sharing meals and making memories.

Beautiful wide timber click/clack flooring throughout the home in modern White Oak. Plantations shutters in white are the best quality PVC with wide surrounds.

Lounge room will fit all your furniture with plenty of room to move. Feature V-jay wall adds to the ambience. Mounted flat screen LG smart tv 75" included.

Everything has been done to the highest level by professionals and carefully monitored by the owners – as they did do everything planning on this being their forever home. However, North Qld is calling them back to be near family.

Oh! the Bathroom – is simply stunning and brand new as well.

Beautiful vanity and mirror with feature behind lighting. Shower screen with two way sliding doors making the shower easily accessible. Top quality fittings all new Shower Head and Vanity "Who" brand. Huge walk-in linen cupboard – linen lovers will be impressed no end.

Storage cupboard in hallway. All doors are new v-jays and a barn door to the bathroom adds character, just another touch of quality and style.

Main bedroom has built-ins fitted out, reverse cycle air conditioning (Haier), and ceiling fan.

Beautiful bedside pendant lights.

Second bedroom built-ins and ceiling fan can fit a queen size bed.

Completely new electrical wiring, Light Fittings, PowerPoints (4 socket - black) and black Ceiling Fans throughout the whole house.

Newly painted throughout to complete the major make over – renovation.

Outside

New awnings front windows, side window and back entertainment area.

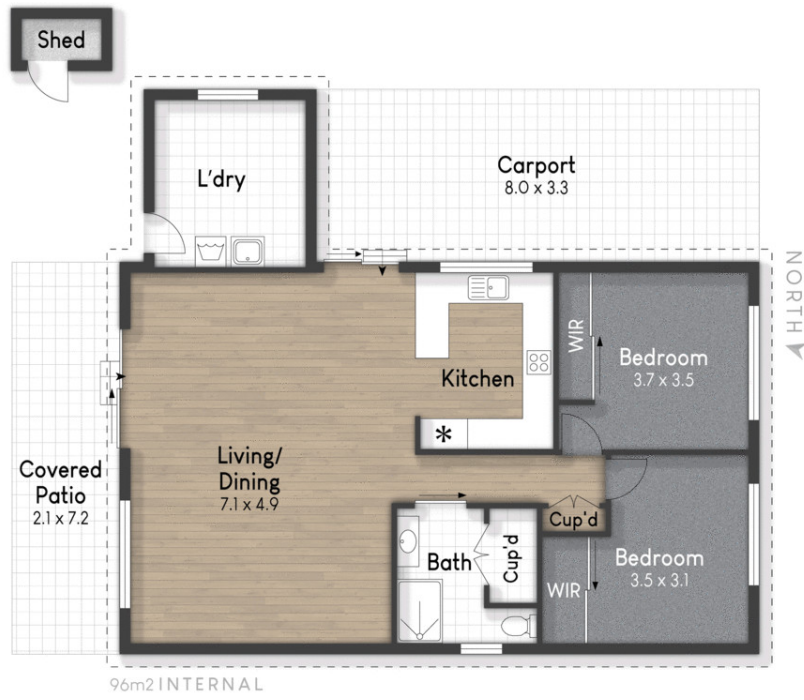
2 BED | 1 BATH | 2 CAR

PRICE:
\$650,000

OPEN FOR INSPECTION:
N/A



Kerrie Duval
0400843888
kez@atrealty.com.au
www.atrealty.com.au



open.view.com

@realty

Kerrie Duval
0400 843 888

129/34 Monarch Drive, Kingscliff
Internal: 96 m² | External: 41 m² | Approx Total: 137 m²

Plans shown are only indicative of layout. Dimensions are approximate.

Disclaimer: Please note this floor plan is for marketing purposes and is to be used as a guide only. All dimensions are estimates only and may not be exact measurements.

Kerrie Duval
0400843888
kez@atrealty.com.au
www.atrealty.com.au

@realty