

SOLD

LUXURY LIVING AT ATHENA RESIDENCES

Welcome to your dream waterfront apartment in the peaceful and luxurious community of Hope Island, QLD. This new furnished 2 bedroom, 2 bathroom apartment, and secure underground one car parking is the epitome of modern living.

As you enter this exquisite apartment, you will be immediately struck by the abundance of natural light that fills the spacious open plan living and dining area. With ducted cooling throughout the apartment, you can enjoy year-round comfort in this idyllic location.

This unit is located at level 2 boasts a generous 104 square meters of living space. Integrated laundry with clothes dryer in the storage area. The modern kitchen is equipped with stone benchtops and modern tapware, fridge, microwave oven, and dishwasher add convenience to your everyday life.

The bedrooms are spacious and feature built-in wardrobes, offering ample storage space for all your belongings. The balcony provides you a seating area and pool view. The master bedroom also has access to the balcony, providing a peaceful retreat where you can enjoy your morning coffee or evening glass of wine.

But the real highlight of this property is the outdoor features such as:

- Resort style Zen garden, pool, sauna & BBQ facilities (under construction)
- State-of-the-art gymnasium
- Yoga/Pilates room, and theatre room
- Children's indoor play area
- Business lounge with private offices and boardroom facilities
- Security access to all floor levels
- Access to walkway to canal waterfront boardwalk
- Close to shopping centres, golf courses, cafes, and restaurants
- Pet friendly
- Low Body Corporate fee
- On-site property manager
- Coombah State School and Helensvale State High, School Catchments

The community of Hope Island is known for its luxurious lifestyle and this Athena Residences

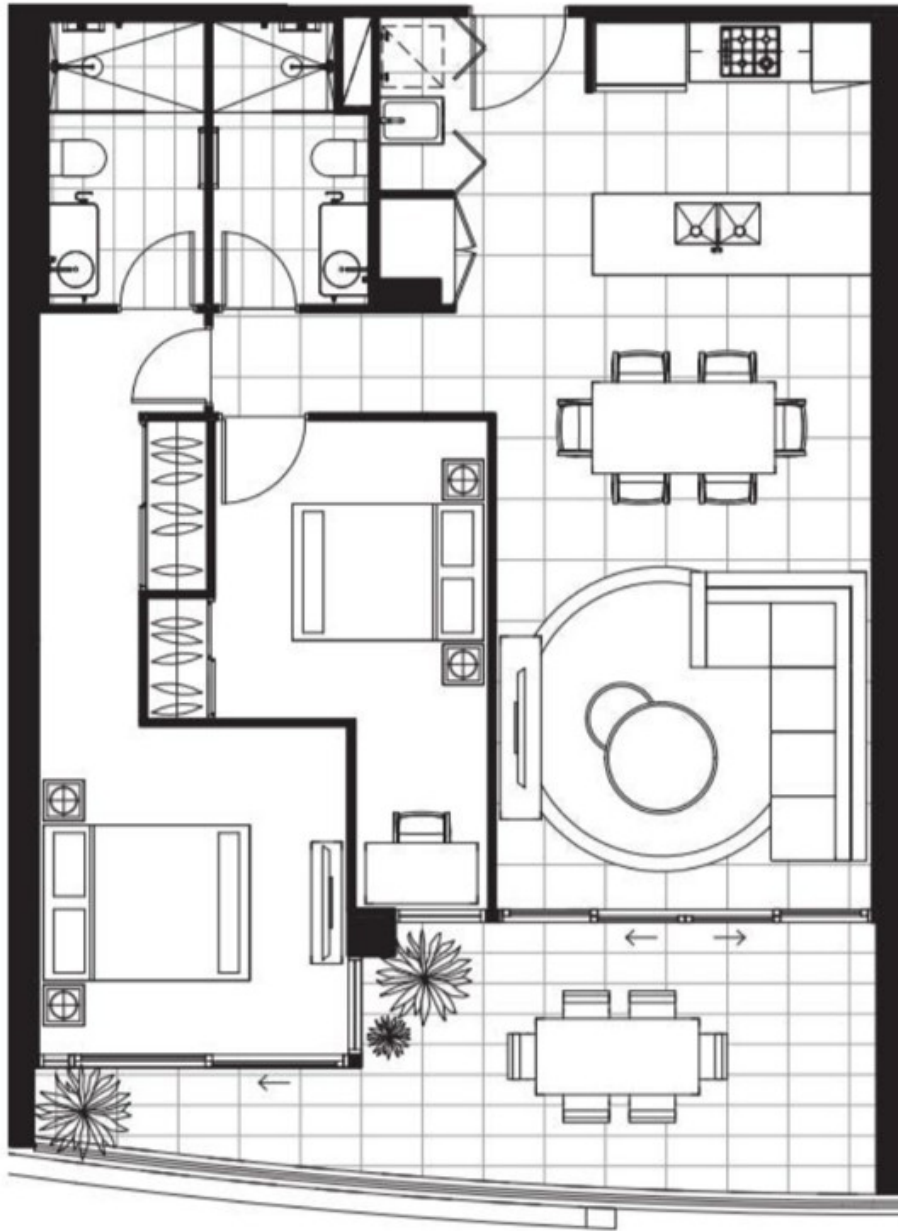
2 BED | 2 BATH | 1 CAR

PRICE:
\$620,000

OPEN FOR INSPECTION:
N/A



John Yii
0420745505
johnyii@atrealty.com.au
www.atrealty.com.au



0 0.5 1 2m

Disclaimer: Please note this floor plan is for marketing purposes and is to be used as a guide only. All dimensions are estimates only and may not be exact measurements.