



**SOLD**

## STUNNING 5 BEDROOM QUEENSLANDER WITH GOLD COAST AND MOUNTAIN RANGE VIEWS ON A 1019M2 USABLE BLOCK

Be ready to have your breath taken away by this charming Queenslander with well-established tropical gardens and views to both the Gold Coast and Beechmont. From the moment you step inside you are drawn in by the warmth and charm of this lovingly preserved, modern day Queenslander.

The timeless elegance of this home is a precise blend of old and new with many period features such as timber fretwork, tongue and groove internal linings, polished timber flooring, stained glass windows, pressed metal ceilings, French doors and a clawfoot bath but with all the trappings of the modern age.

The large, fixed pane window is an ever-changing feature with stunning views across the Mountain range to Beechmont, the Gold Coast and looks over your very spacious back deck where you can sit, watch and listen to the wonderful bird life whilst the kids run and play in the fully fenced, usable backyard.

This home features 5 bedrooms with a centrally placed living area which flows seamlessly, giving you plenty of room to entertain or enjoy your own space by the fireplace. Downstairs boasts 2 large bedrooms, a main bathroom and laundry which could easily be converted into dual living if required.

Enjoy the benefits of living on our beautiful Mountain in this very stylish, character filled home.

### UPSTAIRS

Open plan living, kitchen, dining.

3 Bedrooms upstairs, all with ceiling fans, main with ensuite and walk in robe. 2 Bedrooms with ocean views

Solid timber flooring throughout

Country style kitchen with a fixed pane window with views to the Gold Coast and Beechmont

Smeg 5 burner gas cooker

Tongue & Groove vj panelling throughout.

Extra High ceilings (12ft)

Stained glass windows

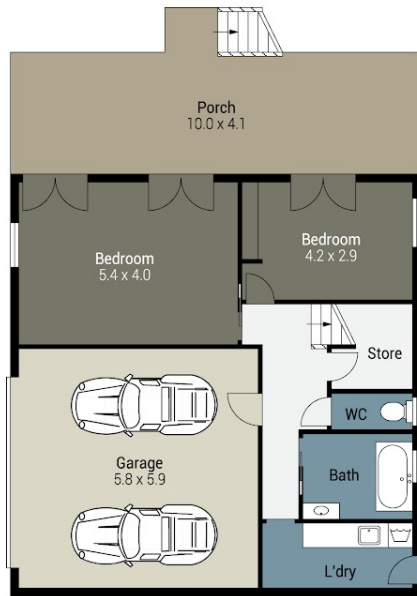
**5 BED | 2 BATH | 2 CAR**

**PRICE:**  
\$1,195,000

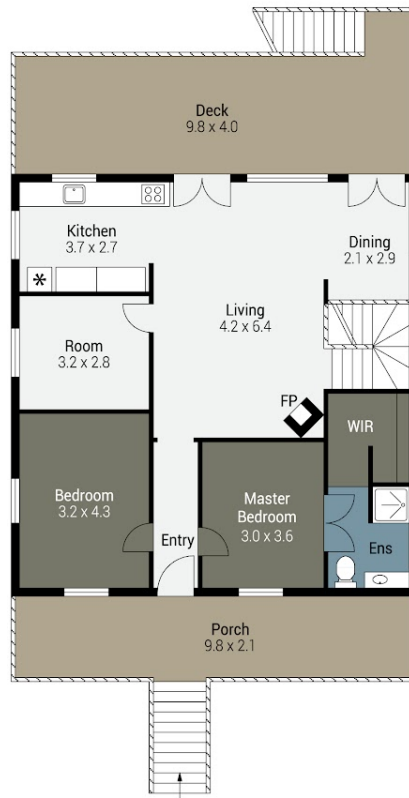
**OPEN FOR INSPECTION:**  
N/A



**Karin Smith**  
**0403012639**  
karin.smith@atrealty.com.au  
[www.atrealty.com.au](http://www.atrealty.com.au)



Ground Floor



First Floor

9 Ocean View Parade , Mount Tamborine

Internal: 210m<sup>2</sup> | External: 80m<sup>2</sup> | Total: 290m<sup>2</sup>

Bed - 4 | Bath - 2 | Car - 2

Plans shown are only indicative of layout. Dimensions are approximate.

Disclaimer: Please note this floor plan is for marketing purposes and is to be used as a guide only. All dimensions are estimates only and may not be exact measurements.