



FOR LEASE

NEAR-NEW FAMILY HOME IN COLLINGWOOD PARK

Welcome to your dream home, located in the highly sought after Woodlinks Village estate, surrounded by parklands, shopping centres, schools and a vibrant growing community, you'll never have to travel far for anything.

Featuring stunning 4-bedrooms, including a generous master bedroom with ensuite and walk through robe. The living area is made for easy entertaining with a gourmet kitchen flowing into the dining and family rooms and the butler's pantry features a servery bench opening up onto the Alfresco. The design is family friendly and features a separate rumpus room, so everyone has their own space. This home will truly impress you with its space and style, it could be all yours call home

As you pull up to the property, you will be immediately impressed by its striking façade and well-manicured front yard. You'll have plenty of space to park your vehicles with a double carport and secure parking in the remote garage. The land size of 400 square meters also means low maintenance and more time for you to enjoy the things that matter. The house also has all the modern features you could ask for, including broadband internet, built-in wardrobes, and air conditioning. You'll never have to worry about feeling uncomfortable in the harsh Queensland weather with the cooling and heating system in place.

Some of the key property features include:

- Master bedroom with a luxurious ensuite bathroom, air con and a walk-in wardrobe.
- Three other bedrooms are also generously sized.
- Modern kitchen with a dishwasher, butler's pantry, and ample storage space
- Double lock-up garage with a built in laundry and internal access
- Spacious open-plan living area with A/C
- Media room for family entertainment
- Split cycle air-conditioners & ceiling fans
- LED down lights
- Stone bench tops & European appliances
- High ceilings

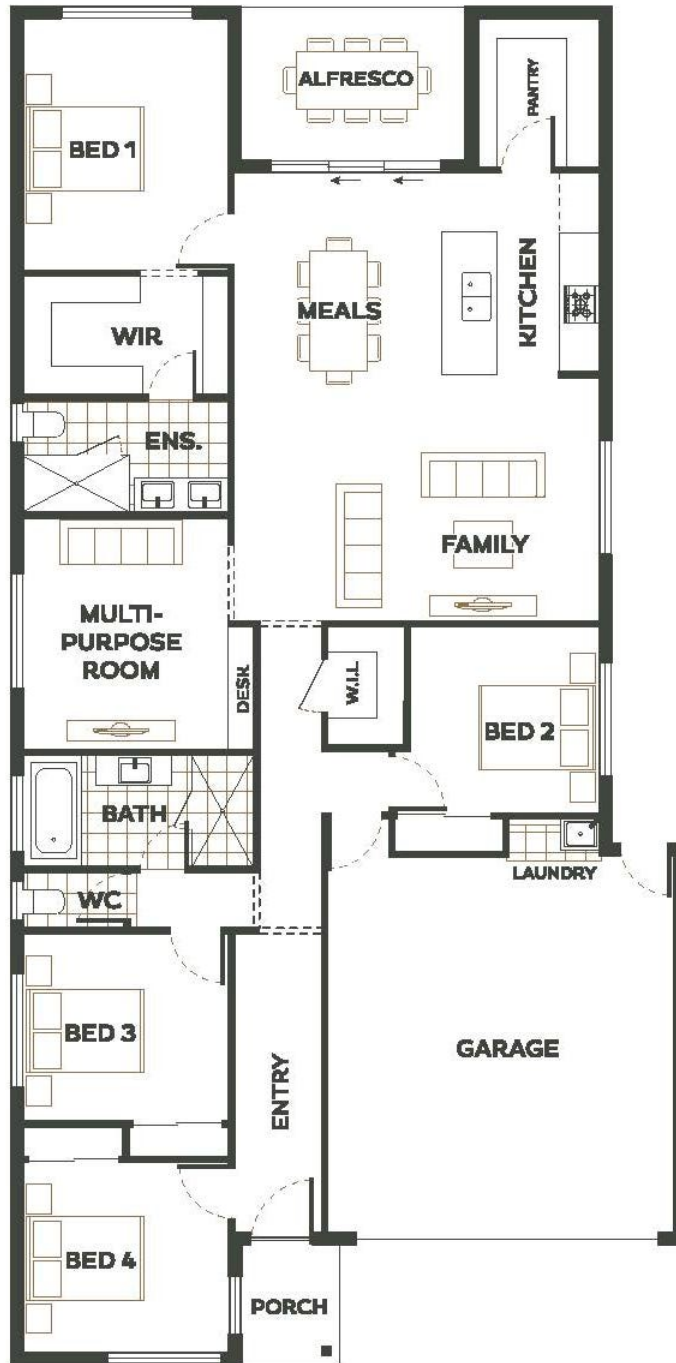
4 BED | 2 BATH | 2 CAR

PRICE:
\$625 per week

OPEN FOR INSPECTION:
N/A



Mohammad Sahadat
0430078532
mohammad@atrealty.com.au
www.atrealty.com.au



Disclaimer: Please note this floor plan is for marketing purposes and is to be used as a guide only. All dimensions are estimates only and may not be exact measurements.