



**SOLD**

## TOTAL CONVENIENCE ON ALMOST HALF AN ACRE!

INSPECTIONS BY APPOINTMENT ONLY. ENQUIRE NOW TO ARRANGE YOURS!

This expansive property on 1968m<sup>2</sup> is perfect for large or growing families seeking a blend of space, convenience, and potential. Located just a stone's throw from Mount Evelyn IGA, Wray Crescent shops, cafes, and restaurants, everything you need is within easy reach. The nearby lane way provides a shortcut to these amenities, making everyday errands a breeze. For outdoor enthusiasts, the Mount Evelyn Aqueduct Walk is only a few hundred meters away, offering scenic walks and rides to destinations like Lilydale, Silvan Dam, and the popular Warburton Rail Trail.

The main residence boasts five bedrooms, including a master suite with a walk-in robe, full ensuite, and direct access to the outdoor spa. The remaining four bedrooms all feature built-in robes, with one currently utilized as a study that can easily be converted back into a bedroom.

The formal dining area overlooks a sunken lounge, complete with a cozy wood fireplace, providing a perfect space for family gatherings. The heart of the home is its huge kitchen, equipped with expansive benchtops, a breakfast bar, and a walk-in pantry. Adjacent to the kitchen is a spacious meals area, capable of accommodating a plus-sized dining table, and offering access via sliding doors to a private patio, ideal for outdoor entertaining. The massive rumpus room, complete with a bar, looks out onto the impressive 50,000L solar-heated pool, making it a perfect spot for both relaxation and recreation.

Additional features of the property include a bungalow, ideal for guest accommodation, a home office, or a teenager's retreat. Parking is ample with a single lock-up garage with a workshop, a double carport, and two driveways providing plenty of off-street parking. Inside, the cathedral ceiling with exposed beams enhances the sense of space, complemented by gas ducted heating and multiple split system air conditioners. The home also includes a large laundry room, solar panels, and abundant garden shedding, while still offering plenty of garden space for green thumbs.

The location is within the catchment zones for Mount Evelyn Primary School and Yarra Hills Secondary College, and offers easy access to bus services. It's only an 11-minute drive to

6 BED | 3 BATH | 3 CAR

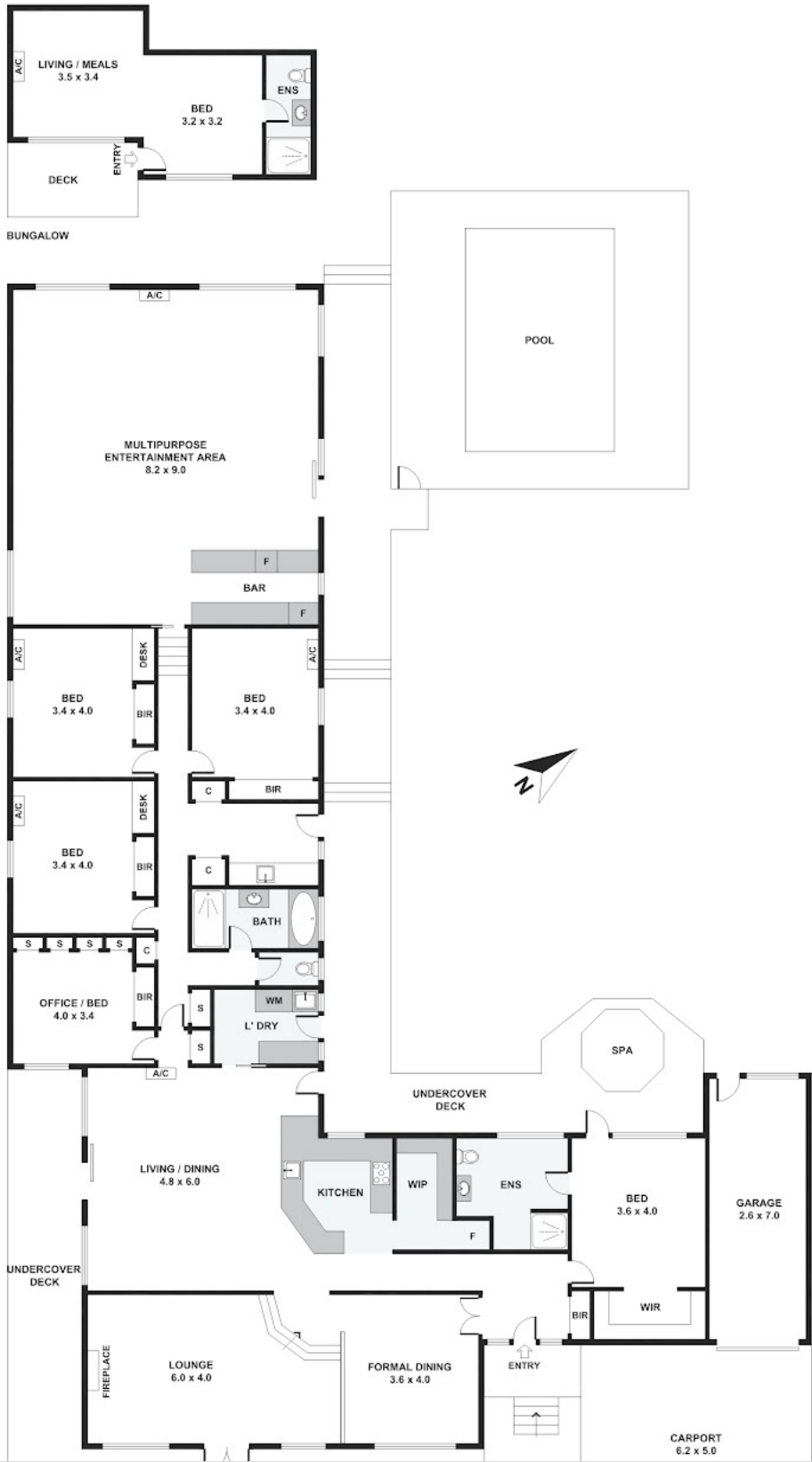
PRICE:  
\$960,000

OPEN FOR INSPECTION:  
N/A



**Scott Collins**  
**0499005265**  
scottcollins@atrealty.com.au  
scottcollins.com

# 13 View Street, Mount Evelyn



Disclaimer: Please note this floor plan is for marketing purposes and is to be used as a guide only. All dimensions are estimates only and may not be exact measurements.