



FOR SALE

MODERN 3-BEDROOM HOME WITH A STUDY!

INSPECTIONS BY APPOINTMENT ONLY. ENQUIRE NOW TO MAKE YOURS!

Open Plan Design and Spacious Lower Level: Step into the expansive lower level adorned with inviting timber floorboards. This level encompasses a carpeted master suite with a walk-in robe and a semi ensuite, conveniently accessible from the main living area. A dedicated study provides the perfect space for work or creative endeavours. Pleasing neutral tones grace the living and dining area, complementing the contemporary feel. Sliding doors seamlessly connect the indoors to your own courtyard, ideal for entertaining. Beyond lies a pergola and patio area, extending the living space outdoors.

Thoughtfully Designed Kitchen: The kitchen boasts stone benchtops, floor tiles, glass splashbacks, and stainless steel appliances. Ample cupboard space and a large window overlooking the rear courtyard enhance the practicality and appeal of this space.

Upstairs Sanctuary: Ascend the stairs to find two carpeted bedrooms, each equipped with a built-in robe and a split system air conditioner. These rooms are serviced by a family bathroom, ensuring comfort and convenience for all occupants.

Convenient Location: Situated just a short distance from Harrisfield and Noble Park primary schools, Noble Park Secondary College, local shops, and public transport, this home offers convenience at your doorstep. Additionally, it includes a single lock-up garage for secure parking.

Don't Miss Out: Whether you're a growing family, first home buyer, downsizer, or investor, this property ticks all the boxes. Contact us today to arrange a viewing and make this house your home!

3 BED | 2 BATH | 1 CAR

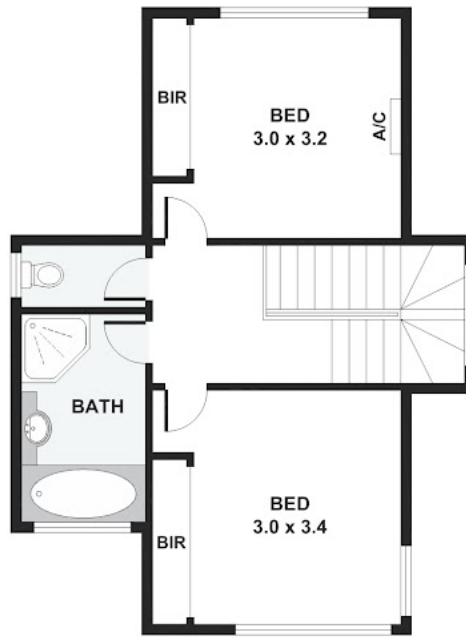
PRICE:
\$669,950

OPEN FOR INSPECTION:
N/A

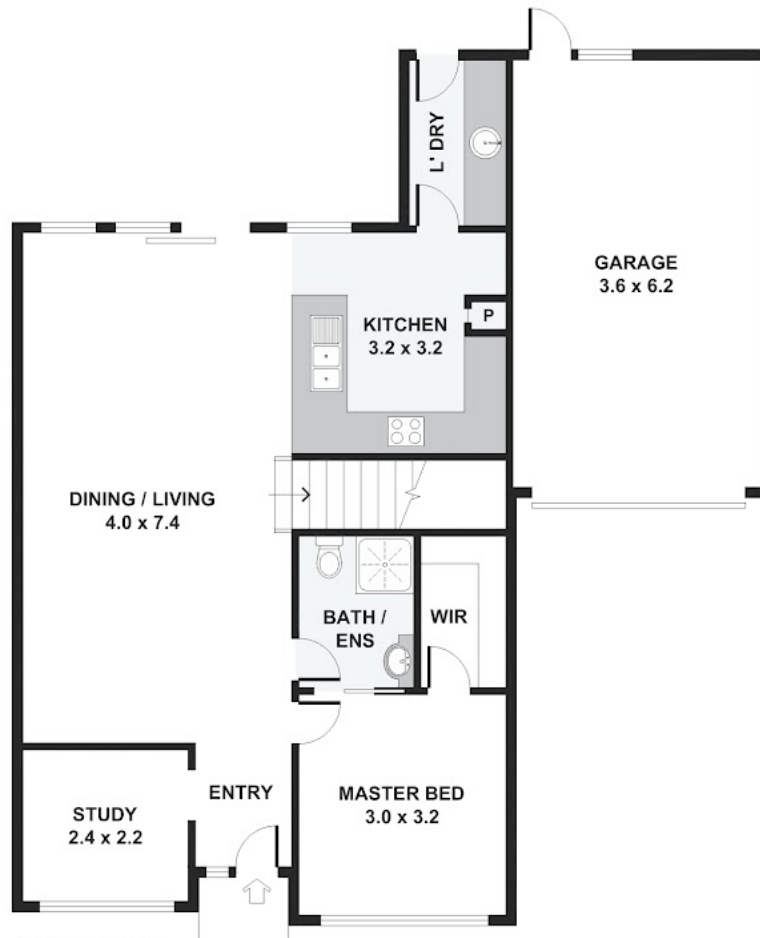


Scott Collins
0499005265
scottcollins@atrealty.com.au
scottcollins.com

2/3 Nockolds Crescent, Noble Park



FIRST FLOOR



Disclaimer: Please note this floor plan is for marketing purposes and is to be used as a guide only. All dimensions are estimates only and may not be exact measurements.