



**SOLD**

## VIEWS VIEWS VIEWS!

Relax at your very own 'Sunset Bar' and enjoy the amazing views of the Broadwater, Surfers Paradise skyline, mountains, local parklands, sunrises, sunsets, fireworks from Labrador to Broadbeach, rainbows and storms!

The Coastal Cool design scheme of the Hampton style imbues every corner of this luxurious apartment. Perfect for those with a taste for timeless elegance, it offers breath-taking views of both hinterland serenity and city lights, ensuring privacy and tranquillity from the lounge to the master bedroom suite and balcony.

Catering to couples seeking a twin master bedroom setup, complete with spacious walk-in robes and private ensuite, or families desiring proximity, this apartment provides versatility. Should the need arise for separate bedrooms, the layout easily accommodates this preference without hassle or significant expense.

The kitchen, boasting top-tier finishes and state-of-the-art appliances, seamlessly connects to the expansive living and dining area, leading out to a generous 15 sqm balcony for year-round enjoyment. A dedicated study, concealed by sliding doors, offers an ideal workspace or personal retreat.

Highlighted features include:

- Twin master suite with balcony access and stunning views
- Separate office space
- Spacious master with deluxe ensuite and walk-in robe
- Ducted air conditioning with zone control and ceiling fans
- Impressive chef's kitchen

**2 BED | 2 BATH | 1 CAR**

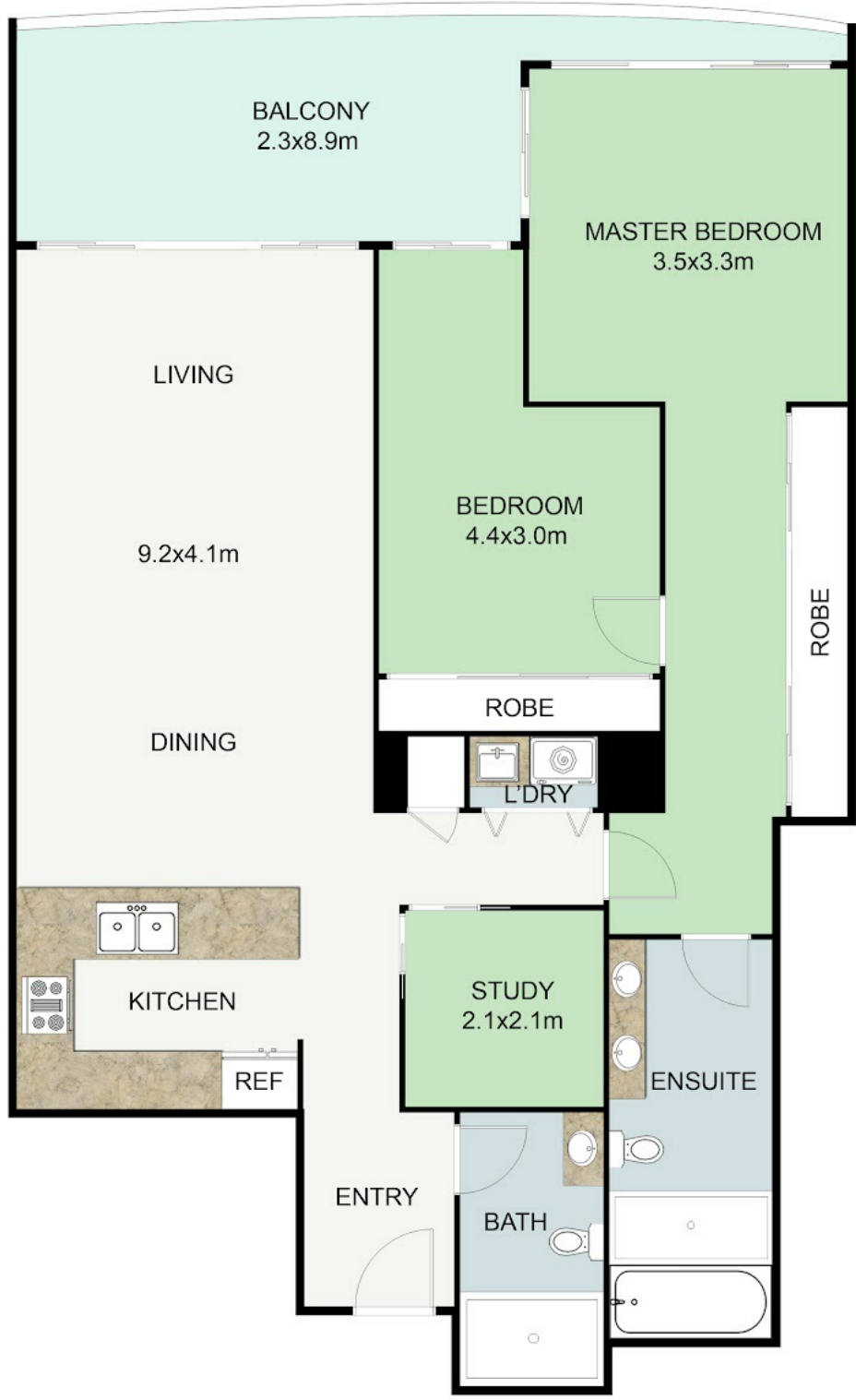
**PRICE:**  
\$710,000

**OPEN FOR INSPECTION:**  
N/A



**Tony Brown**  
**0418961500**  
tonybrown@atrealty.com.au  
[www.atrealty.com.au](http://www.atrealty.com.au)

CONTACT:  
**TONY BROWN**  
tonybrown@realty.com.au  
0418 961 500  
**@realty**



Disclaimer: Please note this floor plan is for marketing purposes and is to be used as a guide only. All dimensions are estimates only and may not be exact measurements.

The floorplan and site plan are indicative only and not to scale, all measurements indicated may not be accurate. All buyers must do their own investigations into the accuracy of these plans

**Tony Brown**  
0418961500  
tonybrown@atrealty.com.au  
[www.atrealty.com.au](http://www.atrealty.com.au)

