

SOLD

GREAT FOR INVESTMENT CURRENTLY LEASED AT \$620PW

Kathy Lombardo of @realty is proud to present this immaculate 2-bedroom apartment in the heart of Liverpool CBD. This great opportunity for first home buyer or investor with great tenants who would like to stay.

Walking distance to Liverpool Westfields and close to Liverpool Public and Private Hospital.

- 2 bedrooms with built in cupboards to both
- Open plan lounge, dining & kitchen flowing with natural light
- Kitchen with Gas cook top and ample cupboard space, Dishwasher
- Main bathroom with a large shower
- Powder room
- Internal Laundry
- Large balcony and car space
- Located on level 2
- Currently leased to great tenants at \$620pw

Don't miss this opportunity to make this apartment yours! Contact Kathy 0478 240 240 today to schedule a viewing and see for yourself why this is the perfect place to call home.

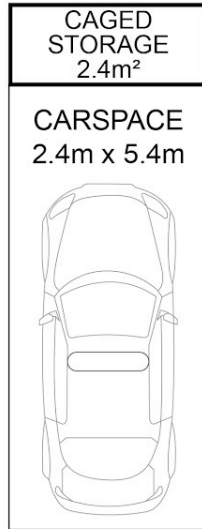
2 BED | 2 BATH | 1 CAR

PRICE:
\$525,000

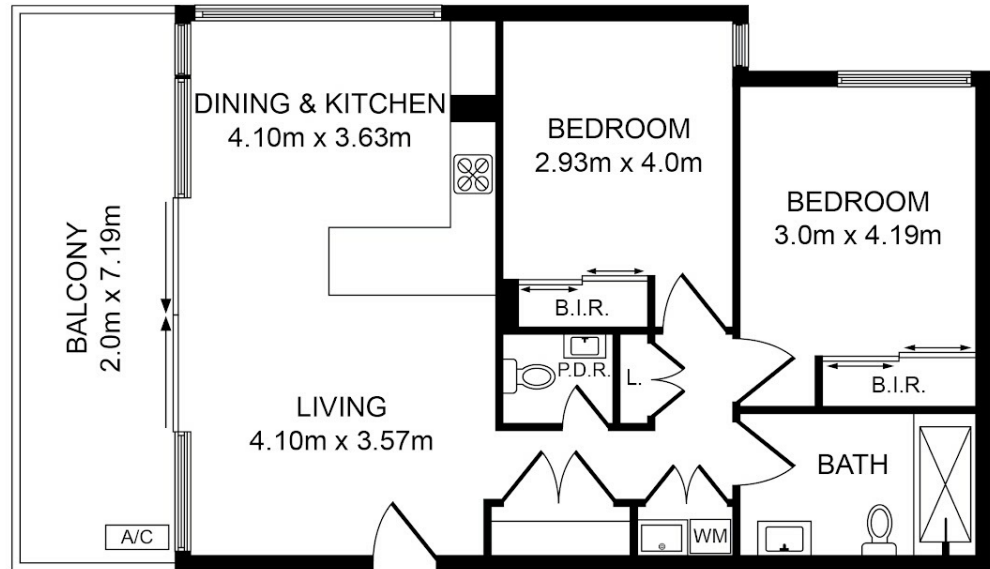
OPEN FOR INSPECTION:
N/A



Kathy Lombardo
0478240240
kathy@atrealty.com.au
www.atrealty.com.au



(NOT IN POSITION)



9/26 George St, Liverpool NSW 2170

Whilst every attempt has been made to ensure the accuracy of the floor plan contained here, measurements of doors, windows, room and any other items are approximate and no responsibility is taken for any error, omission or mis-statement. This plan is for illustration purpose only and should be used as such by any prospective purchaser. The services, systems and appliances shown have not been tested and no guarantee as to their operability or efficiency can be given.

Photos & Floor Plan created by SMT Clicks | 0478 099 674



Disclaimer: Please note this floor plan is for marketing purposes and is to be used as a guide only. All dimensions are estimates only and may not be exact measurements.