



SOLD

EXCELLENT FAMILY LOCATION CLOSE TO SCHOOLS

This near new home is positioned on a 630sqm block. Perfect for the modern family this stunning home ticks all the boxes. Walk to schools down Parkside drive or take a shortcut using one of the connected pedestrian pathways.

Picture your self-sitting out the back under the covered entertaining area enjoying a nice cup of coffee in the morning or a cool drink after work while looking at the greenery behind you, not many homes in this estate can offer you this freedom.

From the moment you step inside into the wide tiled entry and hallway, and through to the impressive kitchen which features stone bench-tops, ceramic cook-top, stainless steel oven and range-hood, dishwasher, and a generous pantry.

Modern homes on this block size do not come along often, for further details or to arrange an inspection contact John Bradstreet from Polley's realty & Consulting today.

Features of the home include:

- * Master Bedroom with walk-in-wardrobe and en-suite boasting extra-large vanity and shower
- * Another 3 bedrooms with stainless steel ceiling fans and sliding built-in-wardrobes with mirror
- * Reverse cycle air-conditioning to the master bedroom and living area
- * Easy to use roller blinds to all windows
- * Separate extra living area/media room/home office
- * Spacious modern kitchen with island bench & plenty of storage
- * Perfect sized covered outdoor entertaining area with power point
- * Large backyard perfect for the kids or dogs to play safely
- * Rear fencing that allows you to appreciate the greenery of the trees behind you
- * Colorbond roof and cement rendered exterior for long lasting maintenance
- * Double automatic garage
- * LED lighting throughout "saves you \$\$\$ on power bills"
- * Possible side access to the backyard
- * Easy to maintain lawns and gardens

Surrounded by parklands and located within walking distance of Flagstone State School and

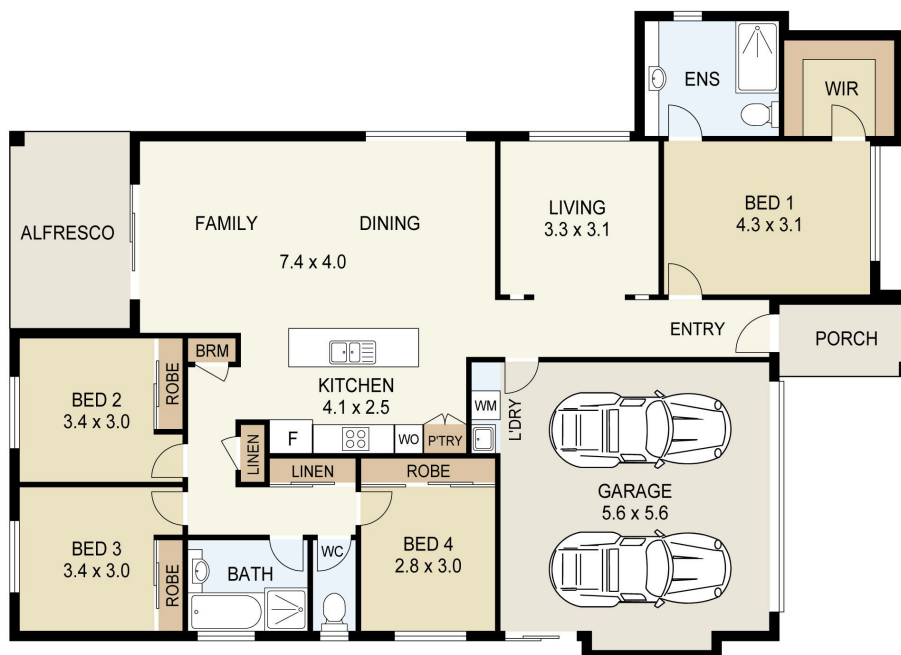
4 BED | 2 BATH | 2 CAR

PRICE:
\$405,000

OPEN FOR INSPECTION:
N/A



Nicole Polley
0450578811
polley@atrealty.com.au
www.atrealty.com.au



Floor Plan



SCALE UNIT IS IN METRES

All measurements are approximate and for illustration purposes only. It should not be considered 100% accurate. Interested parties should rely on their own enquiries.

INTERNAL : 169m²
EXTERNAL : 14m²



Disclaimer: Please note this floor plan is for marketing purposes and is to be used as a guide only. All dimensions are estimates only and may not be exact measurements.