



**SOLD**

## TIMELESS TOWNHOUSE IN LEAFY STREETS OF MEADOWBROOK

Perfectly nestled into the heart of Loganlea, this Meadowbrook townhouse offers an airy and modern aesthetic, while providing easy and near-immediate access to local education and amenities. For those living with or expecting students, this home is the perfect opportunity for painless commutes.

Inside, this townhouse immediately establishes a welcoming and modern atmosphere. The combined dining and living area is well-lit and inviting, with an open-plan modern kitchen occupying one end of the space. This kitchen boasts a wealth of storage space supplemented by a floor-to-ceiling pantry, with a dedicated space for a double fridge. The second storey of the unit boasts a pair of bedrooms and the master suite, with each of the two bedrooms sporting an inbuilt wardrobe to maximise available storage space. The air-conditioned master suite includes an ensuite bathroom with an oversized shower, as well as a private balcony overlooking the leafy streets of Meadowbrook.

The position of this townhouse ensures easy access to all the surrounding amenities of Logan and Brisbane beyond. For education options, this home shares a road with the Griffith University Logan Campus, guaranteeing a painless commute for tertiary education. For younger students, both the Logan Reserve State School and Loganlea State High School are less than a ten-minute drive from the property. The Meadowbrook Shopping Centre is a short three-minute drive away to fulfil your retail needs, and the Logan Hospital is just across the road making for an easy drive to work.

- Timeless townhouse on a hedged corner lot
- Includes covered rear patio with gardens
- Private balconies for master suite and bedroom
- Air-conditioned living spaces and master suite
- Near-immediate access to local Griffith campus
- Four minutes to local TAFE campus
- Primary and secondary education within ten minutes
- Local shopping centre less than five minutes away

**3 BED | 2 BATH | 1 CAR**

**PRICE:**  
\$368,000

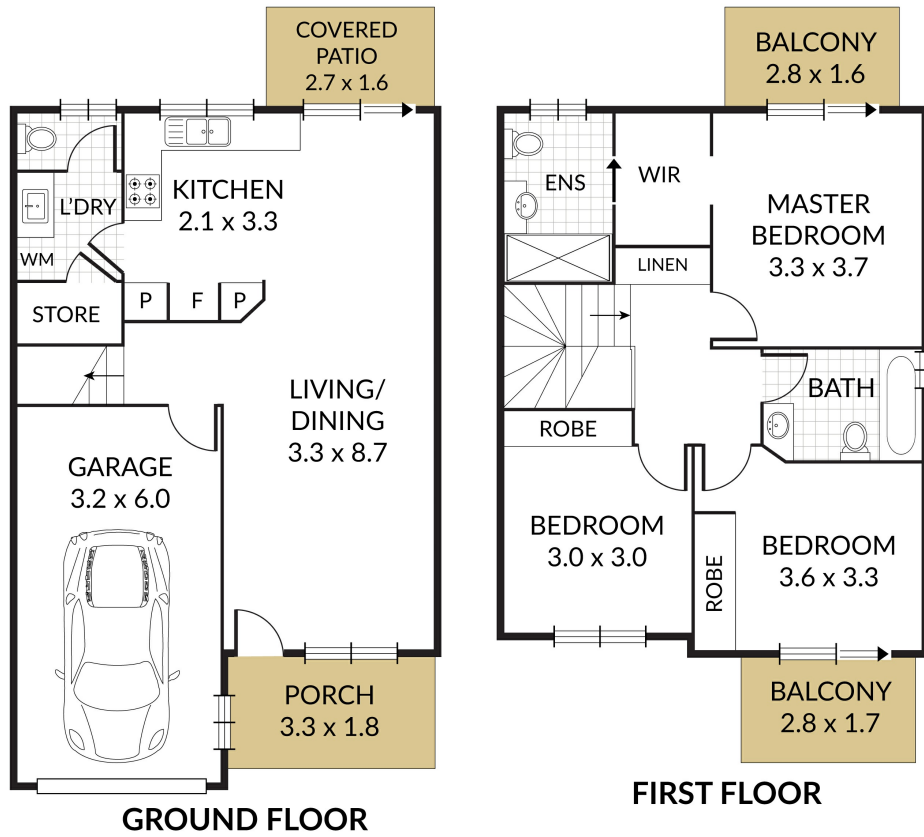
**OPEN FOR INSPECTION:**  
N/A



**Nicole Polley**  
**0450578811**  
polley@atrealty.com.au  
[www.atrealty.com.au](http://www.atrealty.com.au)



3 x 2 x 1 x



NOTE: Every precaution has been taken to verify the accuracy of the above details. However, prospective purchasers are advised to make their own enquiries.



Disclaimer: Please note this floor plan is for marketing purposes and is to be used as a guide only. All dimensions are estimates only and may not be exact measurements.