



SOLD

EXCLUSIVE “MARINA PIER”, 4TH LEVEL, 2 BEDROOMS, 2 CARPARKS, NORTH-EAST VIEWS OF BEACH, MARINA, CITY AND HILLS

Located in this most sought after, and tightly held, apartment complex, this bright and immaculate apartment is perfectly elevated to enjoy the glorious view, and just a moment away from the golden sands of Glenelg beach and the vibrant Marina Precinct.

The view from the apartment is just sensational. Look to the North and it's the sand and the sea, look to the East and it's the city and the hills. Look below and it's beautiful calm waters and the comings and goings of boats and birds and people.

The floorplan consists of 2 bedrooms (both with built-in robes), stunning kitchen with marble benchtops and stainless steel appliances, long and spacious dining and living room, large bathroom with a nice deep bath and separate shower, and a 2nd toilet.

Accessed from the living room and the main bedroom is a balcony, but better described as an outdoor entertaining area. It's the perfect place to start the day watching the sun come up or to show off your view whilst wining and dining with your family and friends.

On a lower level, you have your own 2 car space, within a secure residents' carpark.

The apartment is very well appointed and beautifully presented, and is complete with reverse cycle air-conditioning, secure entry to the building and a video intercom system to welcome your guests.

Marina Pier enjoys a unique marina lifestyle with its abundance of cafes, restaurants and the beach below, together with being just a stroll from Jetty Road, with everything on offer there.

These apartments come up for sale rarely, so be quick to secure this one!

Council Rates: \$1,725 per annum
SA Water Rates: \$ 206.21 per quarter
Strata Maintenance Fund: \$1,635 per quarter

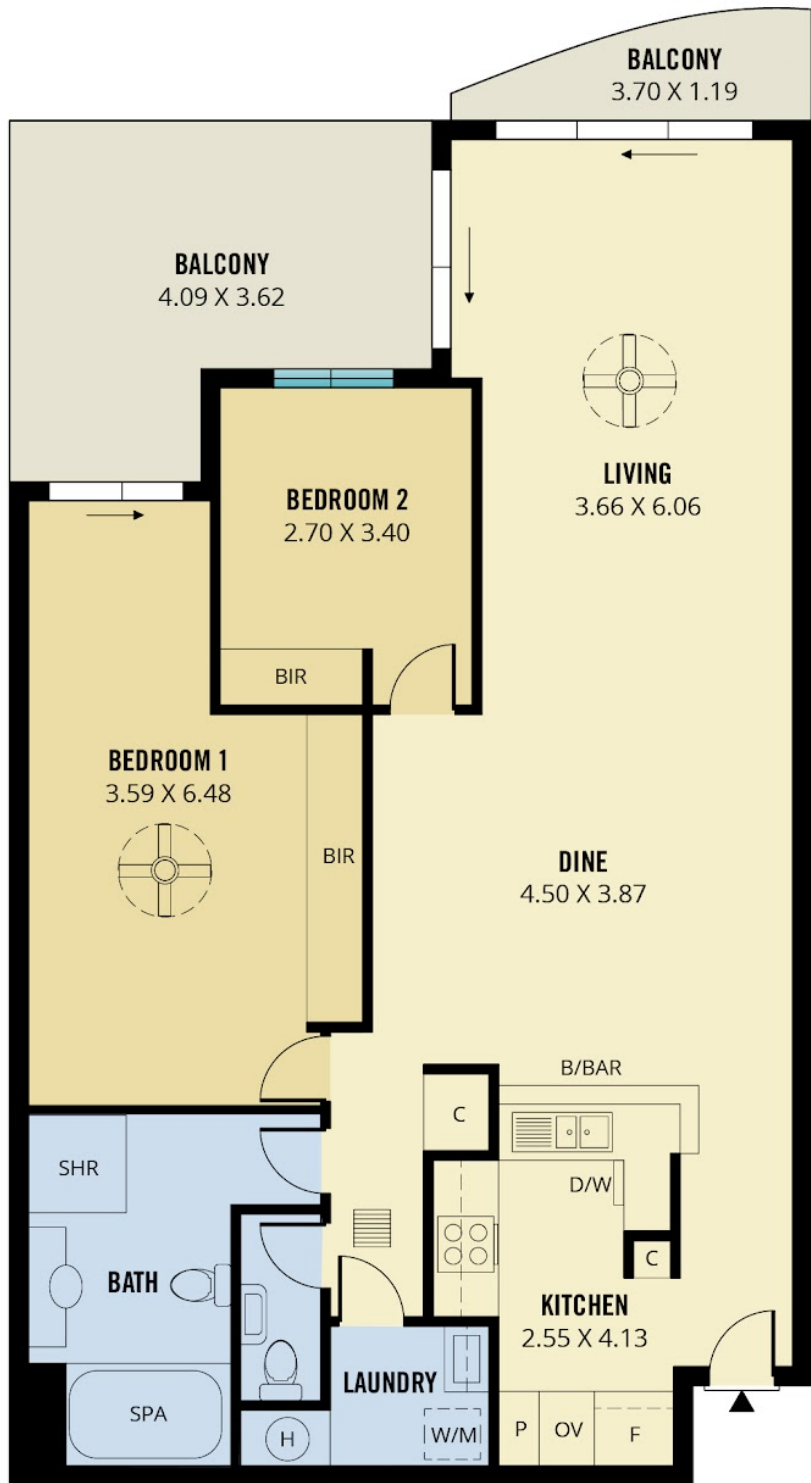
2 BED | 1 BATH | 2 CAR

PRICE:
\$1,405,000

OPEN FOR INSPECTION:
N/A



Simon Tait
0419853945
simon@taitre.com.au
taitre.com.au
RLA: 269823



128m²

TOTAL

110m²

Living

18m²

Balcony



Scale in metres. This drawing is for illustration purposes only. All measurements are

Disclaimer: Please note this floor plan is for marketing purposes and is to be used as a guide only. All dimensions are estimates only and may not be exact measurements.

Simon Tait
0419853945
 simon@taitre.com.au
 taitre.com.au

