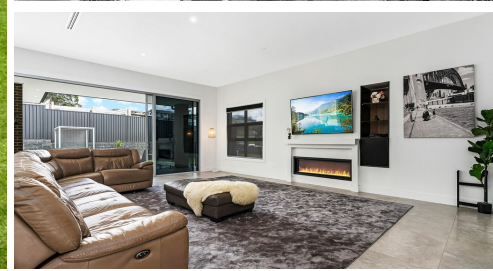


58 MOUNT OLYMPUS STREET, BARDIA, NSW, 2565



FOR SALE

MULTIPLE DWELLINGS ON 2.51 ACRES

Welcome to 58 Mount Olympus St, Bardia. An exquisitely presented multi dwelling residence sitting high and proud on its expansive 2.51 acre parcel of land capturing tantalizing views of the generous frontage that makes up your private oasis all situated in a quiet cul-de-sac location. Boasting a double storey, seven bedroom executive residence, a separate four bedroom family home that is catered to those looking to grow their financial portfolio and a quaint two bedroom retreat, all superior in their impeccable design.

Your family will thrive being provided with an abundance of space that has been cleverly maximised to ensure comfort and practicality are achieved at the highest level. From the vibrant contemporary interiors that carry you effortlessly from room to room across the impressive floor plan to the quality of inclusions that cater to all of your modern comforts, ensures your lifestyle will be greatly enhanced.

Features:

- Front porch offers sweeping views of the lush green surrounds
- Wide open entry foyer with high ceilings
- Boasting 7 generously proportioned bedrooms
- The superior master suite features access to a private verandah & is equipped with an oversized walk in robe & a modern ensuite with a bathtub, floor to ceiling tiling, twin rainfall showerheads & marble top vanity
- Expansive open plan family & dining room that fills with natural light
- Built in cozy fireplace to keep you warm on those cold winter nights
- Flawlessly designed modern kitchen overlooks the open plan living areas
- Generous 100mm thick marble top waterfall island breakfast bench
- Ample amount of slow close shaker cabinetry
- Quality appliances including twin Bosch ovens, 900mm cooktop & dishwasher
- Integrated trash drawer
- Butlers pantry equipped with further storage options
- Bright & airy main bathroom with the same contemporary design as the ensuite
- Versatile alfresco entertaining area suitable for multiple entertaining options
- Built in BBQ kitchen equipped with a mini bar
- Immerse yourself in the in-ground spa for total relaxation
- Private backyard with ample space
- Oversized doors throughout
- Ducted air conditioning

13 BED | 7 BATH | 8 CAR

PRICE:

Expression of Interest

OPEN FOR INSPECTION:

N/A

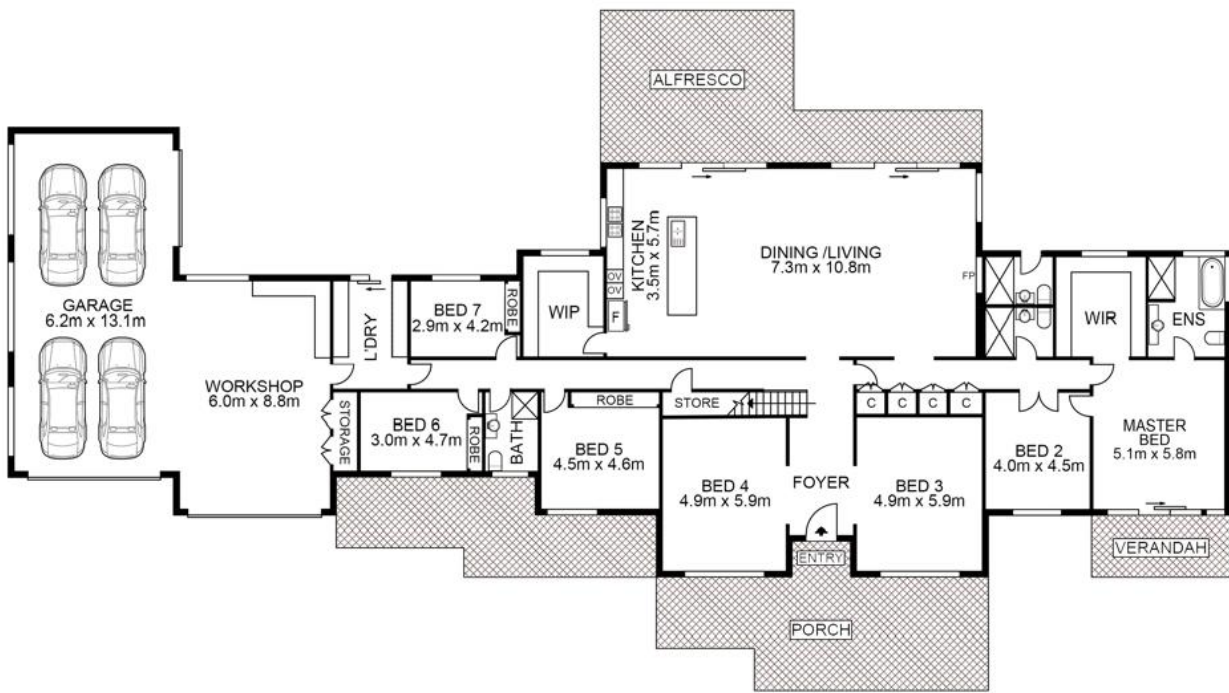


Huss Al Salemi

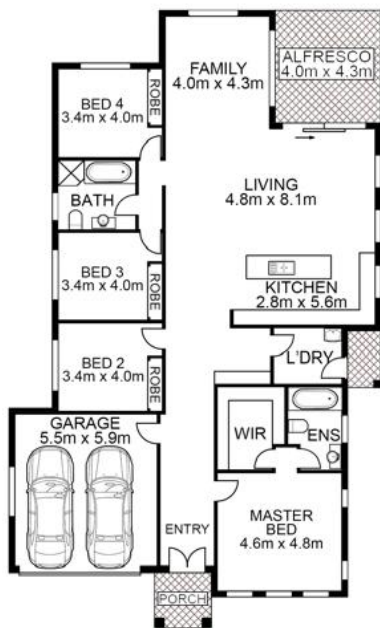
0411699419

huss@atrealty.com.au

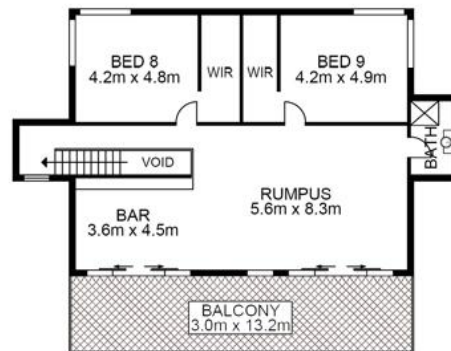
www.agencycentral.com.au



ENTRY LEVEL



2ND DWELLING



UPPER LEVEL