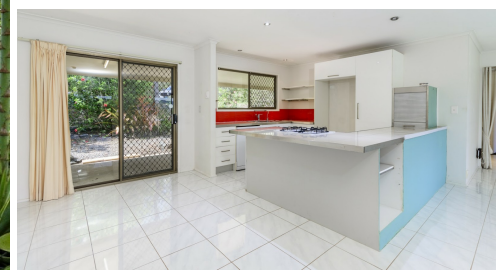


149 MOUNT BEERWAH ROAD, GLASS HOUSE MOUNTAINS, QLD, 4518



FOR LEASE

PRIVATE 3 BED, 2 BATH HOUSE IN GLASS HOUSE MOUNTAINS

GRAY Property Services would like to welcome you to your own piece of paradise nestled in the serene and picturesque Glass House Mountains of Queensland, Australia.

3 bedroom + study low set home. The master bedroom has an ensuite with built-in robe, situated at one end of the home, with the other 2 bedrooms no wardrobes and study separated by a large open plan living area, including a well equipped kitchen with gas cooktop & dishwasher.

With no neighbours in sight you can enjoy the vista from the full length covered verandah at the front, or the large screened verandah at the rear soaking up those great Mountain views. Car accommodation consists of a single carport and a large 14m x 8m colourbond garage with power.

Eco features include 2 x 5000gallon water tanks, gas cooking, all on a fully fenced block only six minutes to local amenities with school bus at the front gate.

- Total privacy with stunning Mountain Views
- 14m x 8m colourbond shed
- Large verandahs front & rear
- 6 minutes to Schools, shops & rail.

TO INSPECT OR APPLY:

To apply for this property please copy and paste the this link
<https://app.snug.com/apply/graypropertyservices>

We do NOT accept 1Form, Ignite, 2Apply or any other online type of tenancy application form. You must apply using the the provided application link sent to you once you enquire.

It is an agency and owner policy that each person over the age of 18yrs old wishing to live at the property is required to apply and provide identification and supporting documents.

To inspect this property, you will be required to provide the agent onsite with your name, best

3 BED | 2 BATH | 6 CAR

PRICE:
\$720 per week

OPEN FOR INSPECTION:
N/A



Cassandra and Cameron Gray
0431316679

cgray@atrealty.com.au
www.atrealty.com.au