



SOLD

IDEAL FAMILY HOME OR INVESTMENT

Situated in the highly popular, family friendly suburb, this well-presented double storey brick residence encompasses two levels of generous living. The residence features a spacious living/dining area with reverse cycle air conditioner, modern bathroom boasting a generously sized walk-in shower and a luxurious bathtub, the kitchen is well appointed with dishwasher, ample cupboard and bench space. This area seamlessly extends onto a spacious deck, offering views of the fully fenced, child and pet-friendly backyard.

Presenting an exceptional investment prospect or an ideal family home, the residence encompasses three bedrooms on the upper level, complemented by a spacious fourth self-contained room downstairs. Perfectly suited for dual living arrangements or as a teenager's retreat, this versatile space previously served as a family daycare centre, showcasing its future potential and adaptability to various needs. Additionally, the lower level comprises a double lockup garage, complete with a workbench, generously proportioned laundry area complete with a convenient second shower and toilet.

Perfect for the young family, this home is situated close to schools, sports clubs, shopping centres and parks. Avoid disappointment, this one won't last
Contact Chris Williams on 0428 333 447

4 BED | 2 BATH | 2 CAR

PRICE:
\$680,000

OPEN FOR INSPECTION:
N/A

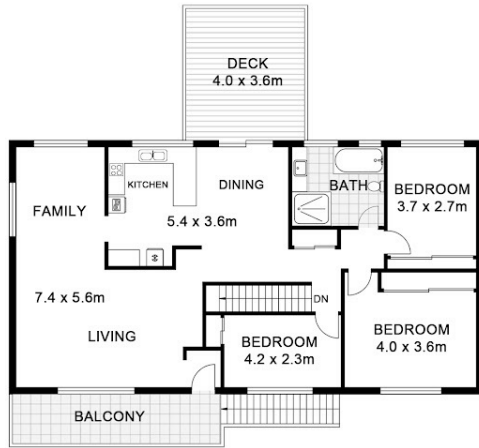


Chris Williams
0428333447
chrisw@atrealty.com.au
www.atrealty.com.au

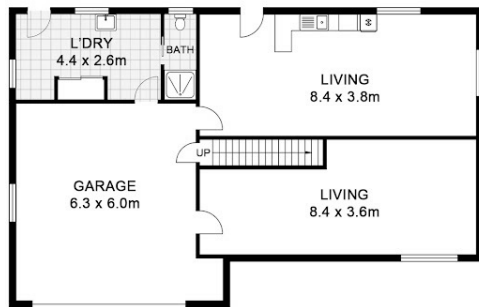
17 Pindari Crescent, Goonellabah



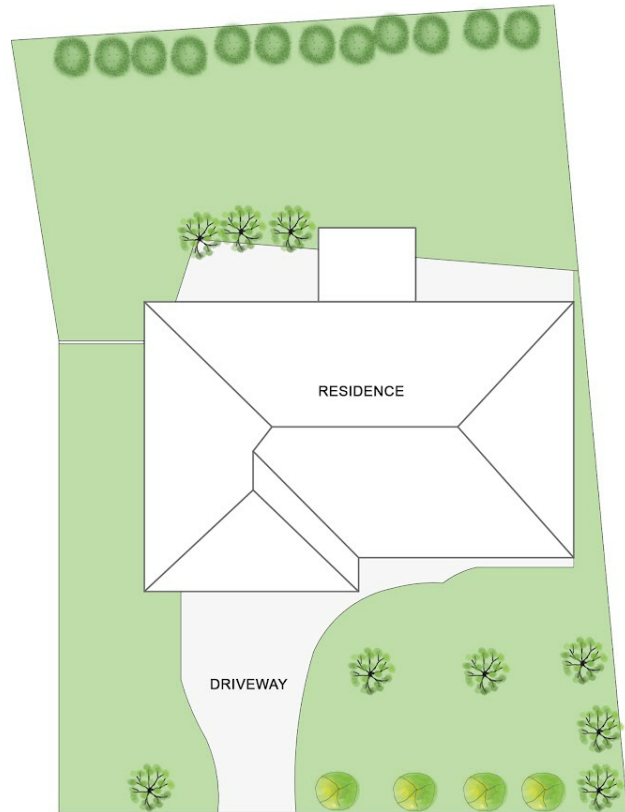
APPROXIMATE AREAS
INTERNAL: 207m²
EXTERNAL: 24m²



UPPER LEVEL



LOWER LEVEL



SITE PLAN
(NOT TO SCALE)

Disclaimer: Please note this floor plan is for marketing purposes and is to be used as a guide only. All dimensions are estimates only and may not be exact measurements.