

7 GARIE CLOSE, WOODBINE, NSW, 2560



# FOR SALE

## ENTERTAINER'S PARADISE ON 1,388SQM BLOCK IN A QUIET CUL-DE-SAC LOCATION

Welcome to 7 Garie Cl, Woodbine. Sitting proudly on an expansive 1,388sqm block of land that is accompanied by an impressive floorplan, it offers an ideal haven your family will thrive in. Designed with endless summer nights in mind it is equipped with the ultimate entertaining spaces along with an in ground salt water swimming pool.

Other features of this home include;

- Four generously proportioned bedrooms with built in robes to all
- Master bedroom is double in sized with walk in robe & ensuite
- Multiple living spaces throughout including formal Lounge & dining as well as family & meals room
- Recently renovated, flawlessly designed Kitchen with ample storage options
- Stone waterfall benchtops
- Stainless steel appliances including integrated microwave, oven & a dishwasher
- Gas cooking
- Pantry
- Island bench that serves as a breakfast bar
- Expansive bright & airy main bathroom equipped with corner bath
- Ducted air conditioning
- Alarm
- Generously sized undercover entertaining area
- Salt water inground pool with cover
- Paved alfresco areas including pool courtyard
- Fully enclosed backyard with plenty of yard space
- Third bathroom equipped with a shower, perfect for after pool activities
- 9 x 6m Double garage equipped with a fully functional kitchen with air conditioning & access to backyard
- 9 x 6m separate double garage
- Triple carport
- Double sized garden shed
- Solar Panel system
- High side of the street
- Cul-de-sac location

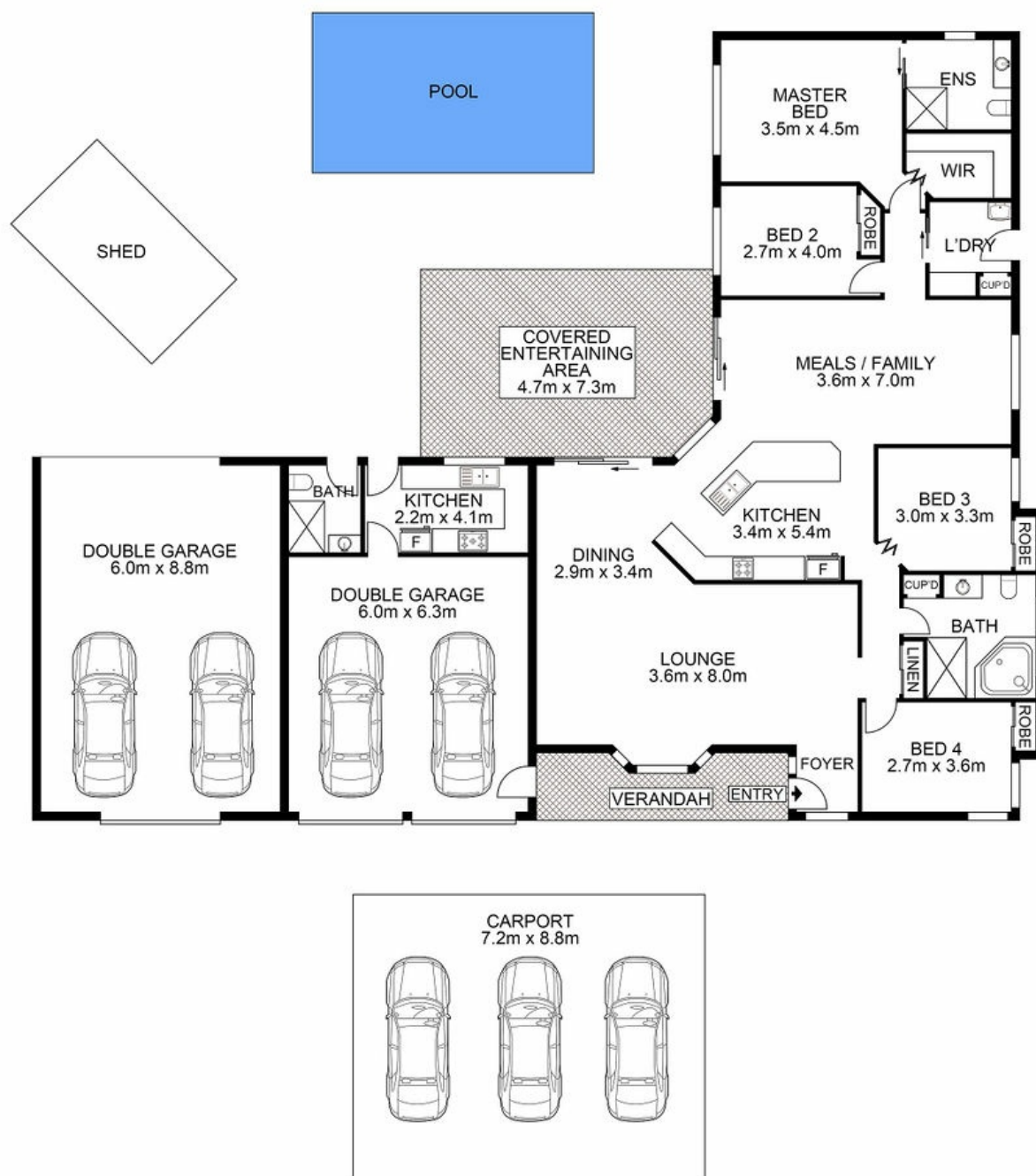
4 BED | 3 BATH | 7 CAR

PRICE:  
Just Listed

OPEN FOR INSPECTION:  
N/A



**Huss Al Salemi**  
**0411699419**  
huss@atrealty.com.au  
[www.agencycentral.com.au](http://www.agencycentral.com.au)



**AGENCY**

Disclaimer: Please note this floor plan is for marketing purposes and is to be used as a guide only. All dimensions are estimates only and may not be exact measurements.

**7 Garie Close, Woodbine**

Huss Al Salemi • All measurements are approximate • Drawn for marketing purposes only

0411699419

huss@atrealty.com.au

[www.agencycentral.com.au](http://www.agencycentral.com.au)

