

**SOLD**

## THE WONDERFUL HOME IS UNDER CONTRACT

With a brilliant layout and central position, Number 7 - City One is perfect for those wanting style, position and space.

Conveniently located within walking distance to:

- Sunshine Plaza
- Homemaker Centre
- Ocean Street for Restaurants and Cafe's
- Maroochydore River
- Maroochydore CBD

This recently built Townhouse exudes luxury, style and elegance. The sophisticated architectural design incorporates high quality fixtures and finishes throughout, combined with extra ceiling height and air conditioning to promote a relaxed coastal lifestyle.

Nicely positioned in a small, boutique complex of Seven Townhouses Features include.

- Sleek kitchen with Stone benchtops, marble splashbacks & Bosch appliances.
- Large open plan dining and living areas
- Alfresco dining and entertainment area
- Two spacious bedrooms One downstairs & One upstairs
- Two well designed bathrooms which serve as ensuites for each bedroom
- Powder room servicing the main living area
- Built in robes throughout
- Private landscaped garden and rear deck on lower level
- Secure private, remote controlled two car garage

With a low Body Corp of Approx \$2000 per annum and a potential rental return of Approx \$650 Per Week. This is a must to inspect.

Disclaimer:

All information contained is gathered from relevant third party sources. We cannot guarantee or give any warranty about the information provided. Interested parties must rely solely on their own enquiries.

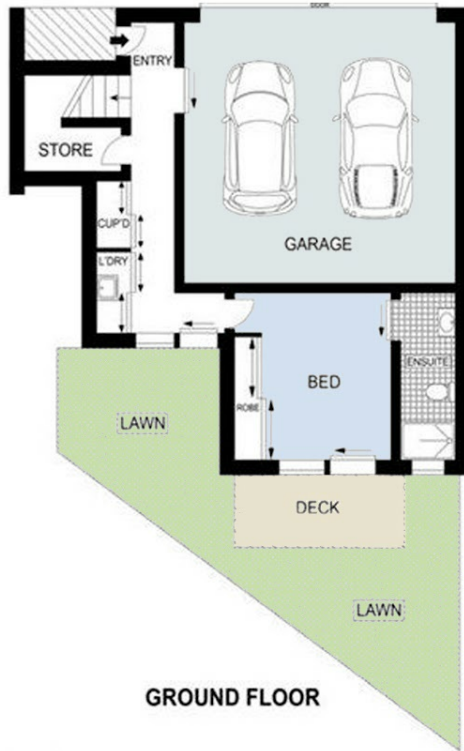
**2 BED | 3 BATH | 2 CAR**

**PRICE:**  
**\$750,000**

**OPEN FOR INSPECTION:**  
**N/A**



**Julian McMillan**  
**0406700079**  
julian@atrealty.com.au  
[www.atrealty.com.au](http://www.atrealty.com.au)



7/1 Tolman Court, Maroochydore

2 Bed 2 Bath 2 Car



Int: 136 m2  
Ext: 57 m2

Scale in metres. Indicative only. Dimensions are approximate. All information contained herein is gathered from sources we believe to be reliable. However, we cannot guarantee its accuracy and interested persons should rely on their own enquiries.

Disclaimer: Please note this floor plan is for marketing purposes and is to be used as a guide only. All dimensions are estimates only and may not be exact measurements.

Julian McMillan  
0406700079  
julian@atrealty.com.au  
www.atrealty.com.au

