



FOR SALE

CHARMING HOME BY THE WERRIBEE RIVER WALKING TRAIL

Located in the heart of Central Werribee, this charming unit offers the perfect opportunity for first home buyers, investors, and downsizers alike. Nestled in a peaceful and highly desirable neighbourhood, this property boasts a bright and spacious living area that radiates warmth and comfort.

Step inside to discover an expansive living space filled with natural light, creating a welcoming atmosphere. The well-appointed kitchen, complete with ample storage and modern appliances, seamlessly adjoins the open-plan meals area. The unit comprises two generously sized bedrooms, each featuring built-in robes.

The interior of this home is designed to cater to your every need, with thoughtful touches that enhance everyday living. The large living area is perfect for entertaining, while the bedrooms offer a peaceful haven for unwinding after a long day. This unit also features a full-sized laundry, adding to the overall convenience and functionality of the home.

Outside, you'll find a well-maintained and low-maintenance outdoor space, ideal for relaxing and enjoying the fresh air. The beautiful Werribee River walking trail is just footsteps away, providing a picturesque setting for morning walks or evening strolls.

Situated next to Manorvale Primary School and near St Andrews Catholic Primary School, this unit offers excellent educational opportunities for families. Presidents Park is also nearby, offering plenty of outdoor recreation options for all ages. Additionally, you'll find an array of local amenities, including shops, parks, and bus stops, all within easy reach.

Whether you're taking the first step on the property ladder, looking to expand your investment portfolio, or seeking a downsized living space, this delightful unit in Central Werribee ticks all the boxes. Don't miss out on the chance to secure this fantastic property – call to arrange your inspection today!

2 BED | 1 BATH | 1 CAR

PRICE:

\$390,000 - \$420,000

OPEN FOR INSPECTION:

N/A



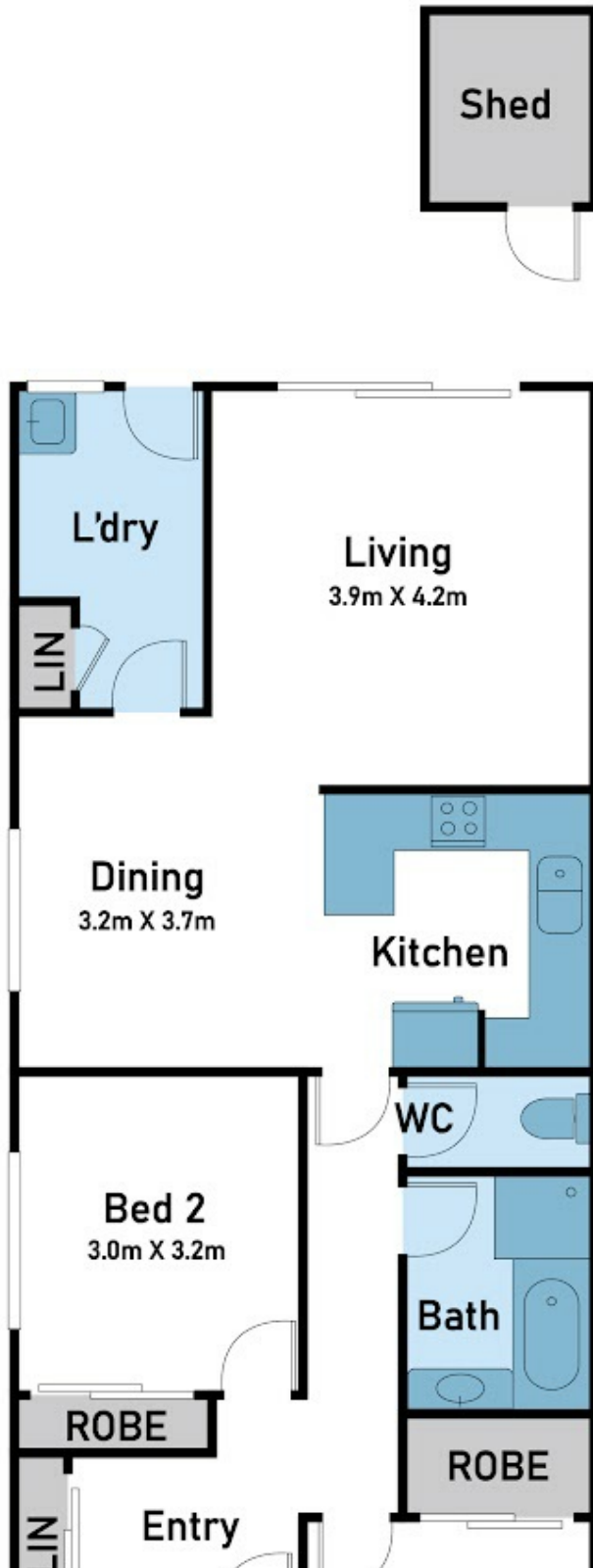
Samuel Hogan

0401315234

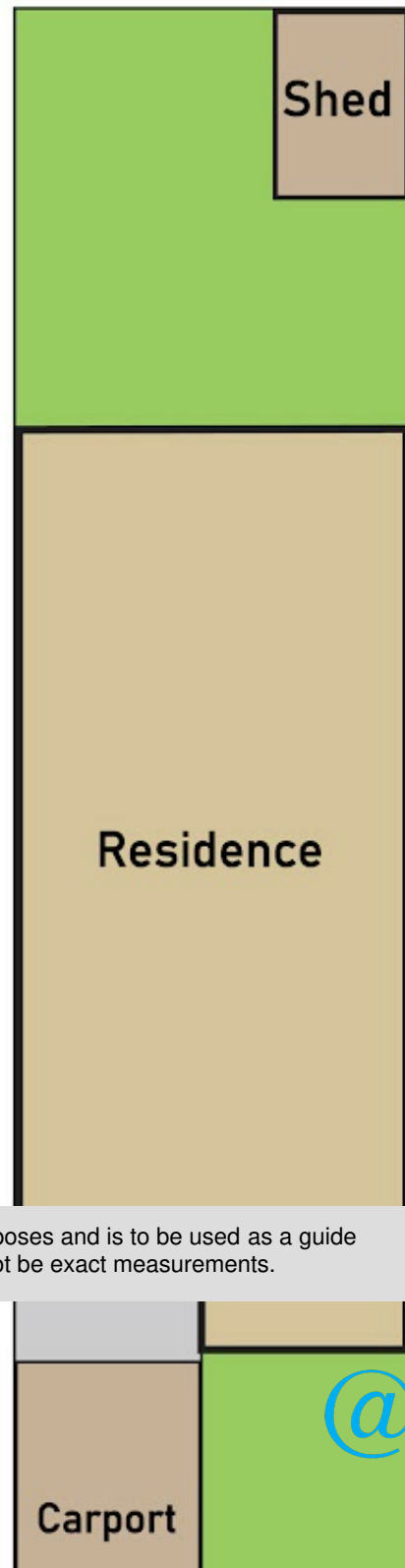
samuel@atrealty.com.au

www.atrealty.com.au

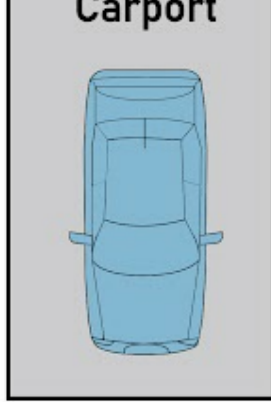
Floor Plan



Site Plan



Disclaimer: Please note this floor plan is for marketing purposes and is to be used as a guide only. All dimensions are estimates only and may not be exact measurements.



@realty

1/14 Outlook Drive, Werribee

* Dimensions are approximate and for illustrative purposes only