



FOR SALE

A DREAM WITHIN REACH.

It's not every day an affordable lifestyle block this size comes to market so I'm excited to present you with this incredibly well located, versatile 'all rounder'!

THE HOME

A perfect fit for the country, the house enjoys a bright, sunny northerly aspect & has been modernised & updated in key areas. It has three bedrooms, one bathroom plus a second w/c, spacious open plan living with a wood burner & wetback - and a large wraparound verandah providing a pleasant weatherproof area to take in soothing views of the gently rolling landscape. Comfortable & functional - it will be easy to see your family here!

THE GROUNDS & FACILITIES

. A touch over 10 acres (4.09ha more or less) of gorgeous land with gentle to slightly rolling contour. 14 paddocks - most have animal shelters and 12 have gravity fed troughs. And there is electric fencing throughout the property as well.

- . Two stables (possibly a third), a tack room, pens, a crush & ramp & chicken coop.
- . A big shed with a concrete floor, high stud, mezzanine storage, mechanics pit & a toilet/washroom.
- . A spacious sleepout (circa 54sqm) - insulated & with power.
- . Two water tanks - one for the house, one for the troughs.
- . Two driveways.

Plus a variety of other small outbuildings..

THE LOCATION

A fabulously handy location, between 9 and 11kms from Kumeu, Riverhead & Waimauku shops & only a few doors up from the Strip Rd entrance to Riverhead Forest - ride your horse, walk

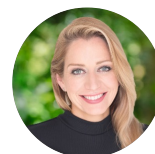
3 BED | 1 BATH | 0 CAR

PRICE:

Asking price \$1,549,000

OPEN FOR INSPECTION:

N/A

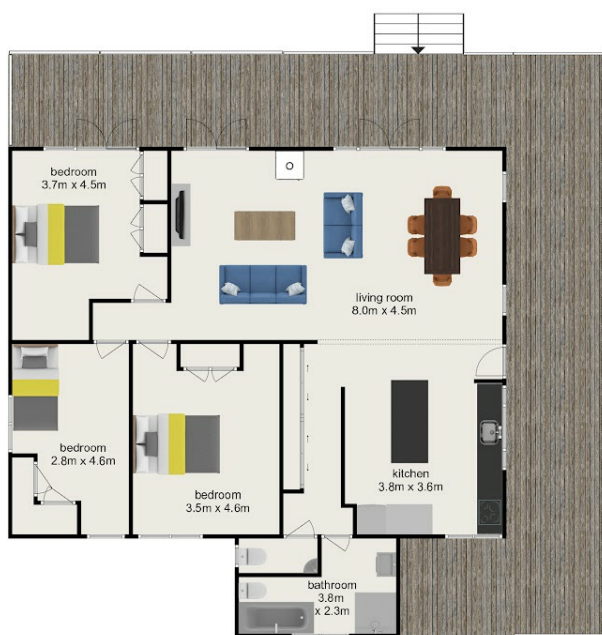


Maria Santayana

021454694

m.santayana@realty.co.nz

www.atrealty.co.nz



NORTHTOWEST | **@realty**

Measurements are approximate, this plan is for illustrative purposes only and is not an exact representation of the property

Disclaimer: Please note this floor plan is for marketing purposes and is to be used as a guide only. All dimensions are estimates only and may not be exact measurements.