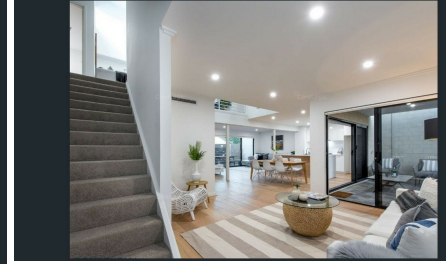


34C BIRDWOOD STREET, INNALOO, WA, 6018



SOLD

DELUXE URBAN TOWNHOUSE

Introducing designer designed spacious two-storey townhouses brought to you by Santelli Building Co, offering superb living in a great location with no strata fees. Low maintenance townhouse, contemporary in design and ideally located, with light-filled open-plan spaces, two separate living areas, courtyard for entertaining, custom design kitchen and seamless indoor/outdoor living compliments of glass stacking doors.

Townhouse 34C: 233sqm

Featuring:

- Modern design two-storey homes in a complex of three with landscaped gardens
- Alfresco living; dual courtyards
- Kitchen featuring stone benchtops, Bosch oven, dishwasher, Delonghi gas cooktop
- Four generous bedrooms with wooden cabinetry wardrobes
- Master bedroom contains designer wardrobes, ensuite with free-standing bath
- Two bathrooms with full height tiling, spacious shower and quality fixtures
- Zoned ducted heating and cooling; security alarm system
- Secure double garage with storage; laundry with separate water closet
- No Strata fees

Local Area Highlights:

- Birralee Park and Yuluma Oval
- St Dominics and Yuluma Primary School
- The Saint George Hotel
- Stirling Train Station
- Westfield Innaloo (Stirling)
- Karrinyup Shopping Centre
- Scarborough foreshore

"Make it happen" & contact Brian Murray today: 0414 802 541.

4 BED | 2 BATH | 0 CAR

PRICE:
\$800,000

OPEN FOR INSPECTION:
N/A



Brian Murray
0414802541
thinc@atrealty.com.au
www.thincatrealty.com