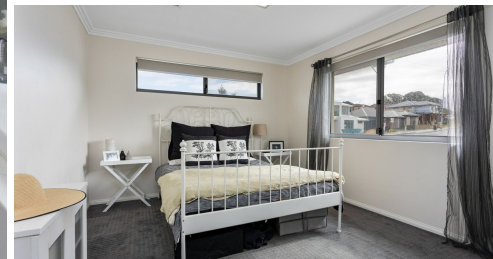


221 ROYAL STREET, YOKINE, WA, 6060



SOLD

UNDER OFFER!

This luxurious custom built home by award winning builder In-Vogue Homes, provides a low maintenance easy care opportunity to enjoy the finer things in life.

Everything about this home is generous, with multiple living areas, large bedrooms, and seamless integration from the internal living through to the outdoor entertaining area with landscaped reticulated gardens. A home that provides wonderful space for the family, whilst serving perfectly as a lock and leave; this is a home that will be popular amongst many.

PROPERTY FEATURES:

- â€¢ Large 3 bedrooms (spacious master with 2 oversized minor bedrooms), 2 bathrooms and 3 wc.
- â€¢ The spacious master room and second bedroom includes a walk-in robe, whilst the other bedroom include a built-in robe.
- â€¢ Two bedrooms upstairs with a separate living area
- â€¢ Upstairs you will be greeted with an open plan living that flows from the breezy balcony through to the living area
- â€¢ Two living areas
- â€¢ Theatre room
- â€¢ Study that can be converted into a 4th bedroom
- â€¢ The modern kitchen is fully equipped with quality appliances
- â€¢ A balcony with views that look out to the city skyline, and the hills. That will make all your guest scream with envy whilst entertaining.
- â€¢ Large, double sized entry door and wide single flights staircase for easy access to the upstairs area.
- â€¢ 350 sqm Green Title block

LOCATION FEATURES:

- â€¢ Close to The West Australian Golf Club (approximately 2 min walk away) and 5 min drive from the Mt Lawley Golf course.
- â€¢ Approximately 5 min drive away from YOKINE Reserve, Dianella Open Space, Terry Tyzack Aquatic Centre, Edith Cowan University (Mt Lawley Campus), WAAPA, Yokine and Coolbinia Sports Centres as well as Dog Swamp Shopping Centre and Flinders Square.
- â€¢ Approximately 10 min away from the Mt Hawthorn and Mt Lawley Cafe and restaurants strip.

3 BED | 2 BATH | 2 CAR

PRICE:
\$770,000

OPEN FOR INSPECTION:
N/A



Brian Murray
0414802541
thinc@atrealty.com.au
www.thincatrealty.com



Disclaimer: Please note this floor plan is for marketing purposes and is to be used as a guide only. All dimensions are estimates only and may not be exact measurements.