

FOR SALE

CENTRAL YET PRIVATE DUAL LIVING RAINFOREST HIDEAWAY

Escape to your own private oasis on picturesque Tamborine Mountain. This stunning 4 bedroom, 3 bathroom, house + studio is a dream come true for any nature lover or those seeking a peaceful sanctuary. Nestled in the heart of the mountain, only a short walk to Curtis Falls & Rock Pools; Gallery Walk; Main St Village; this home offers the perfect blend of convenience and tranquility.

From the moment you step onto the expansive 1855 square meter property, you will be captivated by the serene surrounds of lush greenery with only the sounds of bird song, and gurgling waters from the bordering creek and waterfalls. As you enter the double storey home, you will find the entry foyer that leads into the spacious and light-filled living area. The high ceilings and large windows create an open and airy atmosphere, perfect for relaxing and entertaining.

The indoor features of this property are nothing short of impressive. The large study provides the perfect space for a home office or quiet reading nook. The built-in wardrobes in the bedrooms offer ample storage space, while the modern bathrooms boast sleek finishes and quality fittings. The kitchen is equipped with a dishwasher and ample bench and storage space. Whether you enjoy hosting dinner parties or simply cooking for your family, the kitchen is ideally located to service the living / dining areas as well as the expansive entertainers deck.

As you make your way outside, you will be greeted by a large balcony and deck, perfect for enjoying your morning coffee while taking in the stunning outlook and spotting the variety of resident bird life and pademelons. The secure parking and double garage provide ample space for your vehicles, including Caravan, while also offering additional storage room. Above the Garage is a private Studio apartment, perfect for guests, with it's own entry to the property.

One of the standout features of this property is its eco-friendly elements, including water tanks and grey water system. Not only will you be able to reduce your environmental impact, but you will also save on water bills.

For those who value comfort and relaxation, this property offers the best of both worlds. The air conditioning and open fireplace make it easy to adjust the temperature to your liking, no matter

4 BED | 4 BATH | 2 CAR

PRICE:

Open to Offers \$1,225,000+

OPEN FOR INSPECTION:

Apr 5 at 12:30pm - 1:00pm

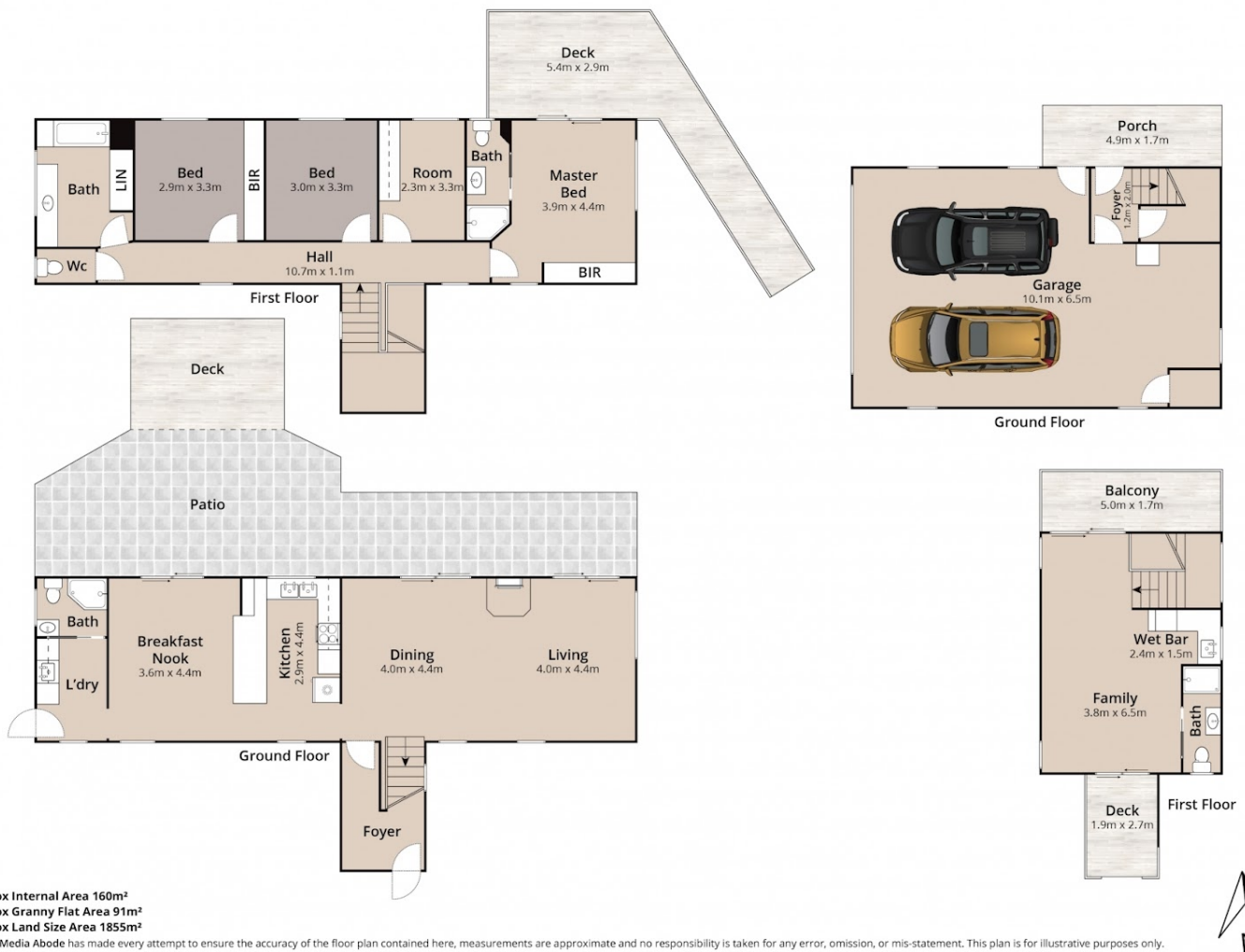


Bernadette Brushe

0407176052

abode@aboderealty.au

www.aboderealty.au



26 Wasatch Court, Tamboorine Mountain

Disclaimer: Please note this floor plan is for marketing purposes and is to be used as a guide only. All dimensions are estimates only and may not be exact measurements.