



SOLD

YOUR DREAM RETREAT AWAITS!

Positioned on a sprawling 2.5-acre parcel of land within a charming semi-rural enclave, mere moments from the vibrant village of Nana Glen, 66 Thoroughbred Close, boasts lifestyle and convenience with a scenic backdrop.

Crafted in 2017, this thoughtfully designed home showcases an expansive open-plan layout, centered around a sleek modern kitchen. Adorned with a generous stone island bench, glass splashback, and gas cooktop, it seamlessly integrates with an inviting light filled lounge and dining area. Step outside to discover an impressive covered entertaining space, offering panoramic views of rolling hills and lush greenery.

The main bedroom retreat is a sanctuary of comfort, featuring an impressive ensuite bathroom, walk-in robe, and direct outdoor access through glass sliding doors. Additionally, a versatile media room provides ample space for family movie nights or can easily convert into a fifth bedroom. Complete with ducted air conditioning throughout the home, year-round comfort is assured.

Accommodation is further enhanced by three well-appointed bedrooms, each boasting built-in robes and plantation shutters, accompanied by a family bathroom and separate toilet. Outside, a sprawling fully fenced backyard awaits, evoking the essence of rural living. Offering effortless maintenance, you will discover a fully stocked dam, ideal for those envisioning a hobby farm on a manageable scale. With a 6.6KW solar system and a 90,000-litre water tank, sustainability meets convenience seamlessly.

To secure your slice of tranquil countryside living, schedule a viewing today and experience the epitome of modern rural lifestyle firsthand.

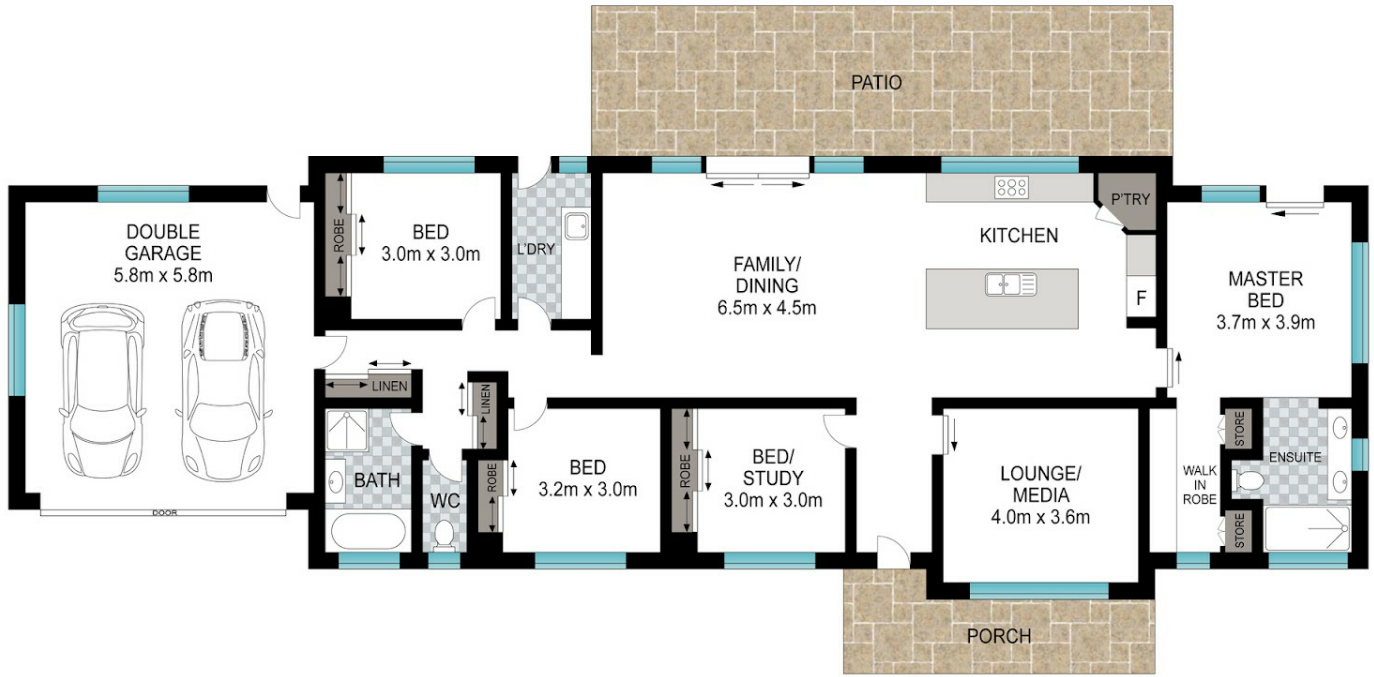
4 BED | 2 BATH | 2 CAR

PRICE:
\$1,048,000

OPEN FOR INSPECTION:
N/A



Bryce Heward
0423691322
bryce.heward@atrealty.com.au
www.atrealty.com.au



66 Thoroughbred Close, Nana Glen



Disclaimer: Please note this floor plan is for marketing purposes and is to be used as a guide only. All dimensions are estimates only and may not be exact measurements.

Bryce Heward
0423691322
 bryce.heward@atrealty.com.au
www.atrealty.com.au

